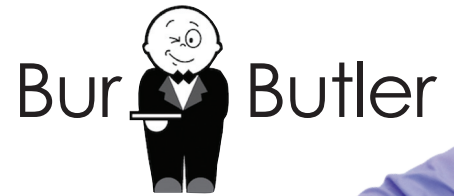
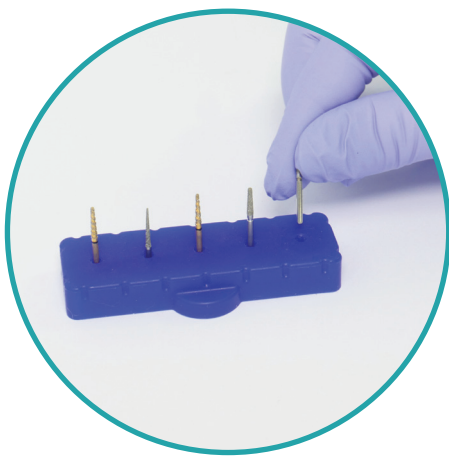
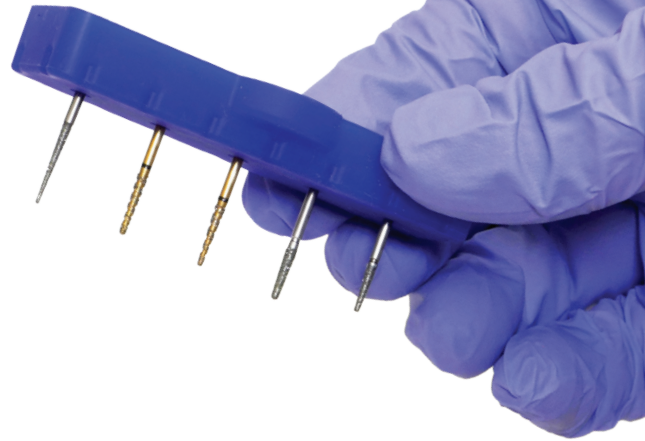


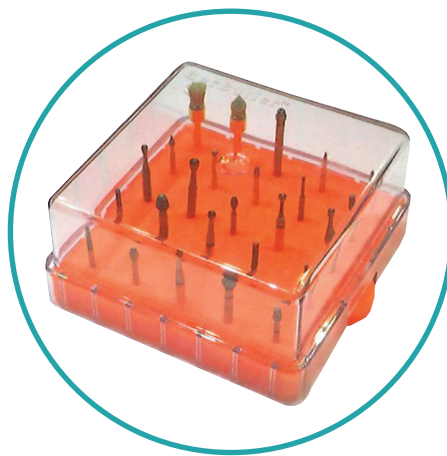
Burs Don't Fall Out, Even When Dropped!



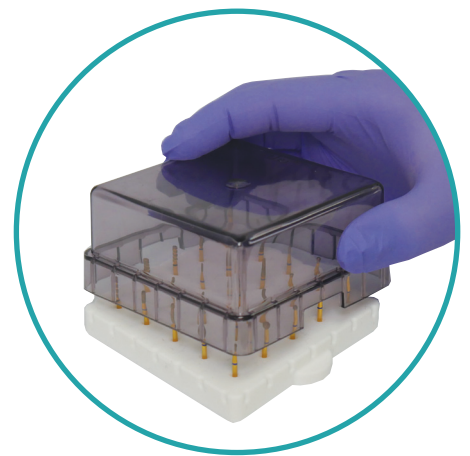
BurButler is a universal dental bur block system designed by dentists for dentists.



No magnets, clever tapered holes lightly but adequately grip the end of the bur.



The contents are clearly visible through the lid.

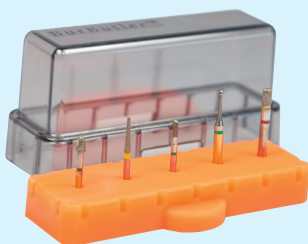


The snug fitting lid goes on & off easily and with one hand.

Available In a Range of Sizes & Colours

You quickly feel that little pressure is needed to safely secure your burs, the same light pressure removes them. A grip so reliable that burs are not dislodged during washing; even in a washer disinfectant!

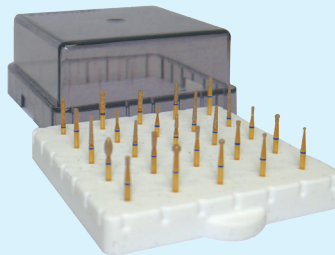
Available in a range of colours: Hot Pink, Orange, Blue, White & Violet.



5 Hole Std Lid



10 Hole Std Lid



25 Hole Std Lid



25 Hole Tall Lid

Call us on:

01274 88 55 44

or visit: www.trycare.co.uk/dental

Trycare

Simple, Durable, Flexible & Elegant in Design

The BurButler keep burs neat & tidy and requires little pressure to safely secure and remove them. The grip is so reliable that they don't dislodge during washing, even in a washer disinfectant or when dropped!



The tapered holes grip at the shank of the bur no matter the diameter and they are made of medical grade silicon. Every bur will grip any hole, allowing you to set up your chosen burs in the order you want them.

BurButlers are suitable for dentists, hygienists and technicians in the dental practice, laboratory or hospital.

With an autoclavable base and lid and the ability to organise any dental burs in any order, you can set up your requirements on your chosen block for your procedure in any mix, colour coded for procedure or clinician.

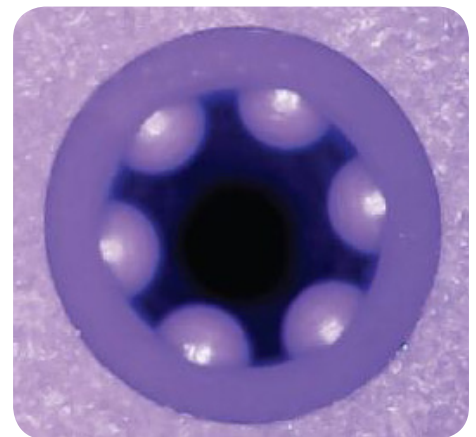
There are no moving parts or hinges to clean and spacing between the burs allows easy handling.

Bacteriologically tested, you can put the loaded tray through the sterilisation cycle, without removing the burs to reduce handling, helping to save time and stay organised.

The process of cross infection prevention includes washer-disinfectant, ultrasonic cleaner, steam autoclaving.

The BurButler microbial assessment proves the efficacy of the cross infection control with a BurButler fully loaded with dental burs still in situ.

The BurButler has no removable "bungs" which give rise to surfaces hidden to washer-disinfectant irrigation and provide a haven for microbial debris.



For more information visit:
www.trycare.co.uk/burbutler

Call us on:

01274 88 55 44

or visit: www.trycare.co.uk/dental

Trycare

CERTIFICATE OF ANALYSIS

Client : Paul Moore
 Gate Dental Services Ltd
 Garrynagry
 Roscahill
 Galway

Report No. : 375306
 Date of Receipt : 02/11/2018
 Start Date of Analysis : 02/11/2018
 Date of Report : 13/11/2018
 Order Number :
 Sample taken by : CLS

Lab No	Sample Description	Test	Ref.	Result
907639	ID: Black, Filamentous, Raised, Filiform, Fuzzy. Ref: 905061. SDA Neat plate. Dentsply Burstand Well 13	Colony morphology	M	Black(Mould), Filamentous, Raised, Filiform, Fuzzy
		Yeast or Mould Identification	S,	Aspergillus niger
907899	ID: Yellow, Circular, Raised, Entire, Shiny. Ref: 905072 (N). Dentsply Burstand Well 22	Api identification 1	M	Micrococcus spp
		Gram Stain Identification 1	M	Positive Cocci
		Colony morphology	M	Yellow, Circular, Raised, Entire, Shiny
907950	ID: Cream, Circular, Raised, Entire, Smooth. Ref:905064 (N). Dentsply Burstand Well 16	Api identification 1	M	Micrococcus spp
		Gram Stain Identification 1	M	Positive Cocci
		Colony morphology	M	Cream, Circular, Raised, Entire, Smooth
907971	ID: Cream, Circular, Flat, Entire, Translucent. Ref: 905072 (N) Dentsply Burstand Well 22	Api identification 1	M	Staphylococcus Hominis
		Gram Stain Identification 1	M	Positive Cocci
		Colony morphology	M	Cream, Circular, Flat, Entire, Translucent
908005	ID: White, Irregular, Raised, Undulate, Rough. Ref: 905067 (N). Dentsply Burstand Well 18	Api identification 1	M	Kocuria Kristinae
		Gram Stain Identification 1	M	Positive Cocci
		Colony morphology	M	White, Irregular, Raised, Undulate, Rough

Prepared by:

ANGELA PURTILL

Approved by:



Angela Purtill
Administrator
13/11/2018

Chryl Coen
Reporting Analyst
13/11/2018

See below for test specifications and accreditation status.

This report only relates to items tested and shall not be reproduced but in full with the permission of CLS.