

ISSUE 03
MARCH 2024

CENTURY +



RESTORATIVE | AESTHETIC | ORAL HYGIENE |
IMPLANT | MOBILE DENTISTRY |
BONE MANAGEMENT

JS
J&S
DAVIS

Small enough to care,
bold enough to lead.

A note from the MD, Daniel Davis

Hello and welcome to the Spring/Summer edition of Century +, which also happens to be the first issue of 2024!

I would be very surprised if you haven't spotted any of our team at events, exhibitions and courses across the country yet this year. It may be that you've seen them, but perhaps not connected them directly to J&S Davis. At some events, our team represent some of our specific brand names, rather than the J&S Davis brand per se. Here lies a good opportunity to recap on the growing brands under the J&S Davis umbrella.

For many years, J&S Davis has been the exclusive distributor in the UK and Ireland for Kuraray – the makers of brands such as Panavia and Clearfil. More recently, the company has taken on the Polydentia range, comprising mainly of innovative, Swiss made matrix systems, to complement the restorative offering.

Meisinger is another brand with whom we have had a long-standing relationship, bringing you not just rotary and Bone Management, but most recently, Meisinger Digital (Milling machine and intra-oral scanner) and Meisinger Implants – known as Oktagon Implants (formerly Dental Ratio).


Of course, J&S Davis is also the UK and Ireland distributor for LM Instruments, renowned for their ergonomic handles, reducing the risk of RSI to the clinician. As well as LM, we have Curasept, bringing you anti-staining chlorhexidine mouthwashes and gels, as well as the new Biosmalto – designed to remineralise and strengthen the enamel.

BPR Swiss is an exciting range of products in the mobile and portable dental field. These products range from portable suction to dental chairs on wheels, to varying sides of



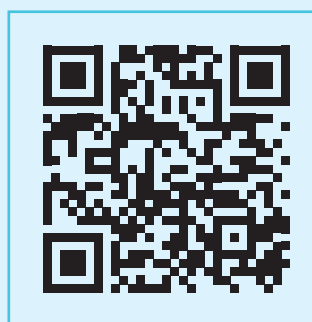
portable and mobile, fully operational units. Finally, we cannot forget Cavex impression materials and Solo Impression trays and needles. It's really quite a portfolio of quality brands and products, with something for everyone in the dental profession. Keep an eye out on our social media channels for a quiz, to see how many of the brands you remember!

 **Facebook @JSDavisLimited and**

 **Instagram @jsdavisltd.**

Lastly, I would like to mention the launch of our new online learning platform for live webinars and pre-recorded courses.

Until next time,
Daniel



Scan the QR code to see regular news updates from J&S Davis.

LM Langer Curettes

Langer curettes combine the working end of a Universal curette with the shank angulation of a Gracey curette. Angulations ease access to difficult areas and both mesial and distal surfaces can be treated with the same instrument end.

- Designed for the removal of moderate to heavy calculus from all supra- and sub-gingival tooth surfaces
- For premolars and molars in the lower jaw
- **Mini Langers have longer shanks and shorter working ends than standard Langers. These are useful in tight deep pockets and furcations**

LMDES0281M Langer Curette Mini 1/2
LM 281-282MES



The Mini Langer Curette 1/2 combines the Universal Curette's working end with the Gracey Curette's shank angulation for all surfaces on **mandibular premolars and molars, and furcations.**

LMDES0283M Langer Curette Mini 3/4
LM 283-284MES



The Mini Langer Curette 3/4 combines the Universal Curette's working end with the Gracey Curette's shank angulation for all surfaces on **maxillary premolars and molars, and furcations.**

"The langer curettes have the best of both worlds of periodontal instrument design, with the shank of a gracey curette combined with the working end of a universal curette allowing for easier reach to posterior areas. Both the mesial and distal aspects of the teeth can be treated with the same instrument allowing for a more efficient work flow. The ergonomic design of the handles allows for a more balanced grip, along with reducing pinch force and strain on muscular skeletal structure."

Morag Powell, Lecturer in Dental Therapy & Hygiene, Peninsula Dental School



LMDES0285M Langer Curette Mini 5/6
LM 285-286MES



The Mini Langer Curette 5/6 combines the Universal Curette's working end with the Gracey Curette's shank angulation for all surfaces on **mandibular and maxillary incisors, and furcations.**

SPECIAL OFFER: BUY 3 LM LANGERS (ERGOSENSE HANDLE ONLY) GET AN LM MIRROR HANDLE 25 ES FREE! (Worth RRP £12!)



The **LM Mirror Handle 25**: Single-ended, available in red, grey or blue, mirror not included. Simple stem: 25 mirror handle threads are in accordance with international standard M2.5. The mirror shank must have a diameter of 2.5 mm.

LM RondoPlus Instrument Sharpener



LM-RondoPlus™ is an instrument sharpening machine, suitable for use with all hand instruments that can be resharpened. Thanks to its simple operation method, learning how to use the machine takes only a few moments.

- Easy and quick – the blade is held in the correct sharpening position and the grinding stone rotates. Sharpening one instrument only takes a few seconds.
- Versatile – suitable for both perio and prep instruments, for both right or left-handed, the direction of rotation can be selected.
- Accurate – a dual-position instrument rest. Upper position for preparation instruments and the lower for periodontal instruments.



Scan QR Code for more information and videos of the RondoPlus in action.

Contact J&S Davis on 01438 747344 for an extra special price!

A new 'GAME CHANGER' in the treatment of

SENSITIVITY

7
YEARS OF RESEARCH

3
INTERNATIONAL PATENTS

24
CLINICAL STUDIES AND CASES

CURASEPT BIOSMALTO

Remineralisation of Enamel and Dentine:
The **Biomimetic, Bioactive** and **Biocompatible** choice

In Brief: With an innovative, patented formula containing Amorphous Calcium Phosphate (ACP) enriched with carbonate and fluoride, Biosmalto provides a biomimetic type action that stimulates the remineralisation of a tooth surface to create newly formed hydroxyapatite crystals.

The potassium nitrate and nano-sized particles inside Biosmalto depolarise nerve fibres and occlude exposed dentinal tubules for rapid pain relief, and a highly effective and long lasting de-sensitising effect.

Indications: Ideal for those suffering from hyper-sensitivity due to exposure of the dentine through weakened enamel and/or gingival recession. Also for teeth whitening patients (before and after treatment) and immediately before hygiene/ dental treatments.



Scan for Information Samples and Treatment Protocol

Special offer: Buy 2 get 1 free on Biosmalto Impact Action Mousse (150ml and 50ml tubes, cheapest item free).

Step One
Mousse is 'All Fruits' flavour



Curasept Biosmalto Impact Action Mousse (150ml):
In-Surgery Application



Curasept Biosmalto Impact Action Mousse (50ml):
At-Home Application over 30 - 90 Days
(Depending on Indication and Treatment Protocol)

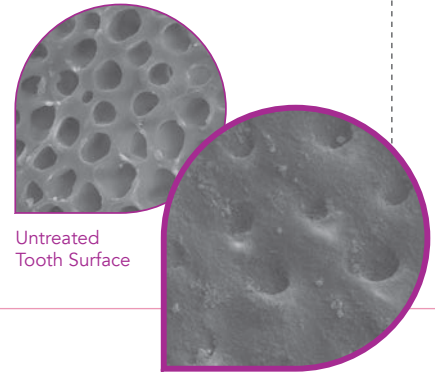


Curasept Biosmalto Toothpaste and Mouthwash:
Daily At-Home Use

A study* conducted by the ISTEK CNR:

Curasept Biosmalto (Sensitive line) was found to have an excellent ability to restore demineralised enamel to its native structure by depositing a new crystalline phase in continuity with the existing one, completely occluding acidified and exposed dentinal tubules. It's effectiveness was qualitatively tested in vitro by analysing it with a Field Emission Scanning Electron Microscope (FEG-SEM).

* Study on 'Characterization of a toothpaste containing bioactive hydroxyapatites and in vitro evaluation of its efficacy to remineralize enamel and to occlude dentinal tubules': Lorenzo Degli Esposti¹, Anna Tampieri¹, Michele Iafisco^{1,*} Institute of Science and Technology for Ceramics (ISTEC), National Research Council (CNR).



Untreated
Tooth Surface

Tooth Treated with
Biosmalto

How the Science Works:

3 Patents: 3 Functional Substances

IMPACT ACTION MOUSSE

F-ACP ●●●●●●●●●●
COMPLEX®

The Amorphous Calcium Phosphate in Biosmalto is enriched with carbonate and fluoride, and externally citrate-functionalised. In contact with saliva, the F-ACP COMPLEX dissolves immediately, rapidly releasing the active substances. A large amount of calcium, phosphate and fluoride is released selectively in the enamel and dentine lesions; where they provide an intense remineralising action by forming a new mineral phase which is stronger and more resistant (than the natural one) to acid attacks.

TOOTHPASTE & MOUTHWASH

BIO-ACTIVE
COMPLEX

HAF

Biosmalto toothpaste and mouthwash contain a mixture of two different hydroxyapatites that have the biomimetic properties necessary for effective remineralisation to develop: a hydroxyapatite substituted with magnesium, strontium and carbonate conjugated with chitosan called BIO-ACTIVE COMPLEX, and a HAF fluoro-hydroxyapatite.

Natural hydroxyapatite is a very stable mineral and, even if it comes in contact with damaged tooth areas, it is not able to release active ions. Products that contain only this type of hydroxyapatite are not very effective at remineralising, although they can still claim desensitising properties.

The substitution with magnesium, strontium and carbonate, however, makes Biosmalto hydroxyapatite very reactive; meaning it is able to quickly release bioactive elements that lead to true remineralisation by exploiting the normal biological processes. In addition, the presence of fluoride helps to create a mineralised surface that is stronger and more resistant to acid attacks.

Benefits: Daily use of Curasept Biosmalto products provide rapid pain relief and a highly effective and long-lasting de-sensitising effect as well as inhibit the formation of bacterial plaque, stimulate the remineralisation of enamel and dentine, and protect against acid attacks as well as erosion, abrasion and brushing damage. Can be used with adults and children.

Keep it simple with Panavia V5 Suitable for ALL indications



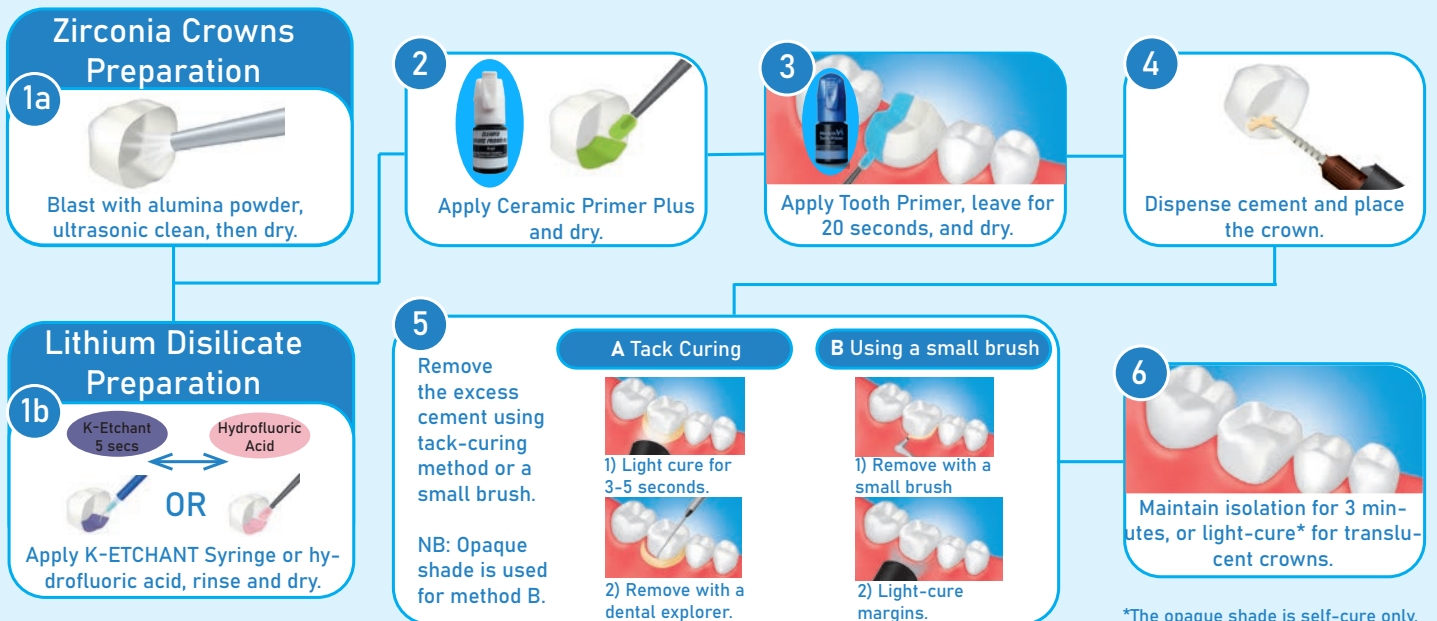
- Crowns
- Bridges
- Inlays
- Onlays
- Veneers
- Implant abutments



Scan QR code for more in-depth information and protocols for use.



BASIC PROCEDURE FOR ZIRCONIA & LITHIUM DISILICATE RESTORATIONS



Caries Detector

Caries Detector is used for disclosing carious dentine in cavity preparations. It provides support for the excavation of the demineralised outer tooth structure affected by the caries, making it possible to remove the caries as completely as possible.

KUR0566 Caries Detector 6ml



Clearfil Universal Bond Quick

- Simply apply, dry & cure
- Reliable for all direct and indirect restorations
- To be used in total-etch, selective-etch, or self-etch methods
- No need to wait, rub in thoroughly, or apply several coats
- Durable bonding with minimal risk of repair work
- Takes less time than most other available bonds

KUR3572 Clearfil UBQ 5ml bottle



Clearfil Majesty ES-2 Composite

- High filler content
- 4 year shelf life
- Consistent colour before and after light curing
- Processing time 4.5 minutes in normal, ambient light
- Premium shading with enamel and dentine shades available
- VITA approved colours
- Excellent polishing properties

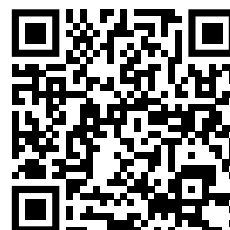


Clearfil Majesty ES Flow Composite

- Low viscosity
- Superior easy handling
- Wide range of indications including injection moulding
- Exceptionally easy to polish
- Wide shade range



For best results, use LM Arte Dark Diamond Instruments



Special offer: Buy 4 Clearfil Majesty Composites (mix & match) get a Caries Detector FREE!

Anterior Composite Case by Dr Germán Dorgan



Dr Germán Dorgan
GDP based in Norwich

In the provided case, the patient has expressed interest in potential tooth whitening. Upon assessment, it was noted that the patient had previously undergone Invisalign treatment and had various restorations completed by a previous dentist. After whitening, it was advised that replacement of some restorations would be necessary to improve the outcome of the aesthetic treatment. This cosmetic case raises important considerations for achieving the desired aesthetic outcome while addressing previous dental work.



Once the whitening was completed and the shade was reviewed with the patient, the old restorations were removed. After removing any possible recurrent caries and beveling the enamel for adequate blending of the composite, the substrate was air-abraded with Oxidum Aluminium 27 microns.

In the next stage, the enamel and dentin were conditioned using the Gold Standard Total Etch bonding system, following the next steps.

1. Etching of enamel and dentin.
2. Primer application.
3. Bond application.
4. A small amount of Majesty ES Flow was placed to cover the dentine (resin coating)



The palatal shell was built using a putty stent, this shell provided support for the Unica Matrixes, which were also fixated using myWedge



Once the interproximal wall was built on UR1, UL1, and UR2, an acetate matrix was used to help build the enamel layer, guiding appropriate line angles from the cervical area.



Immediate post operative



myQuickmat Forte Starter Kit

One system for restoring teeth with different crown heights, missing cusps and wide cavity preparations.

- Exceptional matrix adaption and retention
- Premium-quality stainless steel
- Strong separation force for tight contacts
- Replaceable, interchangeable and autoclavable plastic extremities

POL6883 myQuickmat Forte Starter Kit

Special offer:

Buy myQuickmat Forte Starter Kit get 2 packs of 50 (100) sectional matrices FREE (5786 - 0.025mm/6.4mm) worth £88!



Scan here for more information



LumiContrast Sectional Matrices

LumiContrast is an innovative sectional matrix; with a matte blue surface which gives low reflection and high contrast between the dark matrix and the white tooth.

- Low reflection
- High contrast
- Dark colouring
- Ideal for monocular lenses
- Indispensable for dental microscopes

Special offer:

Buy 2 packs of LumiContrast Matrices get pack of assorted wedges FREE



Available in a range of sizes. Scan here

Unica Anterior

The one solution for anterior restorations.

Unica is the simple and ideal matrix for anterior restorations such as class III, IV, V, direct stratification composite veneers, and shape modifications.

- Contoured profile for an anatomic restoration of the interproximal margins
- Easy management of the cervical area: predictable restoration and/or gingival retraction
- Placement wings for ease of positioning and matrix adaption
- Restoration of both interproximal and cervical margins at once
- POL6900 Unica Intro Kit

Special Offer: Buy Unica Intro Kit, get Clearfil Majesty ES Flow FREE



Scan QR code for more information

Cream Alginate



The alginate that thinks it's a silicone!

Due to a combination of 5 micron accuracy, high tear strength and excellent elasticity, the properties of this dental impression material are equal to those of a silicone material.

- Detail reproduction of at least 5 microns
- Easy mixing
- Highly elastic
- High tear strength
- Five - year shelf life
- Outstanding scannability
- Available in normal (90 sec) and fast set (60 sec)

Special offer: Buy 4 bags of Cream Alginate, get a box of Solo Impression trays FREE!

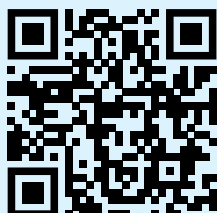


ImpreSafe Impression Disinfectant

Cavex ImpreSafe Impression Disinfectant takes just 3 minutes to kill bacteria, viruses and fungi without affecting the impression surface.

- Time saving
- Doesn't affect the impression surface, maintaining accuracy
- Economic: 1 litre of concentrate is equal to 33 litres of ready-to-use
- Only requires (on average) once weekly changes - time saving and economic
- Complies with DGHM guidelines and EN 1040, EN 1275, EN 13727, EN 13624, EN 14561 and EN 14562
- Available as a complete system - liquid, water bath and time

Special offer: Buy Cavex ImpreSafe Starter Kit, get Cavex Cream Alginate FREE!



Scan for more information



For more information
 scan here or call
 01438 747344 to
 request a demo.

Smart-Port Premium

SMART-PORT Premium – the perfect solution for mobile dentistry.

Coming in at just 12kg, the Smart-Port Premium offers a solution for almost every procedure a dentist might perform.

From scaling to fillings, from crown preps to denture easing, the Smart-Port Premium will even allow the dental professional to do RCT treatments.

How? Because the Smart-Port Premium offers an impressive array of services:

- An enviable high volume suction facility that would compete with most surgery based chairs (300 litres per minute)
- EMS Piezo scaler – with LED and Spray function
- Bien Air Micro Motor with digital displays and control – also with LED and spray function
- 3 in 1 syringe
- Storage unit for Clean and Dirty dental instruments

This unit is highly functional, robust and reliable. All services can be used continuously without the need for stopping to cool.

All of this is housed in a robust case and can be assembled and packed away in minutes in its own cart for convenience and ease of movement.

Germa Vacuum Pillow



Germa Vacuum Pillows provide you with customised, semi-permanent stabilisation and positioning of your patient during dental treatment. The pillow gives your patient that extra level of comfort and security, all the while holding them still while you perform your dental procedures. This pillow is ideal for all dental practices and can be used for disabled, elderly or infirm patients and children.

- Can be shaped and reshaped in seconds
- Density and firmness can be easily adjusted
- Durable, strong white PVC – film in shell, easy to clean and disinfect
- Supports and stabilises patients in the dental chair

Available in the following Sizes:

GRM22391100000	Vaccum Pillow White 80 x 100cm
GRM22393300000	Vaccum Pillow White 55 x 30cm
GRM22395800000	Vaccum Pillow White 55 x 85cm

Diamond Burs

Designed for clinicians who appreciate quality!

- Only use natural diamonds = superior cutting, long lasting and wear resistant.
- Balanced shank in hardened Stainless steel = Stability in rotation, more efficient cutting, less handpiece wear.
- Thirty patterns and Seven grit sizes = a bur for all procedures.



Round

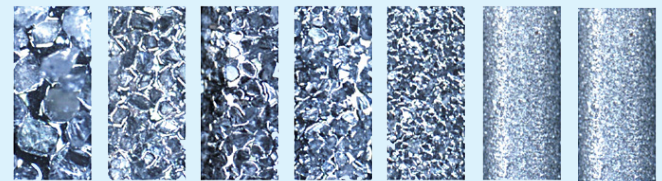
801 medium

801H super coarse
801G coarse
801F fine
801C extra fine

Cylinder

842 medium

842H super coarse
842G coarse
842F fine
842F extra fine



Flame

862 medium

862H super coarse
862G coarse
862F fine
862C extra fine
862U ultra fine

Meisinger Diamond Burs are bonded to a stainless steel body using an ultra modern galvanising process with selected natural diamond grains. This guarantees an extremely homogenous, safe and long lasting diamond coating and so, yielding optimal results. Available in a selection of up to seven different grain sizes.

Special offer: Buy 5 packs of Diamond Burs get 1 pack free (mix & match, cheapest item free)



To view the full range of diamond burs, scan here

*All offers in this brochure are valid until 31st August 2024 and are subject to availability. Not to be used in conjunction with any other offer.