



Trycare

Specialities

Tel : +44 (0)1274 88 55 44
Fax : +44 (0)1274 88 55 26
Email : info@trycare.co.uk
Web : www.trycare.co.uk/dental



Dynamic. Reliable. Honest.

Trycare is grounded in innovation, service and best practice. We pride ourselves on being dynamic, reliable and most importantly of all honest! We incorporate these values into our business activities and work to provide products, services and technologies that address a variety of dental issues while rallying to the slogan "For the Dentists of tomorrow".

As we strive to achieve our goals, we ask for your continued support and trust.

It's come to our attention that...

...you think we are a new company

Located at the epicentre of UK Dentistry we can trace our pedigree back over 75 years of delivering reliability, service, innovation, value, knowledge, products and honesty to our customers nationwide. We can provide an unparalleled level of dental knowledge to support your desire to deliver the best possible treatment to your patients.

...you think we only sell 'Speciality' Products

We are justifiably proud of the many unique "Speciality" products exclusively available from Trycare including Adin Implants, OsteoBio!® by Tecnos, the complete Tokuyama range, BioMin®, Kerator overdenture attachments and many more. However, in addition to these, we offer all the consumables you need on a day-to-day basis to run your Practice seamlessly. We stock all the products from all the major manufacturers.

...you think we are a small company

The UK's fastest growing dental dealer, since 2016, we have quadrupled the size of our warehouse to enable us to stock even more products and expand our ranges with the ever-changing dental environment. We listen to our customers wants and needs.

...you think we are expensive and don't do deals

We continuously monitor the prices of all of our competitors to ensure that we are always competitively priced! And offer the Trycare Price Pledge that if we're not we will refund the difference. We offer all the national deals from all the major manufacturers plus our own Trycare Exclusives. That's the magic of Trycare!

You get it all from Trycare

SPECIALITY PRODUCTS

ALL MAJOR
MANUFACTURERS

BRAND EXCLUSIVES

GENERAL PRODUCTS

COMPETITIVE PRICES

FAST SERVICE
AND DELIVERY

OVER 28,000 SOUGHT
AFTER PRODUCTS



Trycare Price Pledge

We continuously monitor the prices of all our competitors to ensure that we are always competitively priced! In addition to this we promise that we will price match any published price for any identical product*. We promise never to be undercut in the Trycare dental hypermarket! That's the magic of Trycare!

Ask your local Trycare representative for details and discover the magic of Trycare for yourself!

Call **01274 885544** Visit **www.trycare.co.uk**

*Applies to exactly identical product, if in stock with our competitor and supported by proof. Does not apply to special promotion prices.



unique
**spherical
composites**
only from



TOKUYAMA DENTAL are renowned
for quality and innovation.

Continuously working on the further
development of high-quality dental
products to meet the highest
standards in the dental industry.

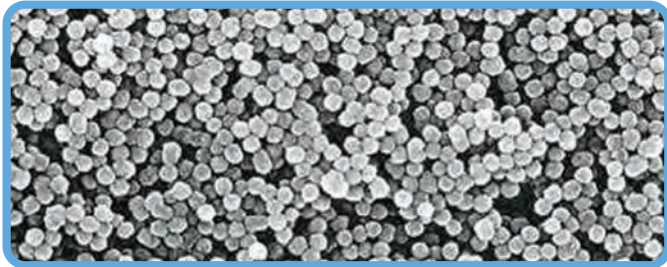


Trycare

The Sheer Genius of Tokuyama Composites

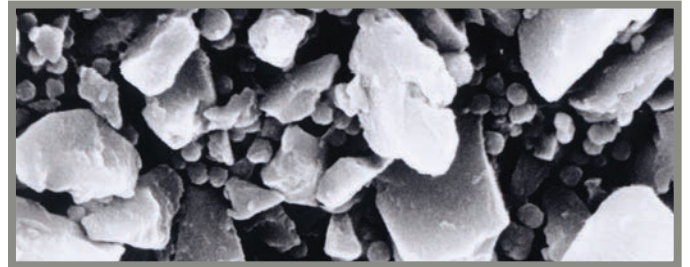
TOKUYAMA are the only composite manufacturer to use patented spherical filler particles.

Tokuyama Synthetic Spherical Fillers



In this process, the Sol-Gel method is used to progressively coat spherical fillers in an organic solution. After several weeks, the fillers have "grown" evenly in a spherical shape and are the optimal size for their desired colour adaptation and outstanding physical properties.

Conventional Fillers



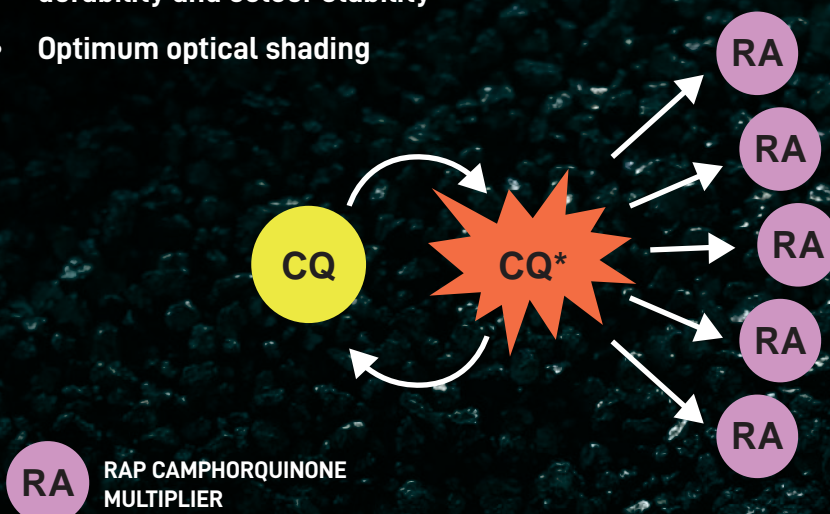
Glass materials are ground until the individual filler particles are within a desired size range. However, control of the size is not possible, so the filler particles differ significantly in shape and size. This becomes particularly clear as soon as they are observed under the scanning electron microscope.

Genius Spherical Filler & Resin Technology

Patented Radical Amplified Polymerisation (RAP) Technology enables Tokuyama to reuse the camphorquinone photo-initiator over and over and over again. This speeds up the curing time dramatically whilst enabling Tokuyama to reduce the amount of camphorquinone in their composites compared with other brands.

- Smooth restorations that stay smooth
- Diffusion & transmission for optimal shading & aesthetics
- Mirror reflection for faster, long lasting polish
- Abrasion resistant - ensuring long lasting polish, lustre, durability and colour stability
- Optimum optical shading

Spherical Fillers A Pearl of an Idea!



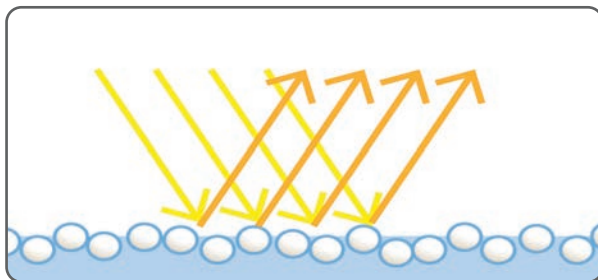
What Spherical Fillers do for you

Mirror Reflection

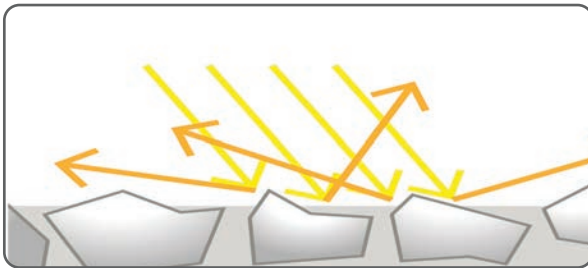
All Tokuyama spherical sub-micron fillers reflect light uniformly – like a mirror. The rough surfaces of other composites scatter light diffusely.

On smooth surfaces, such as natural enamel, light is reflected away at the same angle (the angle of reflection equals the angle of incidence – the law of reflection).

TOKUYAMA composites thus ensure a natural aesthetic appearance.



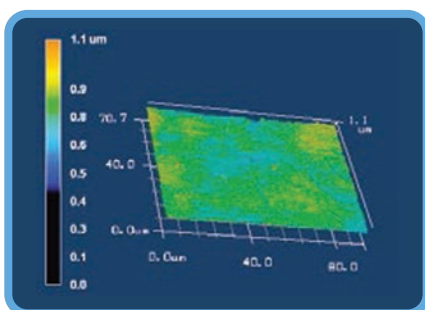
**Tokuyama
Spherical
Fillers**



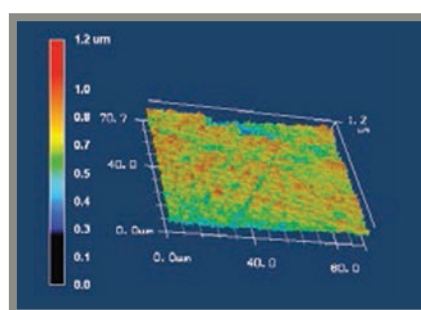
**Conventional
Fillers**

Luster Effect

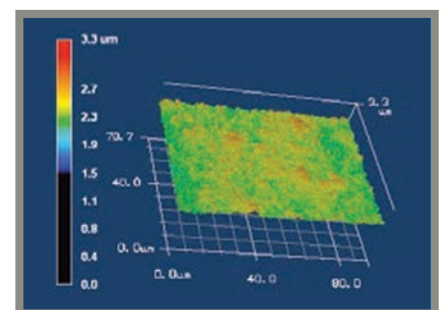
Smooth surfaces reflect light with an equal angle of incidence and reflection, creating a high degree of lustre. Rough surfaces, on the other hand, reflect light in a random manner creating a dull matt appearance. Identically shaped Tokuyama sub-micron spherical fillers produce an extremely smooth surface with a long-lasting lustre.



ESTELITE SIGMA QUICK



Venus Diamond

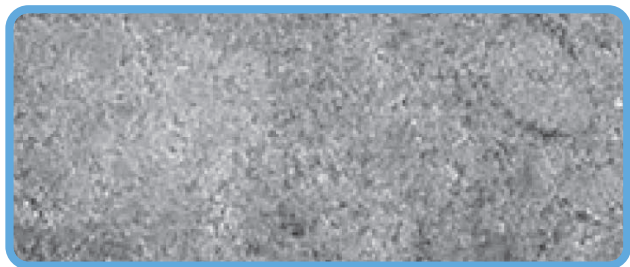


Filtek Supreme XT

Abrasion Resistance

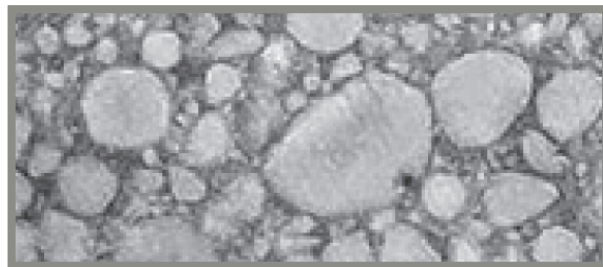
Tokuyama composites' uniform and small spherical fillers are not easy to dislodge and create a very smooth surface that is highly resistant to abrasion.

The abrasion-resistant surface of all Tokuyama composites remain smooth permanently, so that the initial lustre of these composites remains permanent too. It does not become dull.



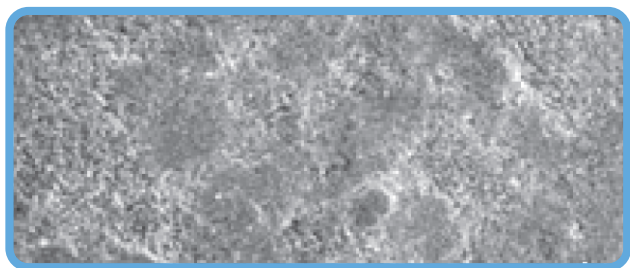
ESTELITE SIGMA QUICK

BEFORE abrasion test



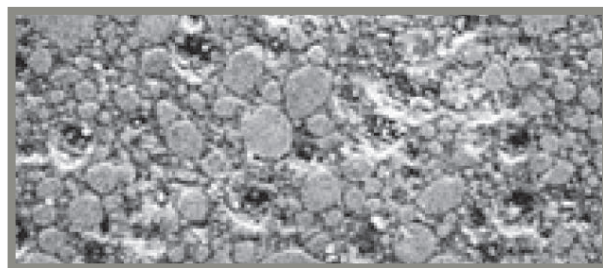
Filtek Supreme XT

BEFORE abrasion test



ESTELITE SIGMA QUICK

AFTER 50,000 load cycles:
retains smoothness



Filtek Supreme XT

AFTER 50,000 load cycles:
visible crevices of fallen out filler

Diffusion & Transmission

The high diffusion and transmission properties of Tokuyama composites ensure a uniform and gradual transition between tooth and composite. Tokuyama composites act like natural tooth enamel and ensures excellent marginal adaptation without the need for bevelling.



ESTELITE SIGMA QUICK

Soft gradual diffused edges, no
visible margins



Filtek Supreme XT

Minimal diffusion, no gradual transition,
visible margins

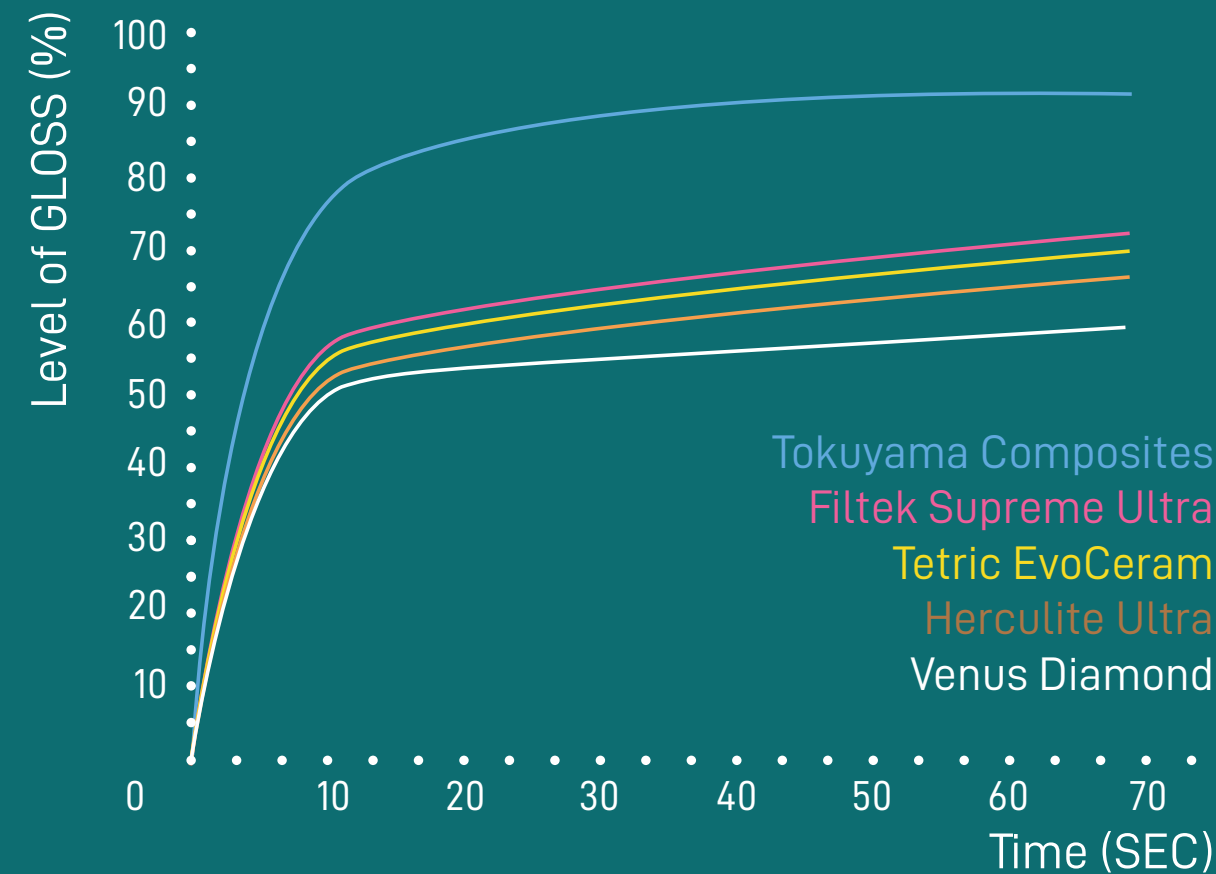


Tetric EvoCeram

Faster and Better Polishing

The relationship between polishing time and surface gloss.

The results show that Tokuyama composites produce the highest gloss in the shortest possible time.



*takes just 10 seconds to
produce a far superior polish
that lasts and lasts!*

RAP - Resin Technology Gives Minimal Shade Changes

The RAP technology ensures imperceptible shade change since the proportion of camphorquinone is much lower. Patented RAP technology uses camphorquinone over and over again, not only to speed up the cure but also dramatically reducing the high concentration that is necessary in other composites.



ESTELITE SIGMA QUICK

Almost no shade change after polymerisation.



Filtek Supreme XT

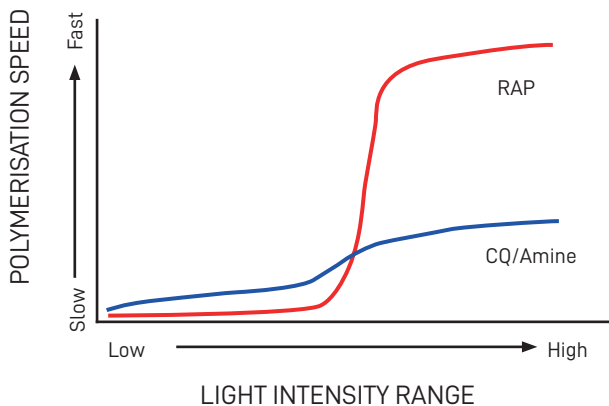
Significant shade changes due to the increased camphorquinone content.



Tetric EvoCeram

Longer Working Time Shorter Curing Time

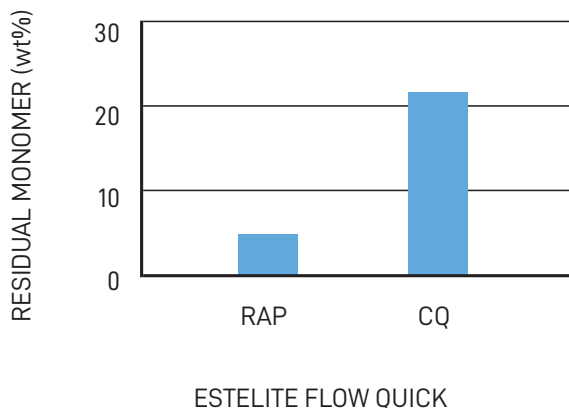
FASTER POLYMERISATION



Tokuyama's RAP (Radical Amplified Polymerisation) process gives fast curing plus high level resistance to ambient light to ensure generous working time, if required. The ease of placement, sculpting and finishing is under your control with rapid curing to save you time.

Deep and Completeness of Cure

LOWER RESIDUAL MONOMER CONTENT



RAP technology ensures a much higher degree of polymerisation resulting in much lower residual monomer. Tokuyama composites have a deeper and more complete cure.

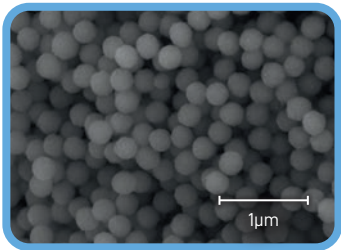
Polymerisation Speed v Intensity Range relates to Longer working Time, Shorter Light Curing Lime section.

OMNICHROMA Shadeless Composite

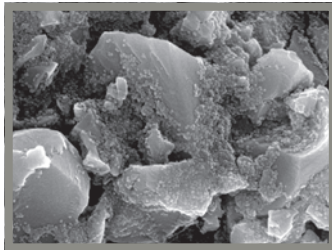
"A Dentist's Dream Come True"

For anterior
and posterior
use

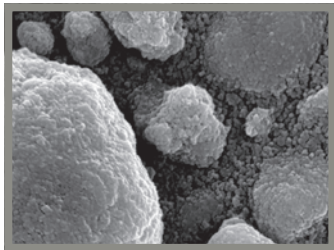
OMNICHROMA



Venus Pearl



Filtek Supreme Ultra

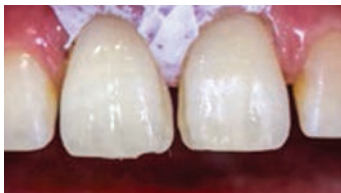
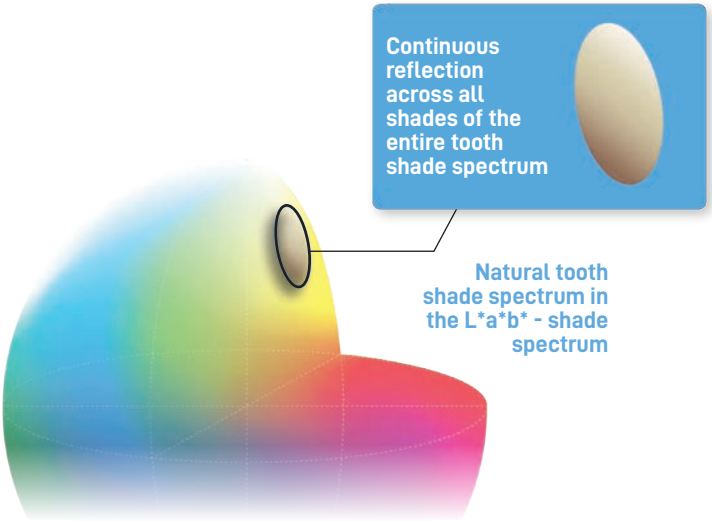


OMNICHROMA is white opaque before curing to aid modelling then miraculously adapts to the tooth shade, whatever it may be, to disappear after curing.

For the first time colour is not created by pigment, but by the "structural light" generated by its spherical filler particles combined with reflected light from the surrounding tooth. The final colour is a combination of the real tooth shade and the "structural light" created by OMNICHROMA.

OMNICHROMA BLOCKER is used to mask strongly discoloured cavities or if a higher opacity is required to mask the oral cavity in the case of large Class III or IV restorations.

- Perfect colour matching
- Simplified inventory management
- Excellent adaptability
- Non-sticky
- Excellent polishability
- Remarkable glossiness



"First I was sceptical but easy application, convincing polishing and surprisingly good colour matching convinced me"

Dr Markus Lenders



Infinite shades - all in one syringe!



OMNICHROMA		
Syringe 4g	TK0314	£61.85
PLT 20 x 0.2g	TK0316	£68.80



OMNICHROMA Flow		
Flow Blocker Syringe	TK0325	£58.20
Flow Syringe 3g	TK0326	£58.20

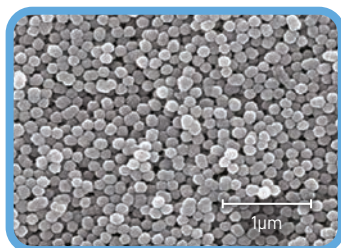


OMNICHROMA Blocker & Blocker Flow		
Syringe Blocker 4g	TK0315	£61.85
PLT Blocker 20 x 0.2g	TK0317	£68.80

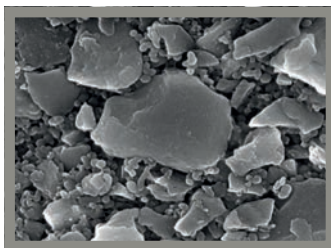
ESTELITE ASTERIA Layering Composite

Simplified Multi-Layering Technique

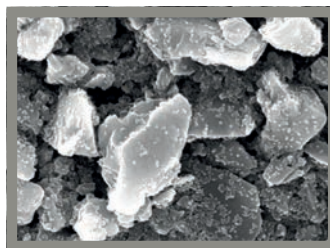
ESTELITE ASTERIA



Enamel Plus Hri



Miris2

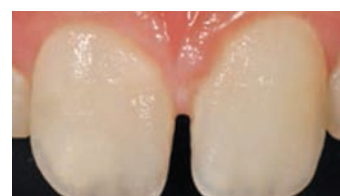
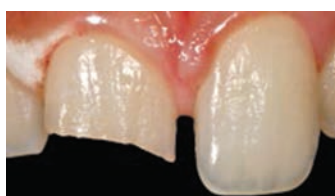
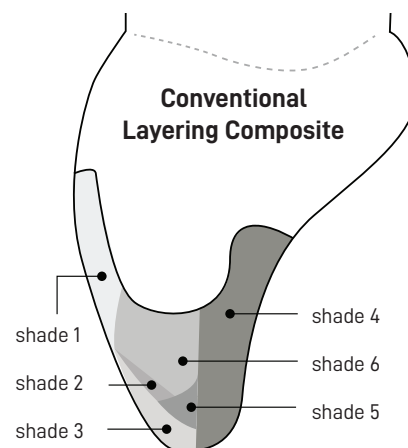
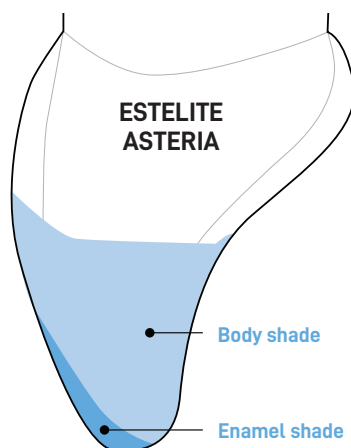


**Achieve more
with two layers
than you can
multi-layer!**

ESTELITE ASTERIA simplified multi-layering technique produces outstanding results and aesthetics compared to conventional layering.

Intense chameleon effects facilitate a remarkably natural look that cannot be distinguished from real tooth structure. While many aesthetic composites require elaborate layering, ESTELITE ASTERIA has unique optical properties that allow anyone to achieve highly beautiful results easily with only 2 layers.

- Unique chameleon effect
- Rapid curing in 10 seconds
- Extended working time of 90 seconds
- Very high lustre durability
- Excellent abrasion resistance
- Low linear shrinkage
- Optimal handling



"...using the simple layering technique, we achieved an outstanding result immediately. No further treatment was required. The body shade perfectly covered the margin between tooth and restoration and a natural looking incisal was created with enamel shades."

Professor Simone Grandini



Estelite Asteria

Syringe Kit	TK0221	£392.05
-------------	--------	---------

Contents:
7 x syringes A1B, A2B, A3B, A3.5B, A4B, NE, OcE
Clinical Guide

Estelite Asteria Syringe 4g

Syringe 4g	TK0233	£64.75
------------	--------	--------

Shades: A1B, A2B, A3B, A3.5B, A4B, B3B, BL, NE, OCE, TE, WE, YE

Estelite Asteria Syringe Refills

Syringe 4g	REFILLS	£64.75
------------	---------	--------

Contents: 1 x syringes (4.0g)
Body Shades: A1B, A2B, A3B, A3.5B, A4B, B3B, BL
Enamel Shades: NE, OcE, WE, YE, TE



Estelite Asteria PLT

PLT Trial Kit	TK0313	£7.10
Estelite Asteria PLT Essential Kit	TK0300	£392.05

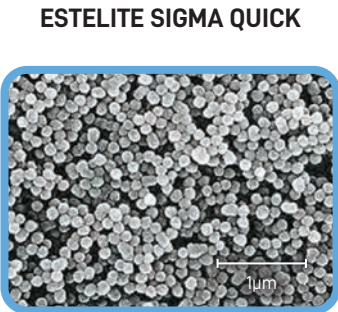
Estelite Asteria PLT

Estelite Asteria PLT Refill 15 x 0.20g	TK0304	£62.65
Shade Guide	TK0222	£60.00

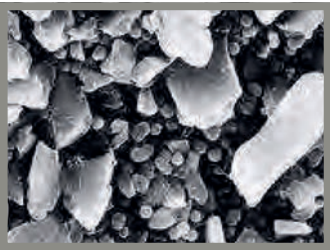
ESTELITE Σ Sigma Quick

12 Years The Best Universal Composite

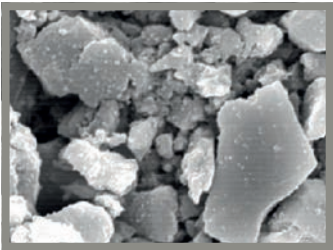
Universal
in every
sense!



Tetric Evo Ceram



Venus Diamond



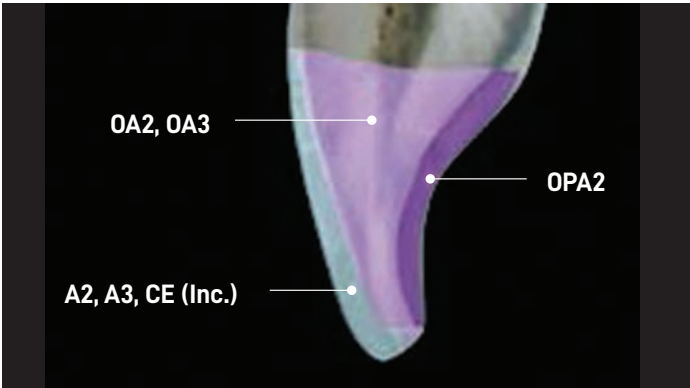
ESTELITE SIGMA QUICK is so versatile with impressive properties, both for demanding aesthetic reconstructions and for simple fillings in classes I-V.

Winner of the Dental Advisor 'Top Universal Composite' 12 years in a row!

Special aspects worth mentioning are the excellent chameleon effect, long lasting lustre, a long working time and a very short polymerisation time. It works well with layering techniques.

- Unique chameleon effect
- Rapid curing in 10 seconds
- Extended working time of 90 seconds
- Smooth surface with long-lasting lustre
- Excellent abrasion resistance
- Low linear shrinkage
- Quick and easy to polish

i Research shows that just 3 shades of **ESTELITE SIGMA QUICK** perform comparably with **OMNICHROMA** - shades: A3, B3 and C3



The anatomical build-up of an anterior tooth in cross section and its progressive reconstruction with **ESTELITE SIGMA QUICK**

Has RAP Technology



"...a versatile composite system with impressive properties, both for demanding aesthetic reconstructions and for simple fillings in classes I-V..."

Dr C. Stockleben



Estelite Sigma Quick Syringe Intro Kit

Intro Kit	TK0162	£177.40
-----------	--------	---------

Contents: 6 x Syringes (A1, A2, A3, A3.5, OA, OPA2, 1 x Bond Force bottle 1ml, Dispensing Well.



Estelite Sigma Quick PLT Intro Kit

	TK0164	£106.20
--	--------	---------

Contents: 10 PLTs of each shade: A2, A3, 5 PLTs of each shade: A1, A3.5, OA3, OPA2, 1 Bond Force 1ml, Bottle, 1 Dispensing well, 25 applicators, shade guide

Syringe A5 3.8g	TK0126	£44.30
-----------------	--------	--------

Shades: A1, A2, A3, A3.5, A4, A5, B1, B2, B3, B4, BW, C1, C2, C3, C2CE, OA1, OA2, OA3, OPA2, WE

Estelite SQ PLT	TK0158	£56.65
-----------------	--------	--------

Shades: A1, A2, A3, A3.5, A4, A5, B1, B2, B3, B4, BW, C1, C2, C3, C2CE, OA1, OA2, OA3, OPA2, WE

Shade Guide	TK0194	£48.50
-------------	--------	--------

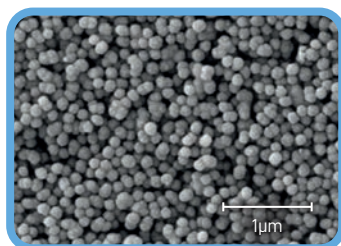
PLT Trial Kit	TK0168	£7.10
---------------	--------	-------

ESTELITE

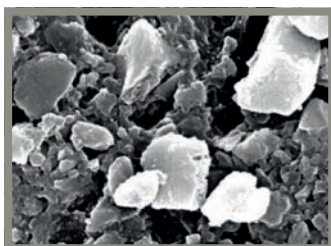
Universal Flow

Viscosities For Every Purpose

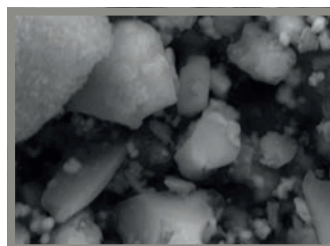
ESTELITE UNIVERSAL



G-ænial Universal Flo



Tetric EvoFlow



Strong as regular composites and universally applicable

ESTELITE UNIVERSAL FLOW offers optimal viscosity for every application: Super Low, Medium or High.

All the viscosities have one thing in common: they are as strong as regular composite and universally applicable.

- Choice of three viscosities
- Enhanced chameleon effect
- Rapid curing in 10 seconds
- Improved flowability
- High lustre durability
- Low shrinkage
- Excellent polishability
- Outstanding resilience



"Always the right viscosity and with perfect polishability make this the flow of choice"

Dr Markus Lenders



Estelite Universal Flow



Estelite Universal Flow



Estelite Universal Flow



Estelite Universal Flow

Super Low 3g	TK0015	£39.25
Shades: A1, A2, A3, A3.5, A4, A5		

Medium 3g	TK0015	£39.25
Medium 1.7g	TK0001	£23.35
Shades: A1, A2, A3, A3.5, A4, A5, B3, BW, CE, OPA2, OPA3, OPA4		

High 3g	TK0015	£39.25
Shades: A1, A2, A3, A3.5, OPA2, OPA3, OPA4		

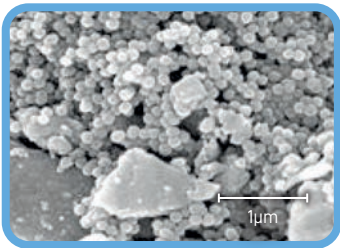
Medium PLT 20 x 0.2g	TK0040	£59.45
Shades: A1, A2, A3, A3.5, A4, A5, B3, BW, CE, OPA2, OPA3, OPA4		

ESTELITE Posterior

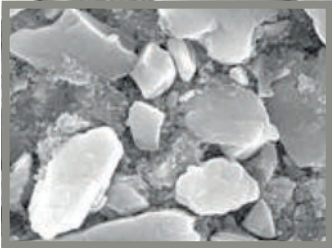
Strong - Even Under Pressure

The posterior
for heavy
bites!

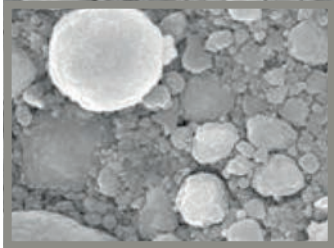
ESTELITE POSTERIOR



Gradia Direct Posterior



Filtek P60



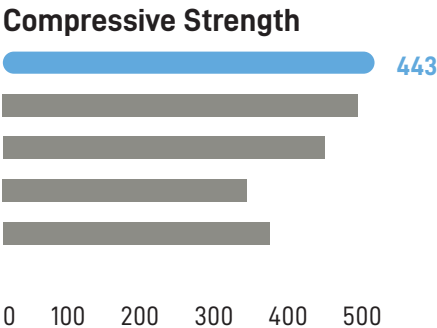
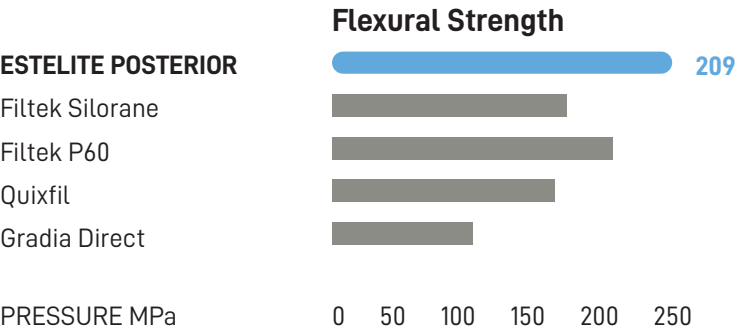
ESTELITE POSTERIOR is designed specifically to have properties that resist the demands of the posterior region, creating restorations that are even more resistant and long-lasting.

- Fast curing (10 seconds)
- High shear and compressive strength
- Outstanding aesthetics
- Superior handling
- High radiopacity
- Low shrinkage



"ESTELITE POSTERIOR QUICK represents the best choice when, in cavity classes I, II and IV, the fillings to be placed are exposed to high stress."

Dr. Markus Th. Firla



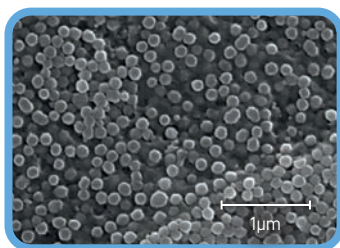
Estelite Posterior		
Syringe 4.2g	TK0218	£44.95
Shades: PA1, PA2,PA3, PCE		

ESTELITE

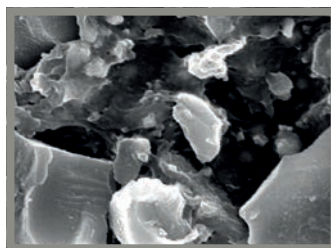
Bulk Fill Flow

Penetrates all the nooks and crannies

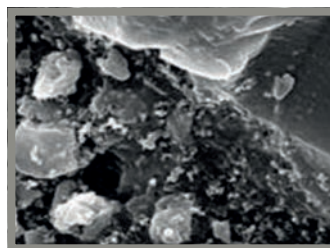
ESTELITE BULK FILL



Tetric EvoFlow Bulk Fill



SureFill SDR Flow



Flows where others cannot reach!

ESTELITE BULK FILL FLOW

Penetrates all the nooks and crannies leaving no voids unlike inferior lathe cut materials.

ESTELITE BULK FILL FLOW, as with all the range, offers an excellent aesthetic outcome, with reduced stress and a product that flows into all the difficult areas.

Uncured the material is translucent to allow light to the bottom of the cavity, but after curing it is opaque and covers so well that capping is not needed. A fast, aesthetic restoration is easily accomplished.

- Reduced polymerisation stress due to new "edgeless" composite fillers
- Sufficient opacity for aesthetic restorations without needing a capping layer
- Rapid curing in 10 seconds
- Controlled refractive index
- Excellent cavity adaptation
- Self-levelling

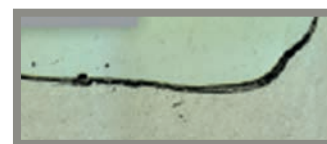


Marginal failure, gaps, and voids were common in other tested brands

Conventional composites



SonicFill2



Filtek Bulk Fill



SureFill SDR flow+

Venus Bulk Fill

Aesthetic Superiority



ESTELITE BULK FILL FLOW



Filtek Bulk Fill



Venus Bulk Fill



Estelite Bulk Fill Flow

Syringe 3.0g TK0284 £40.30

Shades: A1, A2, A3, B1, U



Estelite Bulk Fill Flow PLT

PLT Pk20 x 0.2g TK0289 £58.40

Shades: A1, A2, A3, B1, U, C2, C3, CERV, OA1 OA2, OA3,

Dispensing Tips Pk50

TK0294

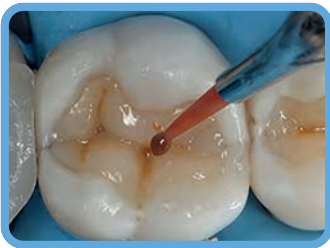
£36.30

ESTELITE Colour

For Characterising Your Masterpiece

ESTELITE COLOR

Clinical Case by Dr Newton Fahl



**Characterises
any
restoration!**

ESTELITE COLOR is a low viscosity, flowable composite that helps to recreate the characteristics of natural teeth by adding customisable tints and opaques to your aesthetic restorations.

With the aid of different stains, it is possible to replicate a very wide range of tooth characteristics. Apply under or between each layer to create individual and unique results.

- Makes restorations more natural
- 9 tints and 4 opaques

Tint Shades:

Clear, White, Blue, Yellow, Grey, Ochre, Red, Lavender, Dark Brown

Opaque Shades:

Pink Opaque, High Chroma Opaque, Medium Chroma Opaque, Low Chroma Opaque

- Apply with instrument or brush
- Compatible with all composite systems



Estelite Color

Syringe Kit	TK0241	£610.95
Contents: 13 syringes (clear, white, blue, yellow, gray ochre, dark brown, red, lavender, pink opaque)		

Estelite Color

Syringes 0.9g	TK0253	£60.50
Shades: Yellow, Dark Brown, Grey, Red, Pink Op, Low Chroma, Med Chroma. High Chroma, Icher, Lavender, Blue, White, Clear		

Modelling Brushes

COMPOSITE BRUSH NO 24 is a smoothing and detailing tool all in one brush. Perfect for applying tints, opaques and smoothing the final layer before curing.



Broad End

- Anatomisation
- Positioning
- Thickness adjustment



Point End

- Texture
- Characterisation
- Finishing



Brush No.24 x 5	TK0240	•	£50.95
-----------------	--------	---	--------

The Genius of Tokuyama Bonds & Cements

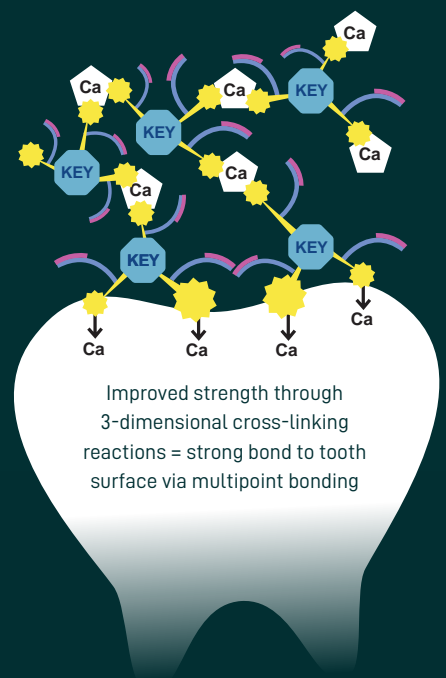
TOKUYAMA BONDS & CEMENTS are the result of the Sheer Genius of TOKUYAMA's Research and Development Laboratory. They have created a high quality range of bonding adhesives and cements for every challenge. Guaranteeing simple, fast and safe application for long-lasting results with extraordinary bond strength.

TOKUYAMA DENTAL's unique 3-dimensional, self-reinforcing monomer instantly adheres to the calcium in the tooth structure ensuring a uniform, thin film - even on edges and corners, and with no pooling at the base of cavities.

This 3D-SR-Monomer has been modified and optimised in the 2nd and 3rd generation, so that additional reaction chains of different lengths on the molecule form various multiple bonds, producing an extremely tough and tear-resistant adhesive layer in a very short time. Through numerous chemical and mechanical bonds to the apatite of the tooth surface and the calcium ions of the tooth substance, the self-reinforcing monomer creates a 3-dimensional matrix.

Genius 3D-SR-Monomer

- Forms an extraordinary chemical bond between the composite material and calcium in the tooth
- Blended with additional monomers to achieve a bond with any and all materials
- Along with low viscosity, leaves no "dry spots" even in stepped cavities
- Forms "Super Dentine" - resistant to acid attacks protecting against secondary caries
- Paired with intelligent original BoSE initiator (which aids polymerisation under acidic conditions) for rapid self-cure with resin materials

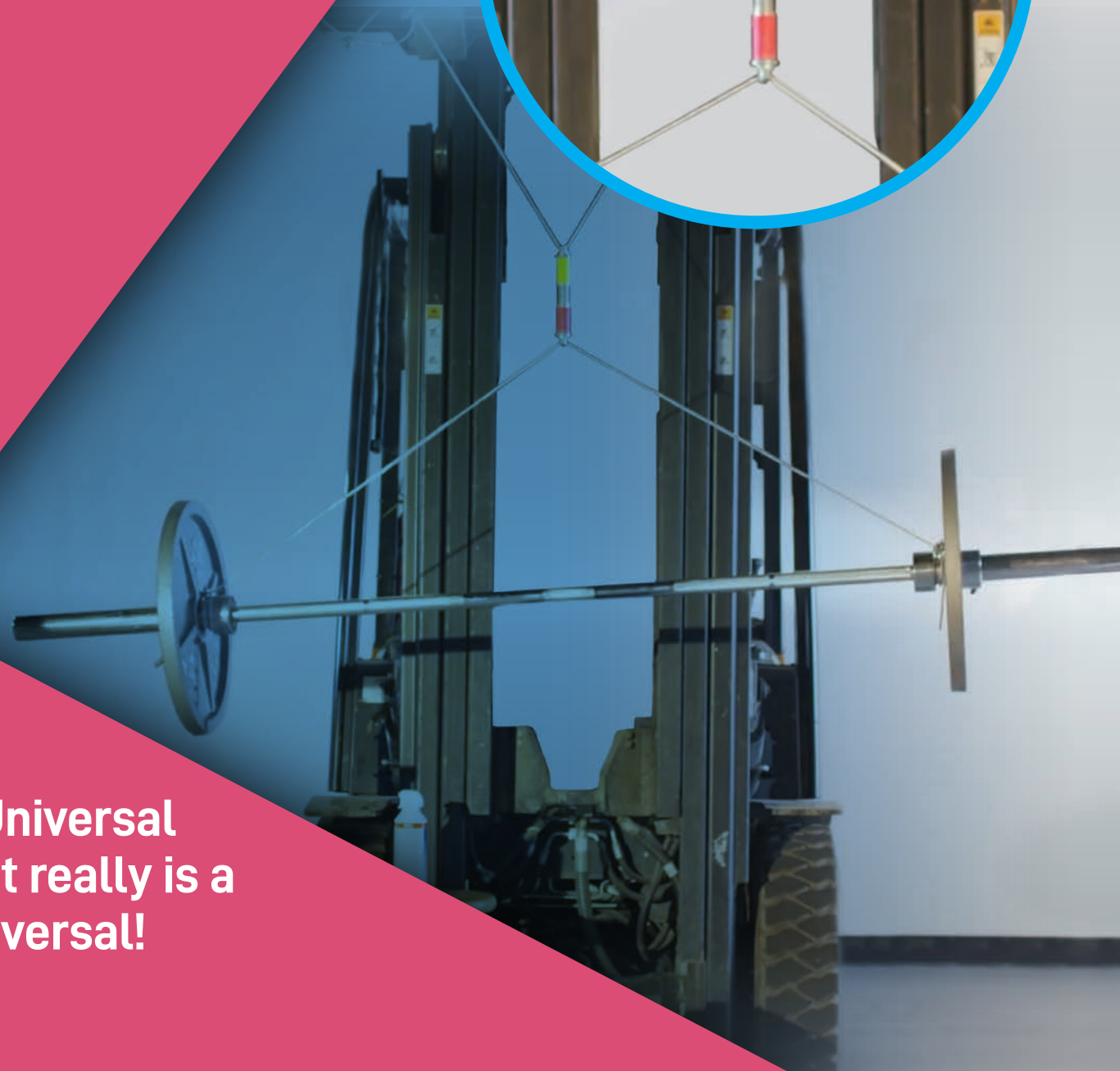
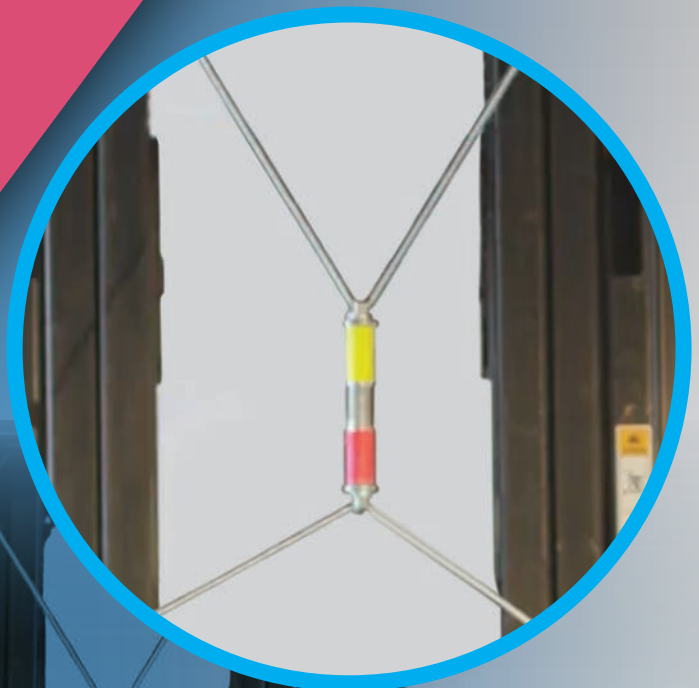




Bonds that Bond Before they Bond!

Tokuyama bonding resin (3D-SR) instantly adheres to tooth calcium ensuring uniform even coverage on edges and corners, with minimal film thickness and no puddling in the base of cavities.

Bonds that Bond before they Bond!



**A Universal
that really is a
Universal!**



BONDS ANYTHING IN 20 SECONDS



Heat Resistant Glass
Boron-silicate Based Ceramic



Chicken Bone
Apatite & Collagen (like Dentine)



Steel Dustpan
Non Precious Metal



Porcelain Cup
Silica Based Ceramic



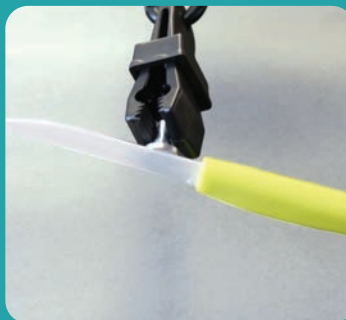
Tomato Tin
Non Precious Tinplate



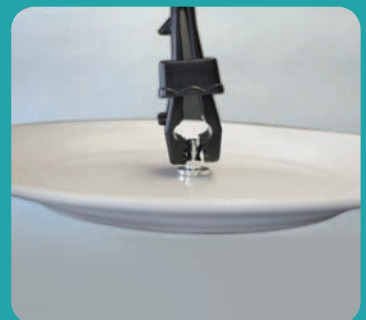
Beer Glass
Silica Based Ceramic



Steel Hammer
Non Precious Metal



Ceramic Knife
Zirconia Oxide Ceramic



Pottery Plate
Silica Based Ceramic

UNIVERSAL BOND II

The Only True Universal Bond

BONDS ANYTHING IN 20 SECONDS

Perfect for digital restorations

UNIVERSAL BOND II is the only truly universal bond. Compatibility with self, total and selective-etch techniques and light, dual and self-curing composite materials. For silica based, zirconia based and metallic restorations.

NOW with NO refrigeration needed.



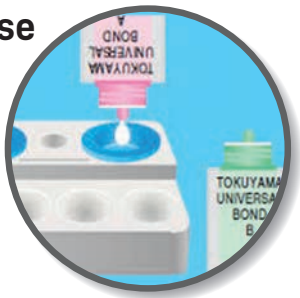
Universal Bond II Plus

Intro Kit	TK0320	£99.00
-----------	--------	--------

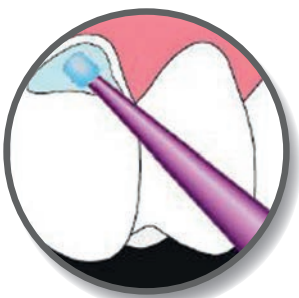
Contents:
Universal Bond A (5.0 ml), Universal Bond B (4.0 ml) 1 x mixing well, 5 x disposable mixing well 25 x disposable applicator.

As a universal adhesive, **TOKUYAMA UNIVERSAL BOND II** has been designed to be fully compatible with light-cured, self-cured and dual-cured composite materials. Improves the bond strength of polymerisable resin material (adhesive resin cement, acrylic resin and composite resin) to indirect restorative materials such as glass-ceramics (porcelain), oxide-ceramics (zirconia and alumina), metals (precious and non-precious) and resin materials including inorganic filler. **Perfect for digital restorations**

Dispense & Mix



Place in Position



Air Dry to Gently Cure



Takes only 20 seconds to mix place dry and self-cure!

ESTECM II plus

Universally Usable

Contains Universal Bond

CEMENTS ANYTHING

Universally usable - with reliable adhesion and aesthetics!

NOW with NO refrigeration needed.



contains
universal bond

- **No additional primer or activator**
- **Same procedure for all surfaces**
- **Mix 1:1, apply, air blow, finished!**

Estecem II Plus

Paste Kit	TK0330	£204.70
Contents: Paste universal, mixing dish, 10 mixing tips, 25 microbrushes, Universal Bond A+B Universal Primer A+B		

Estecem II Plus

Pastes 4.7g	TK0333	£131.60
Contents: Clear, Brown, Universal, White Opaque		

Mini Mixing Tips Pk40	TK0335	£63.75
Mini Mixing Tip Nozzles Pk40	TK0336	£31.90Z

ESTECM II is a dual-cure (light and/or self-cure), radiopaque, adhesive resin cement system with excellent handling, aesthetic and adhesive properties to teeth and all prosthetic materials.

Cementation of crowns, bridges, inlays, and onlays made of glass/oxide ceramics (porcelain, zirconia and alumina), metals/alloys (precious and non-precious) and resin materials including inorganic filler (composite materials).

Indications

- Cementation of crowns, bridges, inlays, and onlays made of glass/oxide ceramics (porcelain, zirconia and alumina), metals/alloys (precious and non-precious) and resin materials including inorganic filler (composite materials)
- Cementation of veneers
- Cementation of adhesion bridges
- Cementation of metal or resin cores, metal or glass-fiber posts
- Repair of fractured porcelain fused to metal crowns and all ceramic restorations

BOND FORCE II

One Bottle Bond

7th Generation "1 Bottle" Bond



Click and Bond
Dispensable Bond
Saves more than
33% wastage!

Available in 5ml
Bottle



Bond Force II Clicker pen dispenses a precise measured dose avoiding waste and accidental spillage
BOND FORCE II is a light-cured, self-etching single-component adhesive. Boasts outstanding adhesive strength values, both to enamel and dentine (especially after thermocycle loading) which makes it the bond of choice when it comes to simple, but reliable adhesion.

Bond Force II			Pen Twin Pack		5ml Refill	
Intro Kit	TK0259	£60.50	TK0261	£106.20	TK0260	£56.95
Contents: 2ml pen, dispensing well, 25 x disposable applicator (superfine)			<ul style="list-style-type: none">• Pen or Bottle• Fluoride-releasing• Does not require refrigeration			



EE-BOND

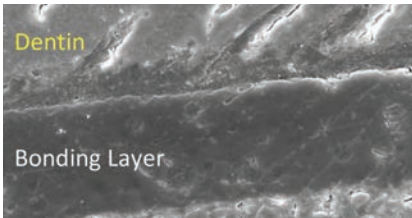
Etch and Bond

Fluoride - Release Single Application

EE-BOND creates a unique self-reinforcing 3-D monomer fusion to the tooth generating an extremely strong bond to enamel and dentine, while releasing fluoride and preventing post-op sensitivity.



EE Bond - Etch and Bond			EE Bond - Etch and Bond		
Pen Intro Kit	TK0257	£126.00	Refill	TK0258	£105.00
Contents: 5ml bottle, 25 x applicators, dispensing well, Etching Gel HV 2.5ml syringe, 10 x syringe tips			Contents: 1 x bottle EE-Bond, 2 x 2.5ml syringes etching gel, 50 x syringe tips		



EE-Bond treated surface showing calcium adhesion

- Requires only one application
- Works in wet or dry conditions
- Fluoride-releasing

ETCHING GEL HV

Preasim Placement and Etching

ETCHING GEL HV is formulated for the enamel-etching routine. With an extra fine 27g : 0.4mm dispensing tip which enables tracing-like application directly onto the preparation margins.



- **For Selective and Total-Etch**
- **Easy, accurate placement**
- **Coloured bright red**

Etch Gel HV Syringe Tips Pk50		Etch Gel HV Syringe 2.5ml Pk2	
TK0256	£28.90	TK0255	£34.00



Shield Force Plus

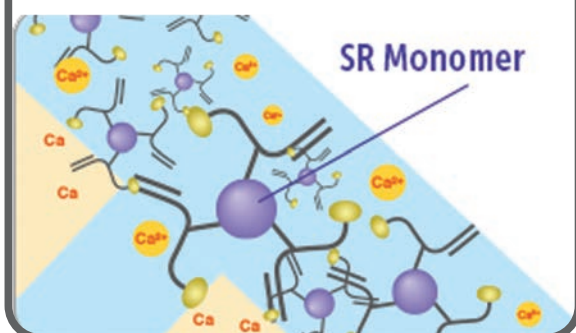
Desensitiser

"Double Block" instantly relieves sensitive preparations

Adhesive reaction between patented 3D-SR monomer and tooth apatite calcium instantly seals the tubules and the patient feels immediate relief. Then light-curing forms a strong polymerised layer stabilising the protection for long-term relief! Most desensitisers have only resin tags penetrating the dentinal tubules. Shield Force's double layer of tags and resin last up to three times longer than other desensitisers.

Calcium Bond for Instant Pain Relief

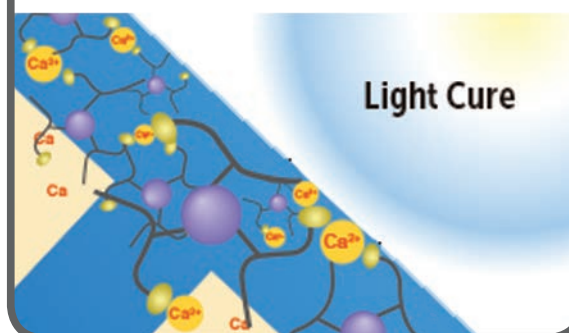
Reaction of SR Monomer with calcium ions. Followed by the formation of resin layer after air drying to remove solvent and water



Block 1- Initial Desensitisation
Dentinal fluid movement stops through the creation of resin tags 50µm deep

Polymerised for up to 3 Year Pain Relief

Polymerisation of resin layer when light-cured



Block 2 - Long-Term Desensitisation
Light curing creates a 10µm layer that provides desensitisation for up to 3 years

Does not Interfere with Bonding Solutions!

"Double Block" instantly relieves sensitive preparations and erosions!

Shield Force Plus is an advanced light-cured, resin-based desensitiser that delivers immediate and long-term relief for pre-op, post-op, and other forms of dentinal sensitivity.



Kit includes

- 1 x Shield Force Plus 3ml
- 1 x Mixing Well
- 25 x Micro Brushes

Shield Force Plus

Kit 3ml	TK0190	£147.40
---------	--------	---------

Contents:

3ml bottle, dispensing well, 25 disposable, superfine applicators

Shield Force Plus

3ml Refill	TK0191	£94.95
------------	--------	--------



I have used many similar products, all promising instant relief from dentinal sensitivity. This is the first one that has provided dramatic instant relief and works as advertised.

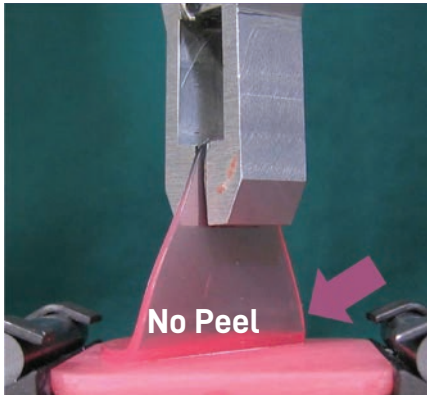
Dr Seth Roth
Head Dentist from Stoughton, MA

Sofreliner (30 years) Tough



Sofreliner was the first proper silicone reliner more than 30 years ago!
It has stood the test of time, winning best product awards even to this day!

- Provides long-lasting comfort for up to 2 years
- 40% less waste than competing brands
- Excellent relief after surgery, extraction and implant procedures
- Smooth surface, resist build-up of plaque, stain and odour
- Resists delamination (separation)
- Resists deformation from masticatory forces.
- Resists tearing/pulling by patients with sharp ridges, major undercuts and implants
- No odour, taste, or chemical irritations.
- Comes in a gun for easy application
- Resists staining from coffee, curry and wine



Sofreliner Tough M



Sofreliner Tough S



Sofreliner Tough

S Soft Kit	TK0190	£147.40
Contents: 52g cartridge, 10ml primer, mixing tips, coarse point, finishing wheel, accessories		



Sofreliner Tough

S Finishing System	TK0192	£39.60
Contents: 1 coarse point (black), 5 finishing wheels (brown), 2 washers		



Sofreliner Tough

M Medium Kit	TK0101	£147.40
Contents: 52g cartridge, 10ml primer, mixing tips, coarse point, finishing wheel, accessories		

S Soft Paste 2 x 27g cart	TK0191	£94.95
---------------------------	--------	--------

Primer 10ml	TK0106	£57.00
-------------	--------	--------

M Medium Paste 2 x 27g cart	TK0103	£94.95
-----------------------------	--------	--------



10 minutes to a whiter smile

BLANCONONE®

CLICK

Fast - ten minute application
Safe - 16% carbamide peroxide
Comfortable - no sensitivity



Call Trycare today

For your in surgery demonstration

FluoroDose



AWARD-WINNING FORMULA



DENTAL ADVISOR TOP AWARD:
FLUORIDE VARNISH 6 YEARS RUNNING

- **5% Sodium Fluoride Varnish with Xylitol**
- Tooth Coloured
- Quick, Smooth. 5 Great Flavours
- Easier To Hold, Easier To Use
- Lasts **6 Hours**

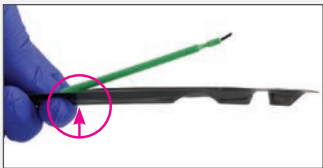
The patented Lollitray package was designed with you in mind
Four custom features, engineered to make every fluoride application easier, safer, faster and more comfortable.



EXCLUSIVE, PATENTED LOLLITRAY IS EASY TO USE AND ELIMINATES CROSS-CONTAMINATION



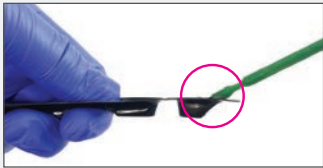
1. Smooth, easy peel.



2. Pop-up Benda® Brush fulcrum for easy access.



3. Secure, comfortable finger grip – no slipping.



4. Angled well removes excess Material.

AVAILABLE IN 5 GREAT TASTING FLAVOURS



Exposé®

centrix®
Making Dentistry Easier.™

Exposé®

Disposable Caries Indicator



Single-use applicators eliminate set-ups, cleanup and cross-contamination



Colour your Cavity

Instructions for use:



1. Take Exposé applicator



2. Lightly wet the Exposé applicator with either water or the wet tooth.



3. Apply the wet Exposé applicator to the prepared tooth.



4. Rinse and examine the area for any Exposé that remains on the affected dentin.



5. Proceed as usual.

Blue Indicators



Fine (1.5 mm point)

Extra-Fine (1.0 mm point)



Features:

- Quick & Easy to Use
- No Mess
- Blue Indicator: Easy to See
- Two Sizes of Applicator
- Pre-Loaded Benda Brush
- Perfect for Minimal Invasive Dentistry

CENTRIX

Encore[®] D/C

MiniMix[®]

Unit Dose Dual-Cure Core Buildup Material

Makes Core Buildup Easier

The MiniMix unit-dose technology eliminates waste and cross-contamination concerns.

Features:

- MiniMix technology virtually eliminates waste
- Needletip allows delivery of material to bottom of a post hole
- Non-slumping formula so there is no need to use a matrix
- Light-activate for 40 seconds for complete cure
- Cuts like dentin to reduce ditching
- Radiopaque



Encore[®] D/C MiniMix[®] is the only dual-cure sold by dose.



6 -steps for building a void-free, bonded, composite post and core:



1. Enlarge root canal to accept Encore D/C needletip. Bevel the edges to eliminate sharp angles.



2. Etch the post hole, rinse thoroughly and dry.



3. Apply bonding agent according to manufacturer's instructions.



4. Insert needletip to the bottom of the post hole and inject material with slow steady pressure.



5. Continue filling by injecting and slowly withdrawing the needletip.



6. If desired, light-activate Encore D/C to accelerate the set. Allow material to fully cure and then cut and shape the core. The result is a solid, securely bonded post and core.

Seamless single-dose. Delivery System.

The new single-dose Encore D/C MiniMix kit contains 36 cartridges. Each cartridge has two mixing nozzles and our exclusive needletip. That's 72 core buildups. The product is dual-cure, for fast light-activation. Plus, the smaller size and ease of use will save you valuable chair time and reduce patient stress.

ORDERING INFORMATION

Encore D/C MiniMix

Contains 36 single-dose cartridges (0.5mL net ea.) and 72 mixing nozzles.

REF 310254 Natural Kit

REF 310255 Contrast Blue Kit

Shade Reference



Natural



Contrast Blue



Encore D/C MiniMix Specifications

Comprehensive Strength	222 Mpa
Flexural Strength	110 Mpa
Diametral Tensile Strength	48 Mpa
Light-activated Depth of Cure	2mm 40 Seconds

Connexio®

centrix®
Making Dentistry Easier.™

CENTRIX Connexio® Self-Etch Bonding System for

CENTRIX
Encore® D/C
MiniMix®

Ideal for Root Canal Cementation



NEW 7th-Generation Bonding System

Connexio is a dual-cure, self-etching bonding system which is the perfect complement to Encore D/C. It creates a strong resilient bond quickly and easily.

Reinforced with nano-particles, Connexio is indicated for use with direct dual or self-cure composite restorations and core buildups including fillings, inlays, onlays, crowns, bridges and posts.

Connexio is packaged with two parts: the self-etching dentin, enamel bonding agent and the dual-cure activator. It tolerates residual moisture and can be used with a variety of light-, self- and dual-curing composites.

Connexio firmly bonds tooth to composite or resin cements for permanent, tight margins. Fast-acting and easy to apply, Connexio reduces post-operative sensitivity – making it the perfect choice for both patient and doctor.



Connexio Features:

- Chemical-curing with additional activator for areas inaccessible with a light
- Adhesive core build-up
- Fixing of root pins/posts with dual-curing or self-curing composite cements
- Universal application
- Same adhesive properties as total-etch bonds

TEST RESULTS

Tensile dentin bond strength:	39.3 MPa
Shear enamel bond strength:	24.5 MPa
Marginal enamel seal:	97%
Marginal dentinal seal:	99%

Tempit[®]

Unit Dose Temporary Materials



Here's why tempit is easy to use:



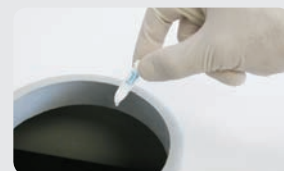
STEP 1 Place tip into dispensing gun.



STEP 2 Remove cap.



STEP 3 Inject directly into prep. Tempit is moisture activated and sets in 5 minutes. Tempit L/C and Ultra-F are light activated.



STEP 4 No cleanup needed. Just discard.

Temporary filling material, one delivery system

Three unique temporary filling materials, one delivery system. Just as permanent restorations demand specific materials for different needs, temporary restorations also have different requirements, demanding the right material for each case. Whatever your need, Centrix offers 3 specific and proven temporary filling material formulas, providing optimal results in any clinical situation.

- Endo access cavity sealing - Tempit[®] is moisture activated, expanding slightly to completely seal any opening
- Inlay/onlay indirect restorations - Tempit[®] L/C sets firm but flexible so it can be plucked off the restoration with an instrument; no bur required
- Long term restorations - Tempit[®] Ultra-F, harder wearing for long term cases, bruxers. Also ideal as a tooth-colored restorative material for deciduous teeth (prior to exfoliation).

Select the right Tempit formula for your case and inject into the prep. Requires no mixing, spatulation or messy pre-filled unit dose tips so it can be delivered directly, precisely. Tempit saves time, reduces waste and provides the right filling material for each patient's need and every temporary application.

- No mixing, no mess, no cross-contamination
- Unit-dose syringe tips for easy, precise placement, maximum asepsis
- Sets in minutes, easy to remove on return visit
- Works in any Centrix C-R[®] or similar syringe
- Non-eugenol formula

Applications and Features:



Short-Term Temps

Tempit

Moisture-Activated Temporary Filling & Sealing Material

- Ideal for endo access openings and short-term temporaries
- Moisture-activated, sets in 5 minutes or less
- Expands slightly when set, seals out microleakage and bacterial ingress
- Contains calcium sulphate and zinc oxide



Medium-Term Temps, Indirect Restorations

Tempit L/C

Light-Activated Temporary Material for Inlays & Onlays

- Perfect for indirect restorations, inlays/onlays
- Seals implant screw access openings
- Sets firm yet flexible
- Easily removed with an explorer without damaging the margins
- Light-activated, sets in 40 seconds or less
- No etching or bonding agent required

NoMIX®

Temporary Cement for Crowns & Bridges

Single Part Moisture Activated Temporary Cement.

**Working time 5 minutes.
Final set time 15 minutes.**

**Professional
Grade**

- **No Mixing**
- **Moisture-activated formula** — no need to dry the tooth; reduces post-operative sensitivity
- **Prefilled 1mL syringe** — perfect for easy, direct application onto restorations
- **0.5ml Unit-dose, take-home applicators** — take-home security; helps eliminate those late-night emergency calls
- **No eugenol** — won't inhibit resin materials from setting

Active Ingredients:

- **Potassium sulphate**— desensitizing effect on the tooth
- **Zinc Oxide** — anti-bacterial ingredient.
- **Calcium sulphate**— expands slightly for minimal leakage

NoMIX Technique:

- Leave prepared tooth moist. Do not dry.
- Lightly cover the internal surfaces of the dry restoration with NoMIX Temporary Cement.
- Place restoration and check for fit. Have patient bite down.
- Wait 5 minutes. Cement will be set enough to gently remove any excess cement. Clean the interproximals by knotting a piece of floss and pulling through (NOT up).
- The cement will fully set in 15 minutes. Instruct the patient not to eat for at least 1 hour.

NoMIX® Temporary Cement is easier for you... and your patients.

**In Surgery****Take Home**

NoMIX is the only pre-mixed, single component, temporary cement available. It eliminates the mixing, spatulation and messy cleanup of traditional temporary cements. Yet NoMIX provides superior retention. Pre-loaded in syringes enables fast, exact placement onto restorations. And our new NoMIX take-home applicators are perfect for patient use – at home or on-the-go; they help eliminate those late night emergency calls.

Clinisept+ Dental

More than just a mouthwash

Clinisept+ Dental Mouthwash removes 99.99% of the bacteria that causes gum disease and tooth decay. Safe for use on sensitive mouth and gums.

- ✓ No 'arctic blast' or sensitisation
- ✓ No staining
- ✓ No chlorhexidine, alcohol or peroxide
- ✓ **80 ppm and Neutral p.H 7.0**
The perfect balance
- ✓ Non - cytotoxic
- ✓ Hypo - allergenic



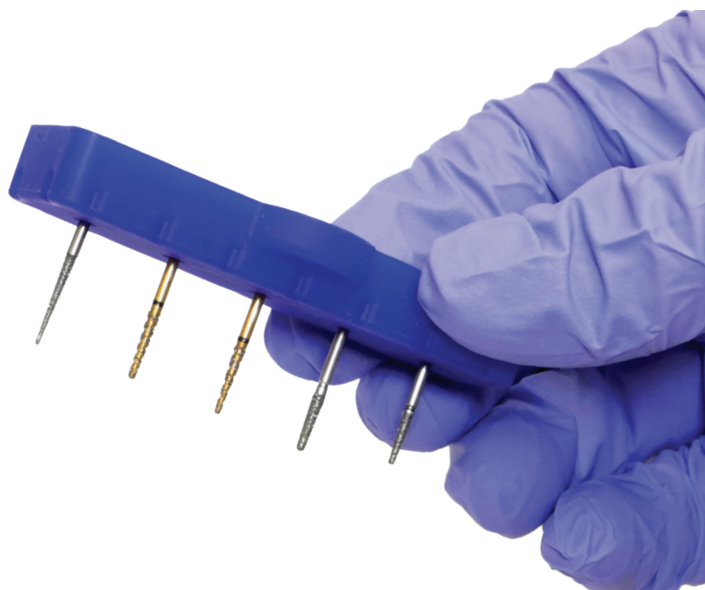
 Call for more
Information

BurButler Autoclavable Silicone Bur Block

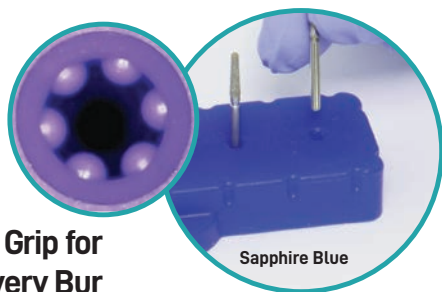
Even When Dropped Burs Don't Fall Out!

The BurButler is a touchy, feely product developed by a dentist. Little pressure is needed to secure your burs safely.

Use the same pressure to take them out. A grip so reliable that burs aren't dislodged even in the washer disinfector!

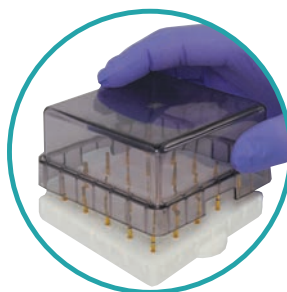


No Magnets - No Tricks
Clever tapered "soft" holes lightly, but adequately grip the end of the bur.

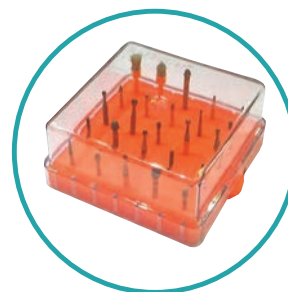


Grip for Every Bur

The Snug Fitting Lid
goes on and off easily and with one hand



The Contents
are clearly visible through the lid



5 colours:

Amber Orange, Diamond White, Ruby Pink, Amethyst Purple, Sapphire Blue



5 Hole with standard lid FG/RA

Shown in Amber Orange	UBB050R	£19.40
-----------------------	---------	--------



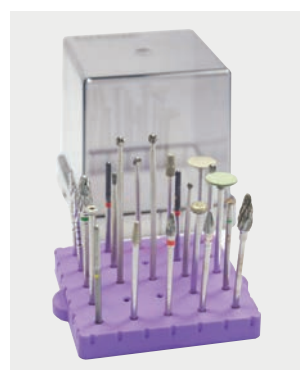
10 Hole with standard lid FG/RA

Shown in Diamond White	UBB10WH	£29.20
------------------------	---------	--------



25 Hole with standard lid FG/RA

Shown in Ruby Pink	UBBTLPI	£46.00
--------------------	---------	--------



25 Hole Tall Lid FG/RA

Shown in Amethyst Purple	UBBTLPU	£46.00
--------------------------	---------	--------

Laminate Butler

Organise and deliver restorative components, stains and glazes with ease!



Organise implants components



Layout shades and glazes



Organise veneers, crowns & bridges

Laminate Butler enables the practice to lay out all the components in the correct order on a sterile autoclavable silicone palette prior to the patient's appointment.



An autoclavable tray with an autoclavable lid to allow the systematic sterile presentation of all your restorations.

LaminateButler

Black Tray for organising implants crowns & veneers	ULBLK00	£64.00
---	---------	--------

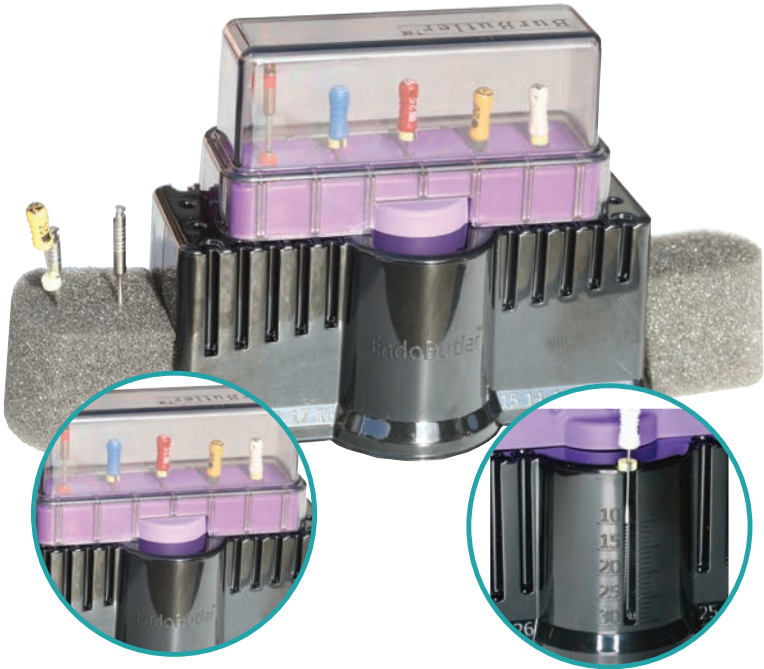
Endo Butler

Take the hassle and risk out of endo instrument organisation!

EndoButler enables you to pre-prepare the instruments in a simple, safe and efficient manner taking the hassle and risk out of endo file organisation.

Available in Diamond White, Ruby Pink, Amethyst Purple, Sapphire Blue and Amber Orange for colour-coded storage of different types of endo instruments.

Pack of 25 single use foam inserts can be split into 50 singles for even greater economy.



EndoButler

EndoButler 5 Hole Base and Lid Blue	UEB05BL	£80.00
Amber Orange, Diamond White, Ruby Pink, Amethyst Purple, Sapphire Blue		

Autoclavable transparent closed "soft fit" lid enable safe and efficient set-up and pre-sterilisation of instrument with clear visibility at all times..

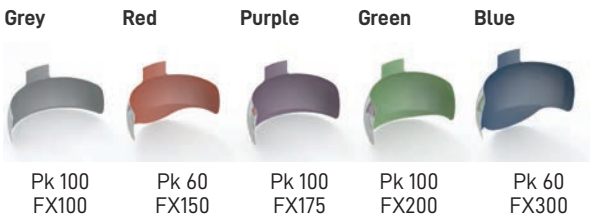
Recessed measuring gauge facilitates easy and precise "end stop" measurement and positioning for working length.

Garrison 3D Fusion Clamps

Composi-Tight Contacts

3D Fusion™ Matrices

The full curve 3D Fusion™ Matrices are naturally contoured to help achieve anatomically correct contacts and emergence profiles on Class II restorations. The colour-coded non-stick surface ensures correct matrix selection and easy removal.

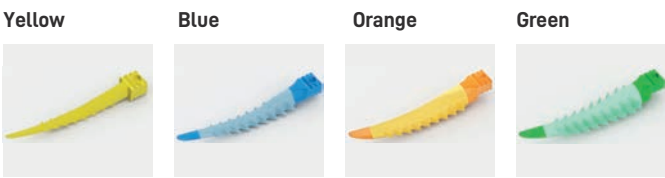


3D Fusion™ Matrices

Composi-Tight Slick Bands Assorted Pk420	UF3DMBK	£435.00
Composi-Tight Slick Bands Ex Lge Blue or Red Pk60	Red FX150 Blue FX300	£96.00
Composi-Tight Slick Bands Lge Purple, Green or Grey Pk100	Purple FX175 Green FX200 Grey FX100	£96.00
Composi-Tight Ring Replacement Forceps	UCOMPRF	£72.00
Composi-Tight Slick Band Margin Elevation Pk50	UCSBME0	£49.00

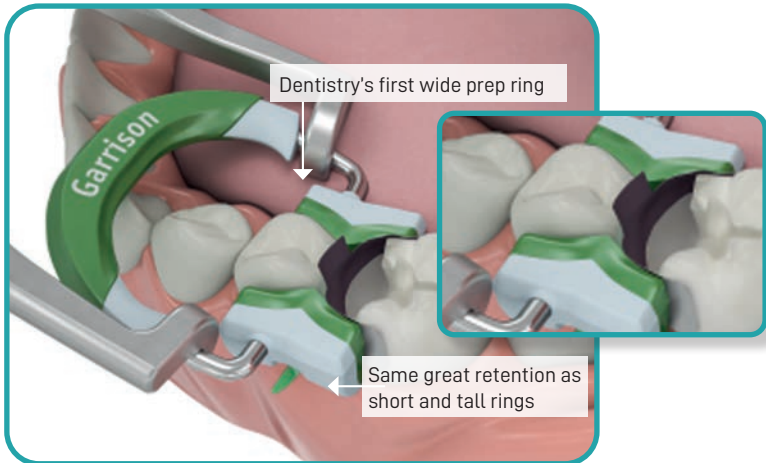
3D Fusion™ Wedges

3D Fusion™ Wedges incorporate Garrison's exclusive Soft-Face™ technology to adapt in ways that hard plastic, or even hollow plastic wedges just can't do. Seal up those root concavities and tooth irregularities so your preps are kept clean and dry. Soft, flexible fins easily fold down to glide in during insertion, then spring back out to secure the wedge.

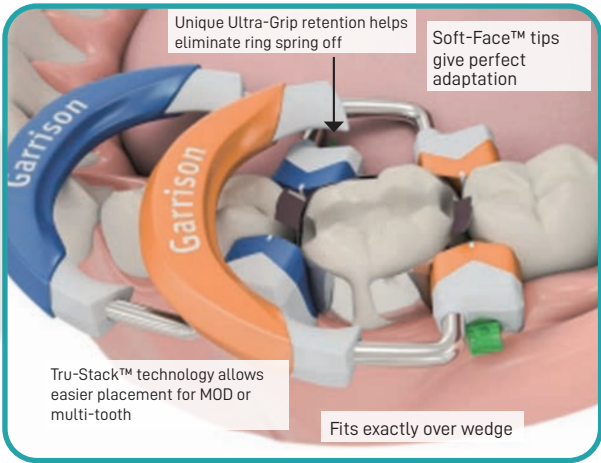


3D Fusion Wedges

Fusion	Kit	UF3DW00	£100.00
Fusion 3D Wedge X-Sml(Y), Sml(B), Med(Or), Lge(G) Pk100		UF3DWY1 - YELLOW UF3DWB1 - BLUE UF3DW01 - ORANGE UF3DWG1 - GREEN	£51.00
Fusion 3D Wedge X-Sml(Y), Sml(B), Med (Or), Lge(G) Pk50		UF3DWY5 - YELLOW UF3DWB5 - BLUE UF3DW05 - ORANGE UF3DWG5 - GREEN	£31.00



Dentistry's first wide preparation ring!
Greatly simplifies these tougher cases
— even with a missing cusp!



The same great retention and adaptation as the short ring (blue) and tall ring (orange)



Composi-Tight 3D Fusion Kit

Kit	UF3DKT0	£473.00
Contents: 1 of each composi-tight Rings: Short, Tall & Wide 80 x 3D fusion Full Curve Matrices, 70 x 3D Fusion Wedges, 1 Ring placement forceps		

Kit Contents:

- 1 x Each Composi-Tight
 - Tight 3D Fusion
 - Short
 - Tall
 - Wide Ring Refill
 - 80 x 3D Fusion full curve matrices
 - 70 x 3D Fusion Wedges
 - 1 x Ring Placement Forceps

Anterior Matrix System:

Anterior restorations with confidence
For Class III and IV Indications

- Ideal anatomically curved matrix
- Thin, yet firm for improved interproximal contact without deformation.
- Curved wedges give a tight seal at the cervical margin
- The T-shape allows the wedge to sit deeper avoiding black triangles.

Fusion Anterior Matrix System Kit	UFAMS20	£139.00
-----------------------------------	---------	---------



FitStrip

For easier, quicker interproximal contouring and finishing.

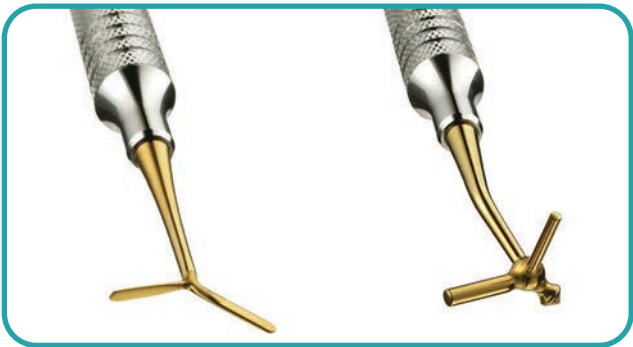
- Unique removable handle:
 - Ease of use
 - Patient comfort
 - Enhanced visibility
- Adjustable: straight for IPR, curved for finishing
- Single, double sided and serrated options
- Durable: can be reused and autoclaved

FitStrip IPR Kit	UFSIPRK	£163.00
------------------	---------	---------



5-in-1 Multi Function Instrument.

- Five instruments in one for improved working efficiency.
- Thick stainless steel handle for improved ergonomics and longevity
- Titanium nitride coated for non-stick and durable



Composite Instrument TN009 Garrison	UGCI009	£104.00
-------------------------------------	---------	---------

EVE Polishing

Step Polishing System

Diacomp® Plus *TWIST*



Achieves a high lustre quickly!

The special geometry of TWIST polishers enables you to polish any surface structure with just one instrument; resulting in a high-shine and significant time saving. Can be autoclaved in excess of 25 times.

- **Extraordinary durability**
- **Preservation of the surface structure**
- **Reduced heat generation**

Diacomp® Plus *OCCLUFLEX*



Unique occlusal polisher

OCCLUFLEX polishers were specifically designed to achieve high-quality results even on the occlusal surface. The twisted bristles reach even deep fissures.

- **Designed specifically for occlusal polishing**
- **Applicable without polishing paste**
- **Easily reprocessable brush shape**

PINK PRE POLISHER - smoothes the restoration after using a gross anatomy trimmer bur.

GREY FINE POLISHER - for high shine polishing.

Both ranges are diamond impregnated in a flexible silicone. Whilst it's best to avoid the soft tissue, accidental contact will not cause trauma. Light pressure is the key - using too much pressure will not give the best possible results and will prematurely wear down the polisher. Water is recommended to avoid excessive heat which may lead to pulpal necrosis.



Diacomp Plus Occluflex Kits & Refills

Diacomp Plus Twist Kits & Refills

Diacomp Plus TWIST 14mm Kit RA342 3 x pre-polisher, 3 x high shine polisher.	UEDC342	£60.00
Diacomp Plus TWIST 10mm Kit RA343 3 x pre-polisher, 3 x high shine	UEDC343	£55.00
10mm RA Fine or Medium Grit	Singles Pack 10	£9.50 £91.00
14mm RA Fine or Medium Grit	Singles Pack 10	£10.30 £99.00

Diacomp Plus OCCLUFLEX 10 Kit RA344
Contents: 1 x Each Diacomp Plus Occluflex Pre-polisher, Occluflex High shine polisher, Diacomp plus pre-polishers flame, cup, disc Diacomp plus high shine polishers flame, cup, disc.

Occluflex RA Fine or Medium Grit

Diacomp Plus RA
Small cone, flame, cup, disc, large cone

UEDC344 £51.00

Singles
Pack 10 £11.80
£112.00

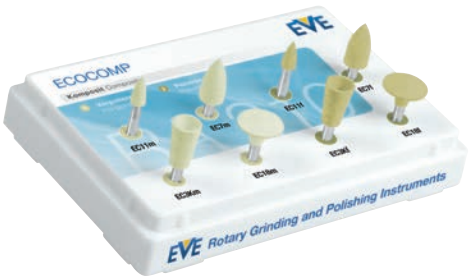
Singles
Pack 10 £8.00
£76.00

EVE Polishing Tips

For efficient polishing of composite surfaces

Ecocomp

Silicon carbide abrasive in two grit sizes
Four shapes
Hard bonding for durability
Operating speed 7000 to 10000 rpm



Ecocomp Kit & Refills

Ecocomp Kit RA210 1 each 11, 3, 7, 18 of each grit	UEEC210	£12.50
Refills Fine or Medium	Pack 10	£13.70
	Pack 100	£103.00

For polishing porcelain, composite and metal occlusal fillings

Diabrush

No need for polishing paste
Heat resistant, autoclavable polyamide fibre
Operating speed 10000 rpm. maximum

Diabrush Single	WTD1 WZD1 WSD1	£4.40
Diabrush Pack of 10	WTD1 WZD1 WSD1	£41.50



For polishing porcelain, composite and metal occlusal fillings

Evebrush

Fibre with silicon carbide grit
No need for polishing paste
Operating speed 10000 rpm. maximum

Evebrush Single	WT1 WZ1 WS1	£3.60
Evebrush Pack of 10	WT1 WZ1 WS1	£33.00



EVE Polishing Strips & Pastes

For interdental adjustment of porcelain, composite, metal and enamel

Diastrips



3 of each grit size

PERFORATION REMOVES THE CUT MATERIAL



2.5mm x 150mm



4mm x 150mm

Available in fine, medium and coarse

Diastrip Kits 2.5mm Pack of 9

UEDS102

£43.00

Diastrip Kits 4mm Pack of 9

UEDS104

£43.00

Eve Bracket Plus Kit Debonding

- For removal of remnants after debonding
- Does not harm the enamel
- PROPHYCLEAN® is recommended for removal of hard bracket remnants



BRP11
3x7.5mm

BRP7
5x10mm

BRP3
5.5x8.5mm

BRP6
10x0.7mm

?????

?????????

£????

PROPHYCLEAN® Tooth Cleaning, Debonding

- Removes calculus and stains
- Special abrasive prevents damage to the enamel
- For mechanical prophylactic treatment
- Fibre free
- Blue option for heavy stains



8700 2,35x9mm
8702 2,35x7mm
8703 2,35x7.5mm
8711 3x6.5mm



8800 2,35x9mm
8802 2,35x7mm
8803 2,35x7.5mm
8811 3x6.5mm



8721 10x0.21mm
8741 14x0.21mm



8821 10x0.14mm
8841 10x0.14mm

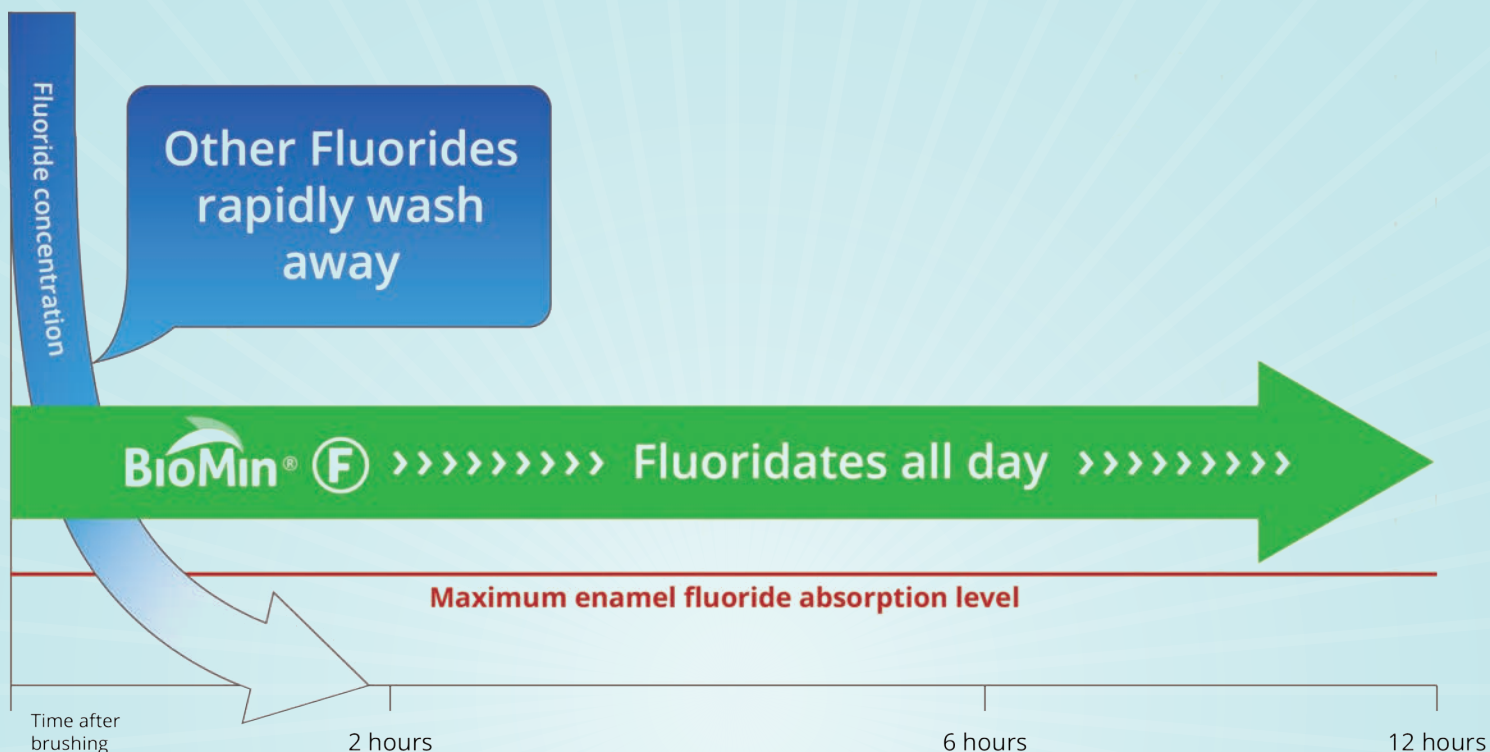
?????

?????????

£????

BioMin®

"Fluoridates all day others just wash away"



Armour for Teeth

- Daily use fights tooth decay
- Helps reduce bleaching sensitivity
- Replaces lost minerals to improve overall oral health
- Protects against enamel erosion
- Eliminates the pain of dentine hypersensitivity
- Oral Health Foundation and FDA Approved



"Offer your patients a real proven fluoride therapy, not just a toothpaste."





Armour For Your Teeth



BioMin F represents a quantum leap in toothpaste technology. Uniquely, it provides a continuous and controlled supply of Fluoride, Calcium and Phosphate for 8-12 hours after brushing to build a strong protective layer of fluorapatite on teeth. In contrast, other Fluoride toothpastes are washed away by saliva within 90 minutes.



Here's what BioMin™ F does

- Fluorapatite developed from BioMin F is 10x more resistant to acid attack than hydroxyapatite tooth mineral.
- BioMin F remineralises deep inside enamel lesions.
- BioMin F makes your teeth shine and feel clean.
- BioMin F is safe for everyone - children and adults alike.
- BioMin C Fluoride-Free Toothpaste.
- BioMin C contains Calcium Phosphate

8 x 75ml Tubes	UBIOMINF	£43.85	8 x 75ml Tubes	UBIOMINC	£43.85
1 x 18ml Tubes	SAMBIOS	£2.25	1 x 18ml Tubes	SAMBIOS	£2.25

Armour For Childrens Teeth



BioMin F Kids Melon 50ml

1 x 50ml Tube	UBIOMKMSP	£5.38
12 x 50ml Tubes	UBIOMKMM	

Bio MinF Kids Strawberry 37.5ml

1 x 37.5ml Tube	UBIOMKSSP	£5.38
12 x 37.5ml Tubes	UBIOMKMS	£44.75



Boutique Whitening

Elegant and Effective tooth whitening for day or night application

Boutique Whitening		
Night 10% or 16% Kit 4 x 3ml	UBCK164	£22.50
Day 6% Kit 4 x 3ml	UBTK006	£22.50
Tray Voucher, Postage + 4 x 3ml Kit	UBTTRAY	£47.99
Pillow Boxes	1 x 3ml	£5.00
	2 x 3ml	£10.00
	3 x 3ml	£15.00

- By Day 6% Hydrogen Peroxide
- By Night 10% or 16% Carbamide Peroxide



Customised insert with your practice logo. Ask for details.



3Dalign Clear Aligners



Quicker and more patient friendly than other systems

- Almost invisible.
- Treatment can take as little as 10 weeks.
- Fabricated using the most advanced materials.
- Sculpted to the patient's teeth - less irritation of the gums and mouth.
- No screws or wires.
- Can be removed for eating, drinking and cleaning - the patient's oral hygiene is not compromised.
- No specialist Orthodontic Training required.
- VAT exempt.

Choice of treatment options to suit individual patient requirements

Sterisil Straw V2

Waterline Disinfectant

10 Minutes Keeps You Biofilm-free for a Year!

No Tablets, No Liquids

Shock Treatment

Initially the Sterisil Straw performs an intense treatment to ensure your unit is Biofilm-free from the outset!

Antibacterial Tubing & Bottle

The Sterisil Straw will work alone. However by adding the Antimicrobial Tubing and Bottle even greater protection is achieved. A continuous flow of Sterisil's antimicrobial component is supplied within the tubing and bottle during the time the system is idle.

Kind to Your Unit And Your Staff!

No need to empty bottles, purge and air-dry lines at night. Sterisil products do not harm your equipment unlike some products including Silver Nitrate based systems. With no adverse effects on composite nor do they dissolve amalgam. They do not contain oxidisers, iodine or chlorine which have been shown to increase mercury discharge.



WATER FLOW TO THE MAX

The Sterisil Straw V2 now has bottom relief gaps to prevent flow restrictions

Sterisil Straw V2

Sterisil Straw 365 Day Municipal	USSV2MW	£195.00
Sterisil Straw 365 Day Distilled	USSV2DW	£195.00



FDA Cleared and EPA registered to produce CFU per ml HPC purity 50 times below the ADA and CDC guidelines.

Municipal water and distilled water models available.

"With water treatment being a vital and important part of the everyday routine in our practices we were thrilled to learn of a safe, effective and easy product that we could introduce with minimal impact and maximum benefit.

We have 73 surgeries in total across Smile Dental Care, so obviously for us this had to be something that everyone could use with ease and more importantly be managed and logged in accordance. Changing over to Sterisil Straw could not have been easier, we simply cut the existing tubing to length and inserted the straw. I then had peace of mind all my sites were compliant for 365 days and with the extra benefit of saving money over the year."

Pip Dhariwal Owner



"As a busy multi-site practice manager, inserting the Sterisil Straws gave me great peace of mind as I knew the water treatment was always taken care of.

It's very busy in surgery with rotas, stock management, arranging cover, CQC and customer facing so to know the water treatment was in hand and passing the relevant tests was a great relief."

Monica Faira | Practice Manager

would you drive in the dark with one headlight



Why Risk Shadows in Surgery

Dr.Kim Shadowless Headlamps

Properly illuminate your working zone. The combination of clarity, minimal weight and optimum working position facilitate comfort and efficiency.

- Properly illuminate your working zone
- Reduce Eye Strain
- Comfortable when working
- Lightweight
- Rechargeable
- Auto OFF Function
- Adjustable Brightness
- HD Camera option available
- Loupes



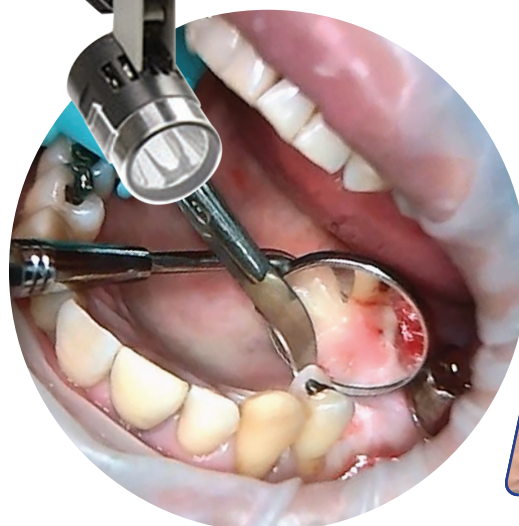
optional extras



HD Camera Option



Travel Bag



Headlamp

UDKHL50

£720.00

One Light
Casts a Shadow



Two Lights
No Shadow





GUIDED BIOFILM THERAPY

Get it all from
Trycare

01 ASSESSMENT AND INFECTION CONTROL ASSESS EVERY CLINICAL CASE AND IMPLEMENT HYGIENE MEASURES

- Start by rinsing with BacterX® Pro mouthwash ►Assess teeth, gingiva and periodontal tissues
- Access implants and peri-implant tissues probing and screening protocol.

08 RECALL

HEALTHY PATIENT = HAPPY PATIENT

- Schedule recall frequency according to risk assessment
- Ask your patient if he or she liked the treatment.

02 DISCLOSE

MAKE BIOFILM VISIBLE

- Highlight to patients the disclosed biofilm and their problematic areas with EMS Biofilm Discloser ►The color will guide biofilm removal
- Once biofilm is removed, calculus is easier to detect

07 CHECK

MAKE YOUR PATIENT SMILE

- Do a final check for remaining biofilm
- Ensure calculus is fully removed
- Accurately diagnose caries
- Protect with fluoride

03 MOTIVATE

RAISE AWARENESS AND TEACH

- Emphasize prevention
- Instruct your patients in oral hygiene ►EMS recommends Philips Sonicare toothbrushes, interdental brushes and Airfloss Ultra

06 PIEZON® PS

REMOVE REMAINING CALCULUS

- Use the minimally invasive EMS PIEZON®PS Instrument supra- and subgingivally up to 10mm
- Clean >10mm pockets with mini curette
- Use EMS PIEZON® PI Instrument around implants up to 3mm subgingivally and on restorations

04 AIRFLOW® MAX

REMOVE BIOFILM, STAINS AND EARLY CALCULUS

- Use AIRFLOW® Max for natural teeth, restorations and implants
- Remove biofilm supra- and subgingivally up to 4mm using Airflow® PLUS 14µm Powder
- Also remove biofilm from gingiva, tongue and palate ►Remove remaining stains on enamel using AIRFLOW® Classic comfort powder

05 PERIOFLOW®

REMOVE BIOFILM IN > 4 TO 9MM POCKETS

- Use AIRFLOW® Plus Powder on natural teeth in deep pockets and root furcations and on implants ►Use new and slimmer PerioFLOW® Nozzle



Guided Biofilm Therapy (GBT) from EMS
Evidence based protocol for biofilm
management on teeth, soft tissue and
implants.

To Remove Biofilm You Have to See It!

Pre-soaked pellets mean less mess and easier application. Two-tone allowing the clinician to easily identify young (red staining) and mature (blue) biofilm.

Easily removed from the teeth and soft tissue with Airflow® and Piezon®.



sold individually

250 Pellets	UEMSBFD	£45.00
-------------	---------	--------

AirFlow® Powder Plus

The first high-tech powder to remove biofilm and early calculus in a minimally invasive way!

EMS AIRFLOW® PLUS POWDER ERYTHRITOL²



14µm erythritol based prophylaxis powder for use on all surfaces in the mouth both supra and subgingivally.



1 x 400gm	UAFPP01	£100.00
4 x 400gm	UAFPP04	£355.00

Piezon Instrument Tips



A INSTRUMENT

To remove supragingival deposits in all quadrants

1 x tip SAT0099 £80.00



P INSTRUMENT

To remove supra- and subgingival deposits in all quadrants

1 x tip SAT0100 £89.00



PS INSTRUMENT

For fine scaling and root debridement

1 x tip SAT0101 £115.00

ALL OF THE ABOVE INCLUDE COMBITORQUE



PI INSTRUMENT

For the effective and gentle cleaning of implants and corresponding restorations

4 x tips UEMSICT £109.00

Air Flow

EMS⁺
GBT

Classic Comfort Powder

Reduced 40µm particle size allows for effective supragingival polishing and stain removal, with enhanced comfort for the patient.

Sodium bicarbonate based with three flavours plus a neutral flavour.

Available in Cherry, Lemon, Mint, Neutral

4 x 300gm

UAFHPCH - Cherry
 UAFHPLM - Lemon
 UAFHPMT - Mint
 UAFHP00 - Neutral
 UAFHP00 - T-Fuitti

£99.00



triple
bristle

Triple-sided Sonic Toothbrush

**Three times
the action**

**Three times
the cleaning**

- Unique triple-sided brush head with advanced sonic energy
- 3 speed settings with autotimer
- Long-life battery with charging indicator

Also available to fit Philips Sonicare® units – DiamondClean, Flexcare+, Healthywhite+, 3 Series Gum Health, 2 Series Plaque Control, Sonicare Kids

© 2023 Trycare Limited. All rights reserved.
All prices exclude VAT and are correct at the time of print.
Trycare Limited reserves the right to change prices without prior notice and correct clerical omissions and errors in this publication.



Max Babiner, DMD

Dentist created,
Dentist approved



**PHILIPS
sonicare**

**Convert your
Philips Sonicare®
with a triple
bristle head**

 **Call for more
Information**



EM-12 L electric motor

Functionality meets comfort



Why choose an electric motor with speed increasing handpiece from W&H?

- › Consistently high power
- › Maximum control over speed, torque and precision
- › Optimum cutting speed with lower intensity aerosol dispersal
- › Excellent illumination thanks to LED technology
- › Ergonomically designed to improve patient and user comfort
- › **Flexible plug and play device**
- › **Helps to reduce aerosol generation**

**Made in
AUSTRIA**



FS 36436



Synea Vision Turbines with 5 ring LED will brighten up your dentistry. For ultimate high-end quality and technology, discover the Synea Vision range with unique innovations.

Advantages at a glance:

- Uncompromising quality
- Optimum cooling, with 5 port spray
- High quality ceramic bearings for absolute reliability
- Ergonomical, light weight, quiet design for comfortable use
- Scratch resistant coating to protect your handpiece
- Award winning shadow-free illumination for exceptional visibility, with perfect positioning of LED+ optics
- The smallest turbine head currently available with 5 hole spray, ideal for minimally invasive treatments



TK-94 L
Single LED Head
Head Ø 9mm



TK-97 L
5 Ring LED+
Head Ø 10mm



TK-98 L
5 Ring LED+
Head Ø 11.5mm



TK-100 L
5 Ring LED+
Head Ø 13mm



All W&H turbines have hygienic head anti-retraction systems to prevent cross infection

L = Ring LED+, ceramic ball bearings, coupling system Roto Quick

Also available for Multiflex system. with single LED.

Please ask for details.

"The Synea Vision Turbine with 5 ring LED is perhaps one of the best handpieces I have ever used."



"I have been using W&H handpieces consistently for over 8 years. I was first recommended these handpieces by a restorative colleague and have tried other brands but now only use W&H within my practice. The Synea Vision turbine with 5 x ring LED is perhaps one of the best handpieces I have ever used. This is attributed to its light weight, excellent torque and superb light source, especially in difficult to see areas in the posterior part of the mouth. I find it of tremendous value in my daily orthodontic practice."

Dr Sunil Hirani
Smilelux, Milton Keynes

TRYCARE FINANCE AVAILABLE!

A range of financing is available spread over 2, 3 or 5 years
ASK FOR DETAILS



W&H Handpieces

Syneca Fusion - A synthesis of design, technology and value

Syneca Fusion offers outstanding performance, excellent value, proven quality and reliability with uncompromising user comfort, effective grip and optimum service life.

syneca FUSION

Syneca Fusion turbines offer exceptional field of illumination with LED+, providing daylight quality light to maximise contrast and colour rendering,



Syneca Fusion Non-optic handpieces also available

Alegra Handpieces

Excellent quality non-optic handpieces offering powerful and reliable, ergonomically designed user comfort.



Proxeo

W&H Handpieces



High Quality Polishing the Professional Way

Proxeo WP-66W
Twist Latch Short System

Compact prophylaxis head and attachment design ensures optimum access and visibility. Unique triple seal head system stop ingress of paste etc, so improves infection control and extends the working life of the handpiece.

Cups designed to keep paste in the polishing area.



Proxeo WP-64 MU

- > Prophyl contra-angle 4:1
- > Without light
- > For universal screw-in and snap on (adaptor) cups and brushes.



Call for Current Promo Prices

Handpiece WP-66W	Each
Prophy Cups Light or Dark Green	Pack of 144
Prophy Brushes Soft Clear	Pack of 144

Call for Current Promo Prices



W&H Air Motors

W&H air motors offer high motor power and a long lifespan.

Power can be controlled smoothly in both forward and reverse drive.

These quiet, lightweight motors are available with or without light and internal spray.

Call for Current Promo Prices



Air Motor
AM-25 LT
Optic with internal spray
Midwest for use with
RQ-24 coupling



Air Motor
AM-25 A BC/RM
Non-optic with internal spray
Borden/Midwest
Fixed Connection



Air Motor
AM-25 BC/RM
Non-optic without internal spray
Borden/Midwest
Fixed Connection



W&H Prophy

Proxeo Air Scaler

Proxeo Aura



The Proxeo Aura Air Polishing System is a real all rounder. Soft deposits and stains can be removed thoroughly and efficiently without changing the handpiece. The powders, handpiece and spray heads work together perfectly and allow thorough and atraumatic supragingival and subgingival cleaning

Connections available for Rotoquick, Multiflex, NSK and Sirona

Proxeo Twist



Proxeo Ultra



Fast, gentle, powerful. The Proxeo Ultra scaler with the integrated spray and LED Illumination is ideal for the removal of plaque and calculus as well as cleaning root surfaces. The result: your patients feel better in general and more self-confident thanks to their clean teeth surfaces.

Compatible with pacemakers as tested by Graz University of technology

- Stepless regulation
- Large optic outlets
- Large tip range

The Proxeo TWIST LatchShort Polishing System is a particularly smart solution for Prophy polishing: The small head with the optimally matched Prophy Cups significantly reduces the working height.

You gain as much as four millimetres compared to standard latch systems.

Main advantages at a glance

- Optimum access thanks to lower working height
- Better visibility thanks to the smaller head
- Change at the push of a button
- Long service life owing to sealing system
- Ideal speed for gentle and efficient polishing/cleaning
- Ease of maintenance and hygiene-friendly
- Thermodisinfected and sterilisable

 **Call for Current
Promo Prices**

 **Call for Current
Promo Prices**

W&H

Electric Motors



MF-100 with EM-12 L electric motor
Functionality and Safety meet Comfort

Why choose an electric motor with speed increasing handpiece from W&H?

- Consistently high power
- Maximum control over speed, torque and precision
- Optimum cutting speed with lower intensity aerosol dispersal
- Excellent illumination thanks to LED technology
- Ergonomically designed to improve patient and user comfort
- Flexible plug and play device
- Helps in the reduction of aerosol generation



**Call for Current
Promo Prices**



W&H

Couplings

Rotoquick



The Roto Quick system coupling is a multi-faceted system interface, which connects any standardised turbine tubing to any W&H turbine, air motor or air scaler with Roto Quick connection.



Roto Quick Couplings Non-Optic



RQ-03
Borden 2(3)-hole



RQ-04
Standard 4 hole



RQ-14
Standard 4 hole adjustable spray



Roto Quick Couplings Optic



RQ-24
Standard 6 hole



RQ-34
Standard 6 hole adjustable spray



- led
- without light

with light

integrated spray

- external spray

without spray

sterilizable



W&H Decon Equipment



"I did my research when it came to choosing equipment for my new decontamination room and W&H came out on top"



"I choose to work with W&H because the company has a very good reputation in the profession. I did my research when it came to choosing equipment for my new decontamination room and W&H came out on top. I selected the ThermoKlenz washer disinfecter, the Lisa autoclave and the Assistina handpiece maintenance machine.

A year later I have been very pleased with the performance of all products - they all do what I need them to. In fact, a recent CQC inspector commented specifically on the impressive decontamination room set up, which they said even exceeds the standards expected within a hospital!"

Dr. Paul Wilson Bath Dental Clinic

Assistina Twin dual chamber system

W&H Decon Equipment



Handpiece Maintenance in Record Time -10 seconds per handpiece!

Achieve consistent and efficient handpiece lubrication. The Assistina Twin speeds up your handpiece care and maintenance process as you can connect a second handpiece while the first is being maintained. The HEPA filter system effectively removes aerosol.



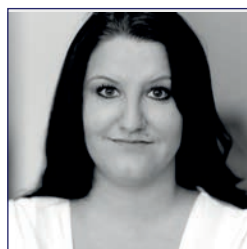
Please ask for details of our monthly promotions

Assistina Twin Handpiece Maintenance Unit

UWHATU0

£POA

Now I have certainty that my handpiece can be reprocessed between treatments without additional waiting time for me or my patients. It's a win win situation



The dual chamber means I only need a fraction of the time for the maintenance of the handpieces. It is extremely quiet and looks great too!

Pouch Sealer

W&H
Decon Equipment



Seal2 Universal Pouch Sealing System

A Perfect Seal in 2 Seconds!

Produces 12mm seals in just two seconds.
Roll holder can be wall mounted.
Electronic temperature regulator guarantees perfect sealing and peace of mind.



Ensures a fully
hermetic seal



W&H
Decon Equipment

LISA Vacuum B Sterilizer

Lisa Vacuum B-Type Sterilizer

Efficient, Reliable, Time-Saving
& Easy to Use

- Running your daily tests before you arrive at work
- Running the shortest cycle times for specific loads from only 13 minutes
- Easy to use intuitive touch screen navigation system
- Impressive connectivity and real time remote monitoring via the Lisa App
- Exceptional traceability thanks to the WiFi connection allowing automatic recording of cycle data to the practice computer
- Preserving the life of your dental instruments with Lisa's ECO dry+ system
- Automatic load size detection



CONNECTIVITY

Can be pre-programmed to run vacuum and helix tests automatically outside of surgery hours whilst real time remote monitoring can be done via the app.

ECO DRY+ TECHNOLOGY

EcoDry+ technology adapts the drying time to the mass of the load reducing the cycle time, increasing life span of instruments and optimising energy consumption.



W&H Decon Equipment

LARA Vacuum B Sterilizer

Lara Vacuum B Sterilizer

B Type sterilizer designed for all load types with S Type capabilities using the unique activation codes

Equipped with fast cycle times and a secure data system, Lara simplifies and speeds up the sterilisation process. Lara offers the new activation code system allowing users to easily upgrade additional features.

This allows the Lara to be easily adapted to meet individual and future practice requirements.

- Intuitive user interface and touchscreen display for a smoother user experience
- Cycle traceability available thanks to WiFi connection and built in data logger
- Mobile App for Real Time remote monitoring
- Easy to clean ergonomic design
- Pre-programmable vacuum and helix test function to run automatically out of surgery hours
- Automatic water fill function
- Eco Dry technology
- Unique optional upgradeability to increase Performance and Traceability or to add a Fast Cycle



**Call for Current
Promo Prices**

LYLA S Type Sterilizer

W&H Decon Equipment



The unique concept sterilizer

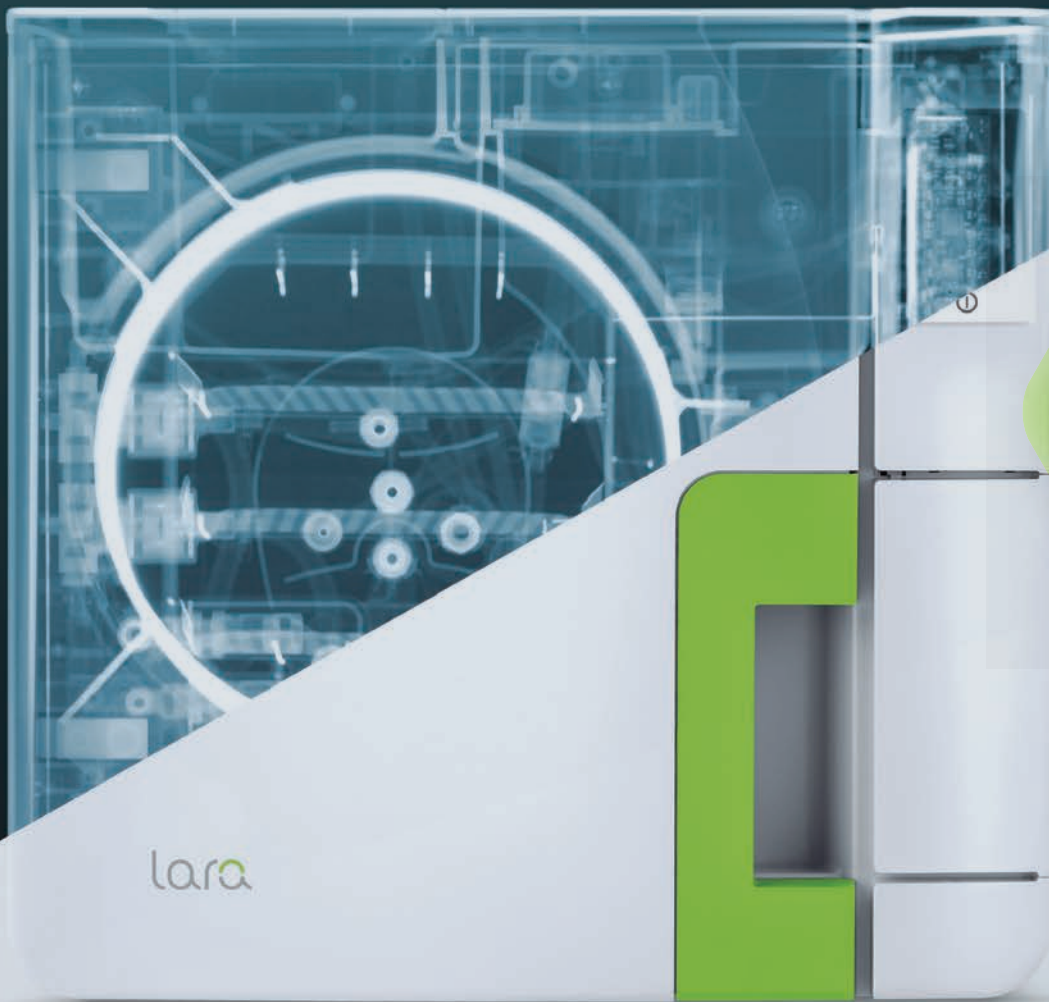
- Ergonomic design- The Lyla is ergonomically designed with modular feet to fit easily into any decon room. It's easy to clean surfaces, automatic water fill and the accessible water tank makes it functional and user friendly.
- Quality – Lyla's high-quality build ensures reliability and long working life
- Future Proof – discover the Lyla's unique upgrade flexibility utilising Activation Codes which enable:
 - Upgrade to a B Cycle Sterilizer
 - Access to remote data storage
 - Increased traceability



- Cycle Time – from 23 minutes for an average 2kg load
- Ease of use – thanks to its intuitive user interface, the 3.5" touchscreen display assures a smoother user experience.
- Traceability – built-in USB port, option cycle report printer and barcode label printer enable complete documentation.
- Wi-Fi – The Lyla can be connected to a network for increased integration

Capacity – 17 or 22 litre available

**Call for Current
Promo Prices**



**Not all
sterilizers are fit
for purpose:**

Only a Type B Vacuum Sterilizer ensures complete sterilization of all load types including: handpieces and other hollow, porous and wrapped loads

W&H Type B Vacuum Sterilizers: Top Quality Innovation, Efficiency, Reliability and Service

Lara: The Affordable, Futureproof Vacuum B Sterilizer

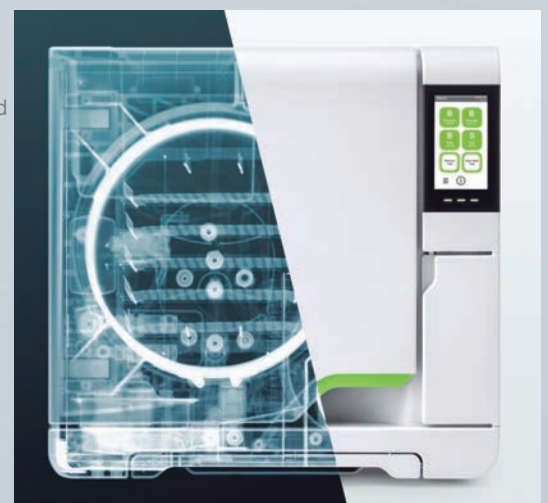
The Lara is an innovative mid-range sterilizer with unique upgradeability to meet future and individual demands.

- Optional Activation Codes to upgrade **Performance / Fast Cycle / Traceability**
- Full traceability with built-in data logger
- Economical water consumption
- Automatic water filling option

Lisa: State of the Art Vacuum B Sterilizer Technology

The Lisa Type B Vacuum Sterilizer offers an ergonomic design and an outstanding reputation for reliability, speed, traceability and efficiency.

- Cycle times from only 13 minutes
- Impressive, intuitive connectivity and realtime monitoring via the Lisa App
- Exceptional traceability using Wi-Fi technology



Choose quality equipment at competitive prices, made of so much more!

W&H: Products with KNOW&HOW

The Trycare History

Ever wondered why so many dental companies are based in the West Riding of Yorkshire?

It's because Bradford was the home of Baxter's of Bradford, popularly known as Baxter Dental, which was formed in 1948. Starting as a denture flask manufacturer to meet the demand for dentures after the creation of the NHS, Baxter Dental grew and grew because of its reputation for exceptional service, honesty and being at the forefront of dental innovation.

Following its name change to Procare Dental, Baxter Dental was Britain's most successful post-war Dental company and dominated the UK dental supply world.

When Baxter Dental collapsed following its sale to a corporate many very experienced people started

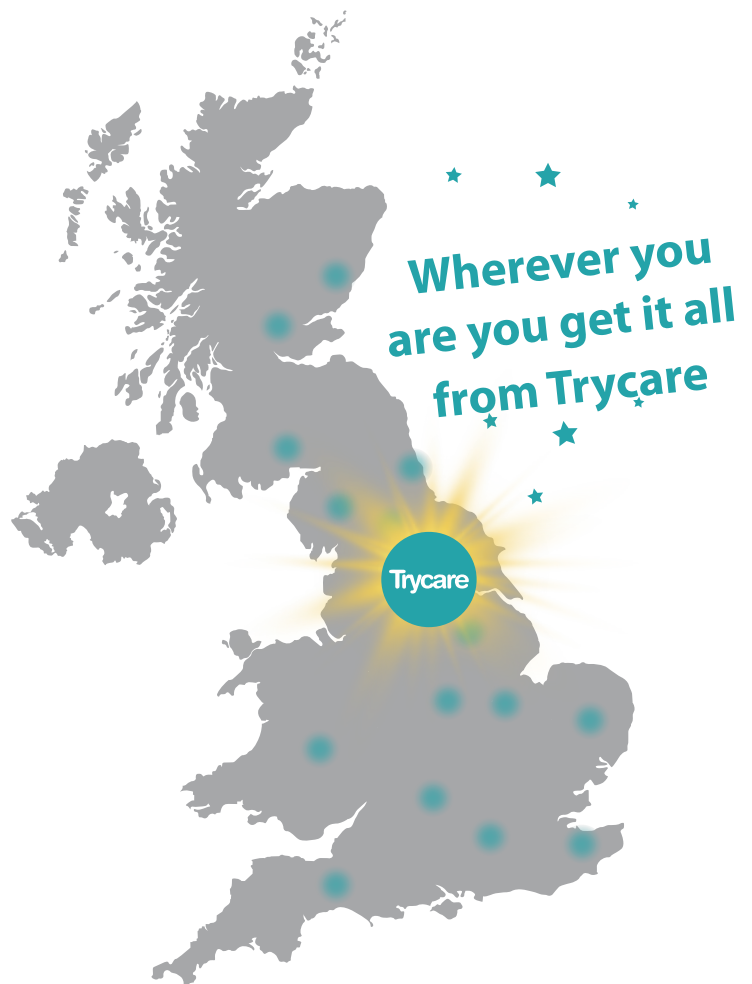
"Over 75 years of service to Dentistry"

their own businesses including Trycare. So Trycare is a direct descendent of Baxter Dental and even today employs many of the people who formerly worked for Baxter/Procare Dental. A genuine phoenix rising from the ashes!

Today Trycare is the epitome of Baxter Dental's determination and commitment to service excellence, though we believe we have taken Baxter's standards many steps further.

Trycare, like Baxter Dental, is conveniently placed right at the centre of the UK, giving us best access to Practices all over Britain! In fact, it is at the epicentre of UK Dentistry.

Our claim is to be the market leader with some of the finest unique products available plus all the other sundry products you need to run a successful modern-day Practice. We are renowned for our friendly, knowledgeable and helpful methods. We have an enviable work attitude and ethos.



Switch with **no** risk

Switching supplier doesn't need to involve taking a risk. Our collective years of knowledge and service are here to ensure you always have the best experience. Our customers are often surprised by our enthusiasm and support, no matter what we spare no effort. Helpful, friendly and professional are compliments we happily wear with pride :)



Discover the **magic** of Trycare & be part of something special!

Only a phone call away, the Trycare team are here **Monday - Friday 8.30am - 5.30pm** to go those extra miles...

Call **01274 885544**



Discover the magic of **Trycare**

Be part of something special

Trycare (Head Office)

Rialto Buildings
Station Road
Clayton, Bradford
West Yorkshire
BD14 6JA

Trycare (Returns)

Westpark
Brackenbeck Road
Bradford
West Yorkshire
BD7 2LW

Contact Us

To order : **01274 88 55 44**

Web : **www.trycare.co.uk/dental**

Email : **dental@trycare.co.uk**

Hours : Mon - Fri 8.30am - 5.30pm