

Why The Low Price?

You might be wondering, "If *Simile* Composite is so good, why is its price so low?"

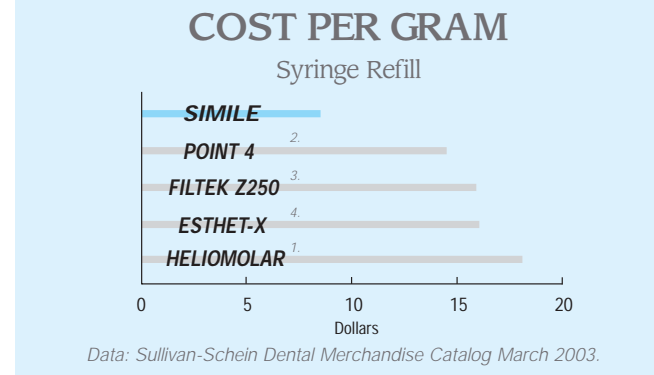
The answer is very simple:

Our competitors have different customers.

They sell to dealers who take 30-40% and who, in turn, employ salesmen who are paid a commission.

We Sell to You.

At *Pentron*, nothing stands between our customers and us. We rely on our products to sell themselves.



photos courtesy of Dr. Liviu Steier

And that is just what *Simile* Composite will do in your hands. Try it and see how the best composite at the best price, is truly the best at any price.

Ordering Information



Simile Kits

| | REF |
|----------------------|------|
| 10 Shade Syringe | N56A |
| 5 Shade Syringe | N56B |
| 10 Shade Single Dose | N56C |
| 5 Shade Single Dose | N56D |

Syringe Refills

| | REF |
|---------------|-------|
| A-0 | N56AT |
| A1 | N56AA |
| A2 | N56AB |
| A3 | N56AC |
| A3.5 | N56AD |
| A4 | N56AN |
| B-0 | N56AU |
| B1 | N56AE |
| B2 | N56AF |
| B3 | N56AG |
| B4 | N56AO |
| C1 | N56AL |
| C2 | N56AH |
| C3 | N56AK |
| C4 | N56AP |
| D2 | N56AQ |
| D3 | N56AR |
| D4 | N56AS |
| Univ. Opaque | N56AI |
| Clear Incisal | N56AJ |
| Opal Incisal | N56AV |

Single Dose Refills

| | REF |
|---------------|-------|
| A-0 | N56BS |
| A1 | N56BA |
| A2 | N56BB |
| A3 | N56BC |
| A3.5 | N56BD |
| A4 | N56BM |
| B-0 | N56BT |
| B1 | N56BE |
| B2 | N56BF |
| B3 | N56BG |
| B4 | N54BN |
| C1 | N56BH |
| C2 | N56BI |
| C3 | N56BJ |
| C4 | N56BO |
| D2 | N56BP |
| D3 | N56BQ |
| D4 | N56BR |
| Univ. Opaque | N56BK |
| Clear Incisal | N56BL |
| Opal Incisal | N56BU |



ISO 9001 CERTIFIED

P. O. Box 724 • Wallingford, CT USA 06492

*We make good products at a fair price.
And we stand behind them.*

Order Online: www.pentron.com

Free shipping when you order online - minimum order \$30.

800-551-0283

203-265-7397 • Toll Free Fax 877-677-8844

In Canada call SYNCA at 1-800-667-9622

Subject to change or cancellation without notice. © Pentron Clinical Technologies, LLC, 2003. All rights reserved.

1. Heliomolar is a Registered Trademark of Vivadent Corp.
3. Filtek is a Registered Trademark of the 3M Company.

2. Point 4 is a Trademark of Kerr Corp.
4. Esthet-X is a Registered trademark of Dentsply International Inc.

The Best Composite At Any Price...

...Is The Best Composite At The Best Price!



Nobody makes better composites than Pentron®. And Pentron has never made a better composite than Simile™ Nano-Hybrid Composite.

A True Nano-Hybrid Composite.

Simile Nano-hybrid Composite is built on two unique fillers. The first is a high strength barium boro-silicate glass that provides a backbone of strength, radiopacity and wear resistance.

But added to it is a unique, silica-zirconia nano-particle which we make using a state-of-the-art solution/gelation (SOL-GEL) process. This process yields a filler particle a mere 0.01 microns

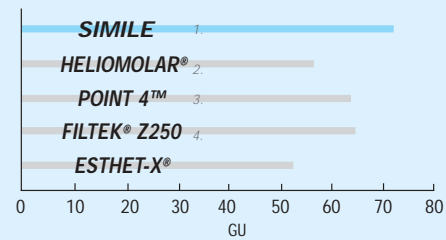
in size – a true nano-particle. It's this unique filler that gives Simile Composite its extraordinary shine – visible as soon as you handle it.

Now take these unique fillers and blend them with our exclusive, patented Polycarbonate/Bis-GMA resin and you have perhaps the most advanced composite available – anywhere.



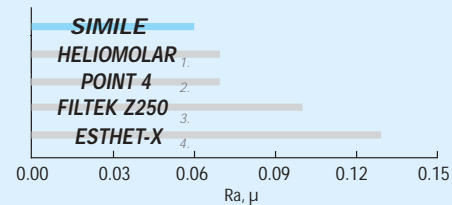
photos courtesy of Dr. Tarun Agarwal

GLOSS AFTER POLISHING



Data: Dr. John M. Powers, Houston, Texas

SURFACE ROUGHNESS (POLISHABILITY)*



*Surface smoothness measured by profilometry after polishing with Fini™ Polishing Disks

Data: Dr. John M. Powers, Houston, Texas

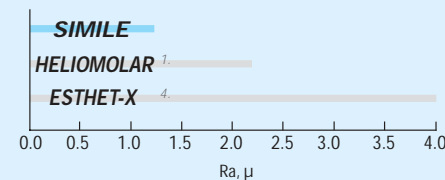
The Best Characteristics ...

As seen by the results of independent testing, Simile Composite looks great. Surface smoothness and surface gloss compare favorably not just to hybrid composite, but to a leading microfill as well. And its resistance to tooth brush abrasion – ten years simulated wear – shows how Simile Composite's shine is designed to last and last.

TOOTHBRUSH WEAR ABRASION

(Average roughness, R subset a, microns)

100K Cycles

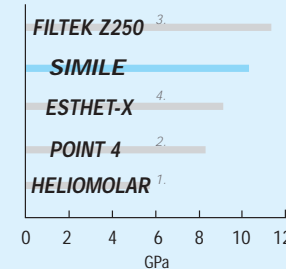


Data: Dr. Jeffrey Y. Thompson, Chapel Hill, North Carolina

... On The Outside And Inside!

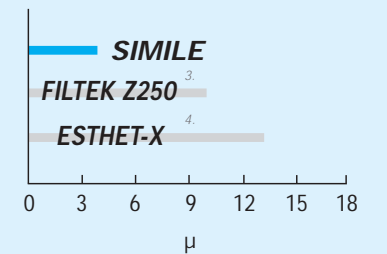
To make a truly universal composite, you can't sacrifice strength for esthetics. The independent testing results shown here testify that Simile Composite more than holds its own with the leading all purpose composites – some costing twice as much!

FLEXURAL MODULUS



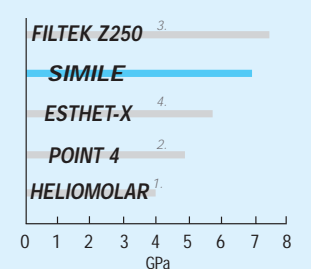
Data: Dr. John M. Powers, Houston, Texas

GENERALIZED WEAR – SURFACE (microns)

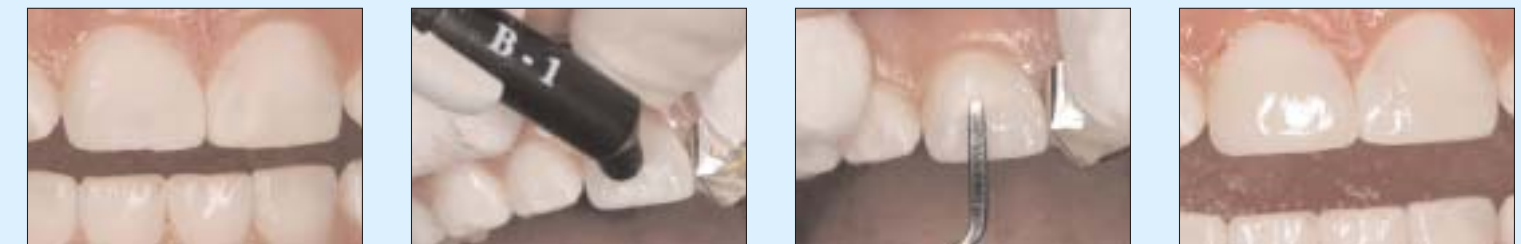


Data: Dr. Shiro Suzuki, Birmingham, Alabama

COMPRESSIVE MODULUS



Data: Dr. John M. Powers, Houston, Texas



photos courtesy of Dr. Amelia Williams, DDS