

## Ordering Information

### Ceram.x Spectra™ ST

Universal Composite Restorative

#### HIGH VISCOSITY

##### Compules® Tips Intro Kit (HV) 607.01.570N

24 HV Compules® Tips (Gray) Assorted - (0.25 g each)  
(4 x A1; 4 x A2; 8 x A3; 4 x A3.5; 4 x A4)  
1 Compules® Tips Gun  
i-shade label

##### Syringe Intro Kit (HV) 607.01.550N

5 HV Syringes (Gray) Assorted - (3 g each)  
(A1; A2; A3; A3.5; A4)  
i-shade label  
1 Bottle Prime&Bond Active™ Adhesive (2.5 mL)  
Accessories

Refills (HV)	Compules® Tips	Syringe
Shades	(16 x 0.25 g)	(1 x 3 g)
A1 (= VITA® shades A1; B1; C1)	<b>607.01.571N</b>	<b>607.01.551N</b>
A2 (= VITA® shades A2; B2; D2)	<b>607.01.572N</b>	<b>607.01.552N</b>
A3 (= VITA® shades A3; C2; D3; D4)	<b>607.01.573N</b>	<b>607.01.553N</b>
A3.5 (= VITA® shades A3.5; B3; B4; C3)	<b>607.01.575N</b>	<b>607.01.555N</b>
A4 (= VITA® shades A4; C4)	<b>607.01.574N</b>	<b>607.01.554N</b>
BW (Bleach White)	<b>607.01.576N</b>	

Eco Refills (HV)	Compules® Tips
Shades	(52 x 0.25 g)
A2 (= VITA® A2; B2; D2)	<b>607.01.582N</b>
A3 (= VITA® A3; C2; D3; D4)	<b>607.01.583N</b>

#### LOW VISCOSITY

##### Compules® Tips Intro Kit (LV) 607.01.690

24 LV Compules® Tips (Blue) Assorted - (0.25 g each)  
(4 x A1; 4 x A2; 8 x A3; 4 x A3.5; 4 x A4)  
1 Compules® Tips Gun  
i-shade label

##### Syringe Intro Kit (LV) 607.01.680

5 LV Syringes (Blue) Assorted - (3 g each)  
(A1; A2; A3; A3.5; A4)  
i-shade label  
1 Bottle Prime&Bond Active™ Adhesive (2.5 mL)  
Accessories

Refills (LV)	Compules® Tips	Syringe
Shades	(16 x 0.25 g)	(1 x 3 g)
A1 (= VITA® shades A1; B1; C1)	<b>607.01.691</b>	<b>607.01.681</b>
A2 (= VITA® shades A2; B2; D2)	<b>607.01.692</b>	<b>607.01.682</b>
A3 (= VITA® shades A3; C2; D3; D4)	<b>607.01.693</b>	<b>607.01.683</b>
A3.5 (= VITA® shades A3.5; B3; B4; C3)	<b>607.01.695</b>	<b>607.01.685</b>
A4 (= VITA® shades A4; C4)	<b>607.01.694</b>	<b>607.01.684</b>
BW (Bleach White)	<b>607.01.696</b>	

ECO Refills (LV)	Compules® Tips
Shades	(52 x 0.25 g)
A2 (= VITA® A2; B2; D2)	<b>607.01.672</b>
A3 (= VITA® A3; C2; D3; D4)	<b>607.01.673</b>

##### Compules® Tips Gun 606.65.900

1 Compules® Tips Gun

### Ceram.x Spectra™ ST Effects

Universal Composite Restorative

##### Introductory Kit 607.01.710

28 HV Compules® Tips (Gray) Assorted - (0.25 g each)  
(12 x D1; 8 x D3; 4 x E1)  
Illustrated Technique Guide  
i-shade label

Refills (HV)	Compules® Tips	Syringe
Shades	(16 x 0.25 g)	(1 x 3 g)
D1 (use with A1; A2)	<b>607.01.718</b>	<b>607.01.708</b>
D3 (use with A3; A3.5; A4)	<b>607.01.719</b>	<b>607.01.709</b>
E1 (use with A1; A2; A3; A3.5; A4)	<b>607.01.717</b>	<b>607.01.707</b>

### Ceram.x Spectra™ ST flow

Flowable Composite Restorative

##### Compula® Tips Introductory Kit 607.01.800

24 Compula® Tips (0.25 g ea)  
4 shade A1 (= VITA® shades A1; B1; C1)  
4 shade A2 (= VITA® shades A2; B2; D2)  
8 shade A3 (= VITA® shades A3; C2; D3; D4)  
4 shade A3.5 (= VITA® shades A3.5; B3; B4; C3)  
4 shade A4 (= VITA® shades A4; C4)  
Compules® Tips Gun  
i-shade label

##### Syringe Introductory Kit 607.01.820

5 Syringes (1.8 g each)  
(A1; A2; A3; A3.5; A4)  
50 syringe tips  
i-shade label

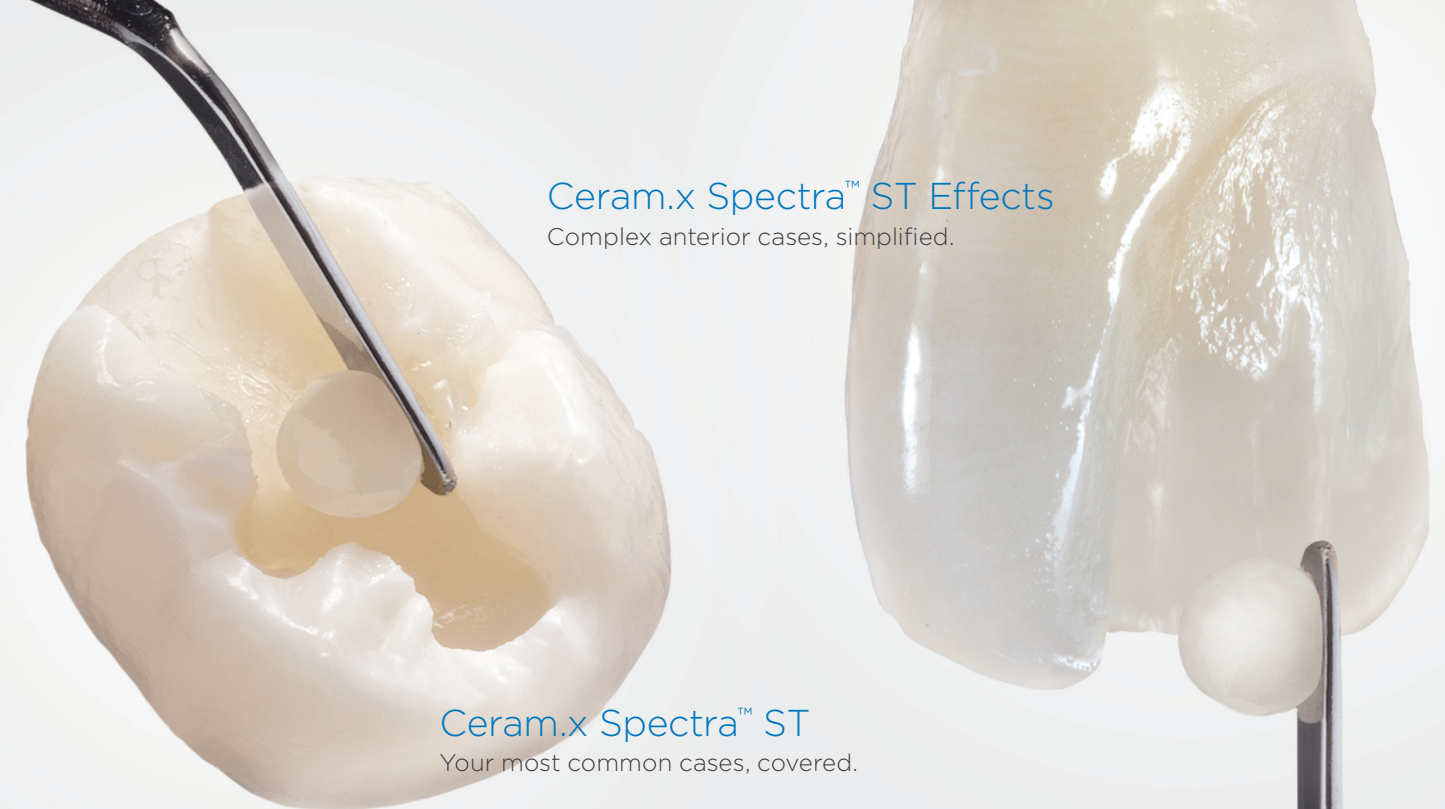
Refills	Compula® Tips	Syringe
Shades	(16 x 0.25 g)	(2 x 1.8 g + 25 Syringe Tips)
A1 (= VITA® shades A1; B1; C1)	<b>607.01.801</b>	<b>607.01.821</b>
A2 (= VITA® shades A2; B2; D2)	<b>607.01.802</b>	<b>607.01.822</b>
A3 (= VITA® shades A3; C2; D3; D4)	<b>607.01.803</b>	<b>607.01.823</b>
A3.5 (= VITA® shades A3.5; B3; B4; C3)	<b>607.01.805</b>	<b>607.01.825</b>
A4 (= VITA® shades A4; C4)	<b>607.01.804</b>	<b>607.01.824</b>
BW (Bleach White)	<b>607.01.806</b>	<b>607.01.826</b>
D1 (Opaque Dentin)	<b>607.01.807</b>	<b>607.01.827</b>
D3 (Opaque Dentin)	<b>607.01.808</b>	<b>607.01.828</b>
E1 (Translucent Enamel)	<b>607.01.809</b>	<b>607.01.829</b>

##### Syringe Tips Refill 607.01.819

50 syringe tips

##### Ceram.x Spectra™ ST Shade Guide 607.01.561N

1 shade guide holder  
9 shade guide tabs  
(A1, A2, A3, A3.5, A4, BW, D1, D3, E1)



Ceram.x Spectra™ ST Effects  
Complex anterior cases, simplified.

Ceram.x Spectra™ ST  
Your most common cases, covered.

# Efficient esthetics with Ceram.x Spectra™ ST composites.



Ceram.x Spectra™ ST flow  
Efficient esthetic flowable versatility.

To learn more about the Ceram.x Spectra™ ST portfolio, visit [www.dentsplysirona.com/CeramxSpectraST-composites](http://www.dentsplysirona.com/CeramxSpectraST-composites)

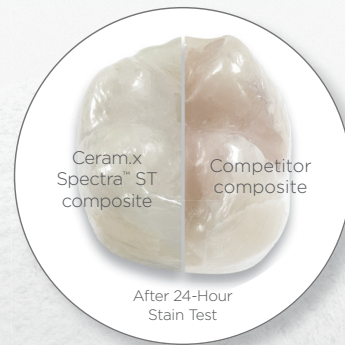
Our decades of innovation in composite materials taught us what matters most to dentists.



Handling



Esthetics



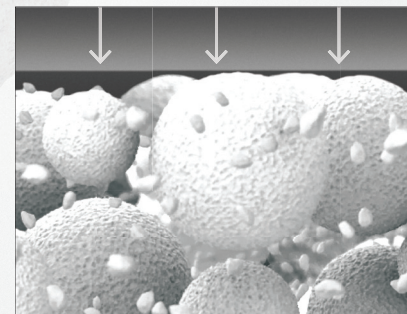
Longevity

# SphereTEC<sup>®</sup> Filler Technology

Ceram.x Spectra<sup>™</sup> ST composites excel where it counts thanks to SphereTEC<sup>®</sup> filler technology.

Key performance advantages of Ceram.x Spectra<sup>™</sup> ST composites were made possible with SphereTEC<sup>®</sup> filler technology. The SphereTEC<sup>®</sup> fillers' morphology, particle size distribution, and surface microstructure deliver the benefits that matter most to dentists.

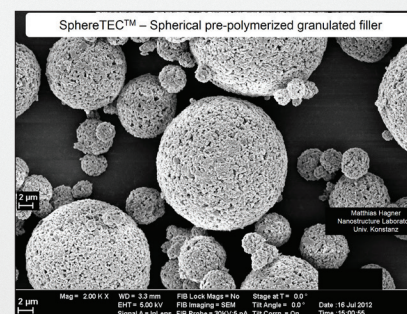
Magnification of a 15 micron diameter SphereTEC<sup>®</sup> filler particle



## Optimized Handling

**Easy handling is essential to placement efficiency.** The shape and size distribution of SphereTEC<sup>®</sup> fillers creates a ball-bearing like effect that enables excellent adaptation and sculptability. And they bind more free resin than usual fillers to avoid stickiness.

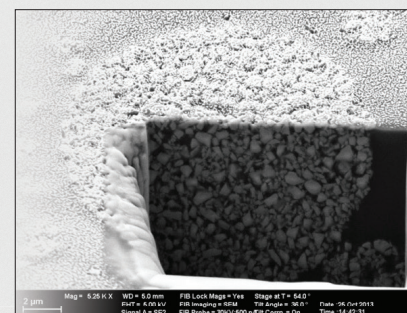
SPHERICAL



## Simplified Esthetics

**Natural esthetics should be easy to create.** SphereTEC<sup>®</sup> fillers are uniquely constructed to balance opacity, translucency, light absorption, and scattering for an excellent chameleon effect. Their microstructure enables a fast polish to a high gloss.

MICRO-SCALED



## Reliable Longevity

**Durable results promote profitability and reputation.** High filler packing density plus micro-mechanical locking of our resin and fillers deliver material strength and durability. And our resin infiltrated, prepolymerized filler design enables sophisticated stain resistance.

SUPERSTRUCTURES

# Simplify every restoration with Ceram.x Spectra™ ST composites featuring SphereTEC® technology

Your most common cases, covered.



## Ceram.x Spectra™ ST Universal Composite Restorative

Experience the ease of optimized handling in your ideal viscosity with five universal CLOUD shades that cover the full VITA® range.



Complex anterior cases, simplified.



## Ceram.x Spectra™ ST Effects Universal Composite Restorative

Featuring two additional opacities that work together in a simplified layering system with Ceram.x Spectra™ ST's 5 universal CLOUD shades.



Efficient esthetic flowable versatility.



## Ceram.x Spectra™ ST flow Flowable Composite Restorative

Versatile flow-on-demand handling with shades perfectly matched to our universal composite portfolio.



1. VITA® is not a registered trademark of Dentsply Sirona.

# Your preferred handling

## Two Universal Composite Handling Options

Thanks to SphereTEC® filler technology, Ceram.x Spectra™ ST composite offers optimized handling in a creamy and spreadable low viscosity or a firm and packable high viscosity to accommodate your preference and technique for placement efficiency.

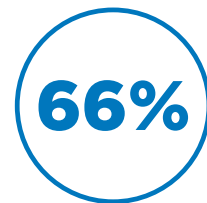
- Doesn't stick to hand instruments
- Adapts easily to cavity surfaces
- Easy to sculpt and shape
- Excellent slump resistance



## Versatile Flowable Composite Handling

For traditional flowable indications in the smile line, Ceram.x Spectra™ ST flow material enables the esthetic performance and durability you expect from a SphereTEC® based composite in flowable form.

- Flow-on-demand handling
- Excellent cavity adaptation
- Stays where placed until instrumentation initiates flow



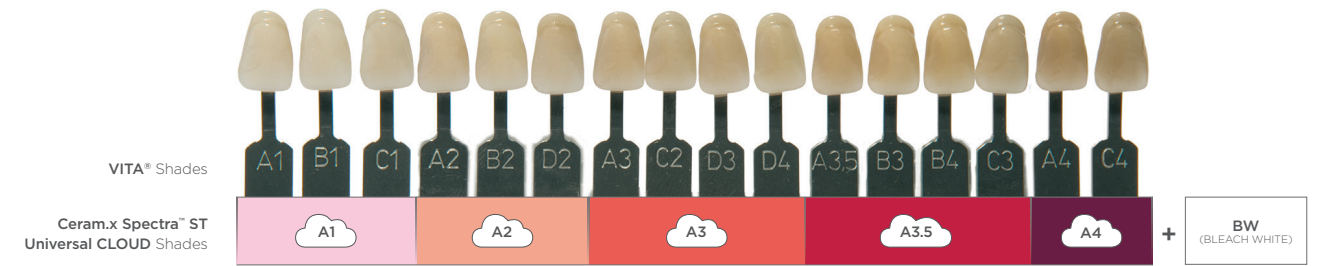
# Simplified esthetics

## Universal CLOUD shades for common cases

SphereTEC®'s primary filler particles and resin together enable an excellent chameleon effect for simplified shade matching. One universal CLOUD shade is all you need for the majority of cases.



- 5 universal CLOUD shades cover the full VITA® range
- Reliable, accurate shade match to surrounding tooth structure
- Save money and shelf space by reducing inventory
- BW shade available for bleach white restorations



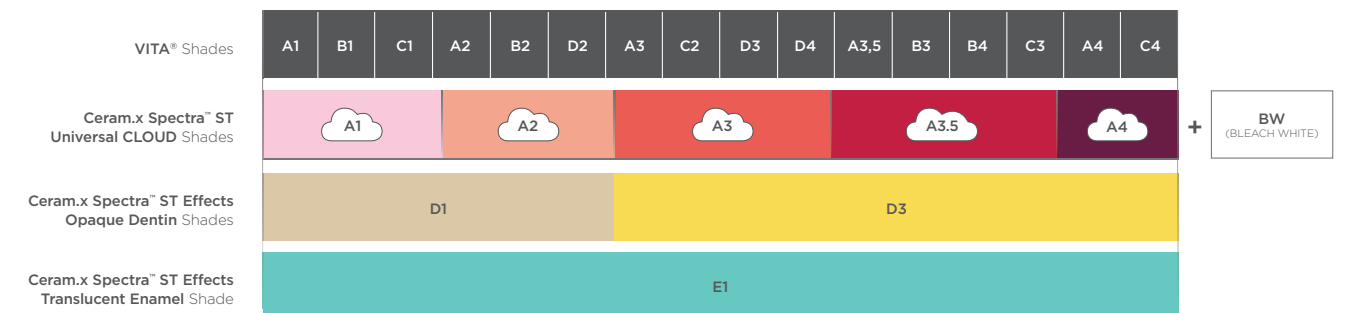
VITA® is not a registered trademark of Dentsply Sirona.

## Plus dentin and enamel shades for complex anterior cases

For esthetically demanding anterior cases, Ceram.x Spectra™ ST Effects and Ceram.x Spectra™ ST universal CLOUD shades work together in a simplified layering technique.



- Select one of two dentin effects shades for added opacity
- One enamel effect shade for a highly translucent incisal edge
- Simple recipes and technique for advanced esthetic results



VITA® is not a registered trademark of Dentsply Sirona.

2. Dentsply Sirona Restorative, Europe composite user survey 2015, n=297.  
3. Dentsply Sirona Flowable Composite user study August 2018.

4. Aegis communications 2016 direct restorative survey (n=107).  
5. 2018 The Key Group, Inc.