



HyFlex[®] EDM: Stays on Track

/// COLTENE

HyFlex[®] EDM

Unmatched Flexibility and Fracture Resistance in a One File System

HyFlex EDM offers the dental practitioner enhanced ease of mechanical preparation of the root canal so that even newcomers to endodontics can achieve reliable results quickly and easily.



Stays on Track

Thanks to controlled memory properties, HyFlex EDM files follow the anatomy of the canal, which can significantly reduce the risk of ledging, transportation and perforation.



Extreme Fracture Resistance

HyFlex EDM files are produced using an innovative manufacturing process called Electrical Discharge Machining. The EDM process results in a file that is extremely flexible and fracture resistant. In fact, HyFlex EDM files are up to 700% more resistant to cyclic fatigue compared to traditional NiTi files.*



Fewer Files Required

The combination of flexibility, fracture resistance and cutting efficiency of the HyFlex EDM makes it possible to reduce the number of files required for cleaning while preserving anatomy.



Pre-Sterilized, Modular System

Provided as a modular system of sterile instruments, HyFlex EDM includes Shaping, Glidepath, OneFile, Orifice Opener and Finishing files and may be used in combination with HyFlex CM files.

HyFlex EDM OneFile at a Glance

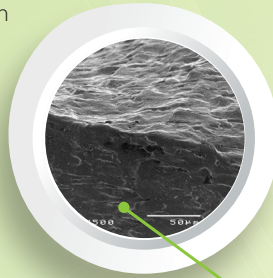


Pre-Sterile



Unmatched Fracture Resistance

Uniquely hardened surface reduces risk of file separation



Variable Cross Section Design

Contributes to high breakage resistance



Almost triangular cross section at top



Cutting Efficiency

Hardened surface plus controlled memory improves cutting efficiency



Extremely Flexible

Controlled memory allows superior canal tracking



Trapezoidal cross section in middle



Quadratic cross section at tip

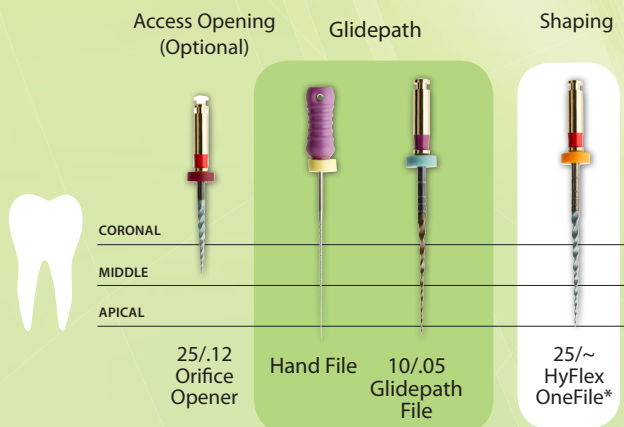


Visit COLTENE's YouTube channel for more information about the HyFlex EDM and EDM technology.

Fewer Files Required for Canal Preparation

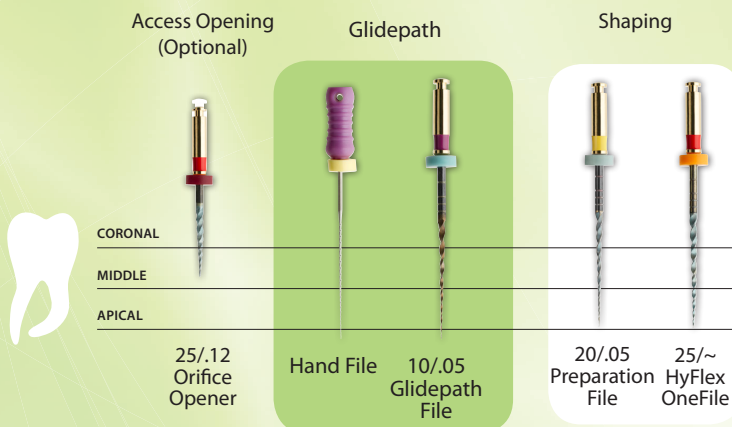
All Sizes Now Available in 21mm and 25mm lengths!

HyFlex EDM for Straight Canals

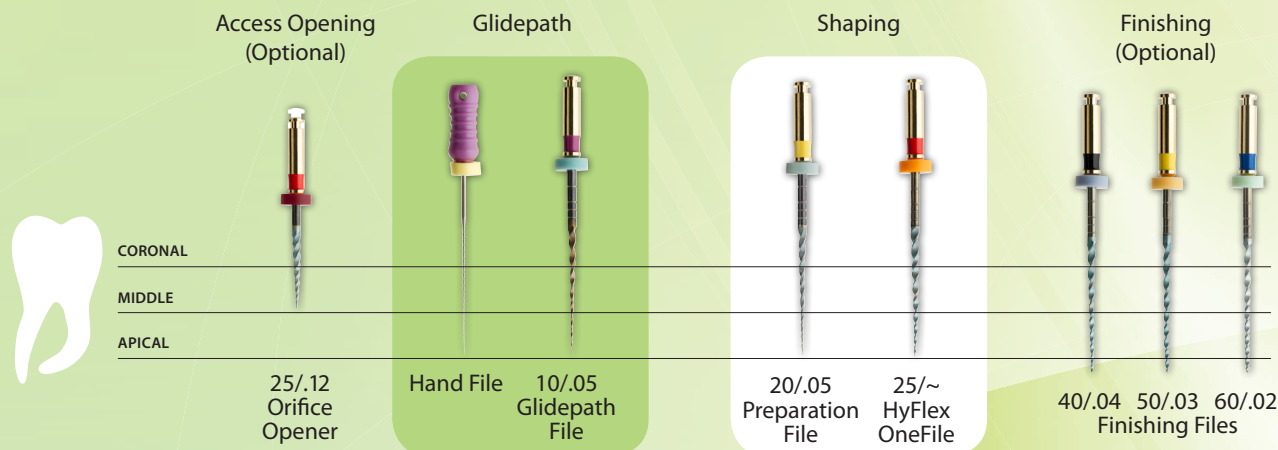


Depending on the clinical situation, use of HyFlex EDM files reduces the number of files required to 2 or 3 instruments, particularly in straight and larger canals.

HyFlex EDM for Curved Canals



A combination of HyFlex EDM OneFile and Preparation File is recommended for canals with medium curvature (400 rpm; 2.5 Ncm (25 mNm)).



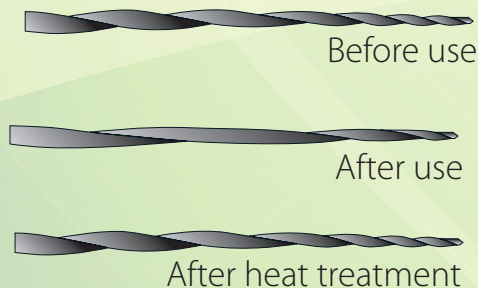
All HyFlex EDM Files can be used at 400 rpm and at a torque of up to 2.5 Ncm (25 mNm) except the Glidepath files, which can be used with 300 rpm and at a torque of up to 1.8 Ncm (18 mNm).

*OneFile (25/~) is constructed with a variable taper

Regeneration by Thermal Treatment

The built-in shape memory of HyFlex EDM files prevents stress during canal preparation by changing their spiral shape. A normal autoclaving process** is enough to return the files to their original shape and fatigue resistance. Should the file fail to regain its shape after heat treatment, risk of fracture is increased, and the file should not be used after visual inspection.

**Follow manufacturer's recommended settings



HyFlex EDM Electrical Discharge Machining

- Up to 700% higher fracture resistance*
- Uniquely hardened surface
- Less filing required for treatment success

The HyFlex EDM owes its unique properties to a breakthrough technology called “**Electrical Discharge Machining**”. This innovative manufacturing process uses spark erosion to harden the surface of the NiTi file, resulting in superior fracture resistance and improved cutting efficiency. Just like HyFlex CM files, HyFlex EDM files offer trusted controlled memory effect and regenerative properties.

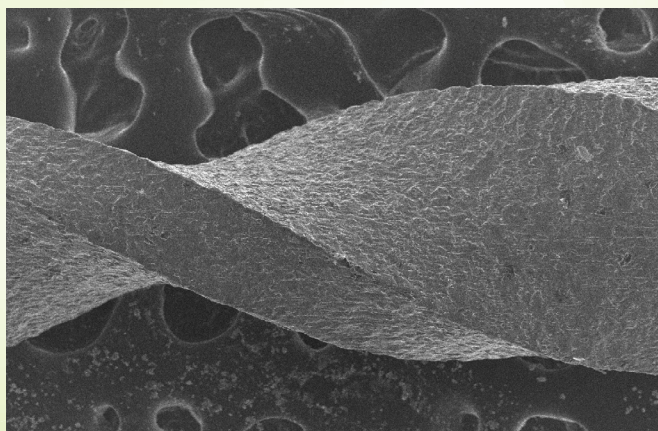
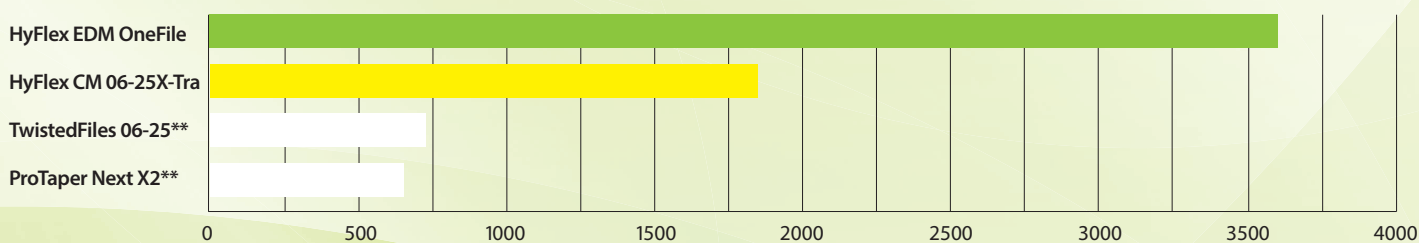


Image courtesy Dr. Chiara Pirani and Dr. Francesco Iacono, University of Bologna

Average value measured at 60° curvature with 9mm radial length

Number of cycles to failure



Source: Internal Tests/ **not a Trademark of COLTENE

Praise for HyFlex EDM Files

“I did a case with 3 EDM files and absolutely loved them! I cut through that curved anatomy like butter...No unwinding noted at all.

— Sam Alborz, DDS, CAGS

“The file remains centered and does not feel like the apical portion is “whipping” or “clicking”...This eases your mind when navigating complex anatomy and dilacerations.

— Marcus Johnson, DDS, MSD



HyFlex EDM Order Information

Catalog Number			Description
15mm	21mm	25mm	
60019630			25/.12 Orifice Opener
	60022281	60019628	10/.05 Glidepath File
	60022287	60022286	20/.05 Preparation File
	60022282	60019629	25/~ OneFile
	60022283	60019631	40/.04 Finishing File
	60022284	60019632	50/.03 Finishing File
	60022285	60019633	60/.02 Finishing File
	60022279	60019641	Shaping Set - Simple 25/.12, 10/.05, 25/~ One File
	60022288	60022289	Shaping Set - Medium 10/.05, 20/.05, 25/~ One File
	60022280	60019642	Finishing Set 40/.04, 50/.03, 60/.02

Sets include 3 instruments per package



Catalog Number	Description
60021895	HyFlexEDM IntroKit Compact*
(1 each) 25/.12, 10/.05, 25/~, 40/.04, 50/.03, 60/.02, HyFlex EDM Gutta Percha Assortment, HyFlex Organizer	

*Available only in the United States



Catalog Number	Matching GuttaPercha
Length ≥ 28mm	
60019771	GuttaPercha SpectraPoints OneFile
60022563	GuttaPercha SpectraPoints 0.05 #20
H08763	GuttaPercha SpectraPoints 0.04 #40
60019770	GuttaPercha SpectraPoints 0.03 #50
H08748	GuttaPercha SpectraPoints 0.02 #60
60021864	GuttaPercha Assortment (25/~, 40/.04, 50/.03, 60/.02)

HyFlex EDM Accessories

Catalog Number	Description
60018783	HyFlex File Organizer
H8CPCLINTRO	CanalPro Cordless Handpiece

Sealers and Obturation

Catalog Number	Description
60013709	GuttaFlow 2 Automix Standard Set



Coltene/Whaledent Inc.
 235 Ascot Parkway
 Cuyahoga Falls, OH 44223 / USA
 Tel. USA & Canada +1 800 221 3046
 +1 330 916 8800
 Fax +1 330 645 8704
 info.us@coltene.com
 © 2018 Coltène/Whaledent Inc.

Coltene/Whaledent AG
 Feldwiesenstrasse 20
 9450 Altstätten / Switzerland
 Tel. +41 (0)71 757 53 00
 Fax +41 (0)71 757 53 01
 info.ch@coltene.com

Coltene/Whaledent GmbH + Co. KG
 Raiffeisenstrasse 30
 89129 Langenau / Germany
 Tel. +49 (0)7345 805 0
 Fax +49 (0)7345 805 201
 info.de@coltene.com

coltene.com
COLTENE