

Exposé®

Disposable Caries Indicator

Caries detection made easier.

Exposé is a caries indicator on a stick!

Our indicator solution is pre-dried right onto our Benda® Micro applicator. When applied to the tooth, Exposé stains the infected dentin. Simply touch Exposé on a wet tooth (or with the 3-way syringe) and apply it to the suspected lesion and rinse. If the lesion is stained, it is carious. Exposé will not stain healthy dentin or enamel.

With Exposé you can be sure.

- Ideal for seeing infected dentin
- For discovery the fissures or confirming the fractures
- Finding the calcified canals
- For apical surgeries
- Can be used also as plaque detector

Features::

- Pre-dried indicator solution so there is no inadvertent staining
- Two dye colors – to make identification easy, even for old amalgams or deep preps with thin dentin floors
- Two head sizes to make access easy – any tooth, any location, any patient
- Bendable head stays where you want it for even easier access
- Safe, patient-friendly FD&C dye in a propylene glycol base
- A cost so low that an Exposé can be on every patient tray, every time



Exposé in use:



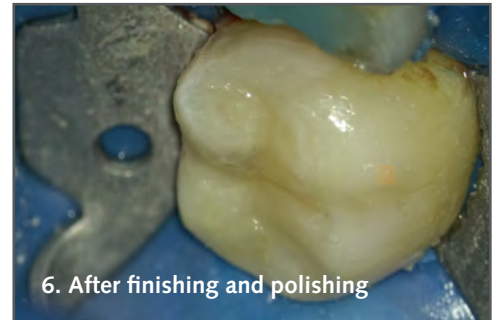
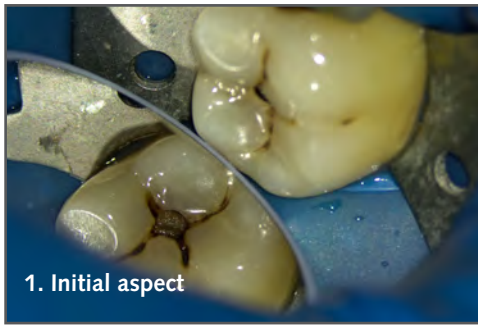
Available from Trycare

Call to order 01274 88 55 44

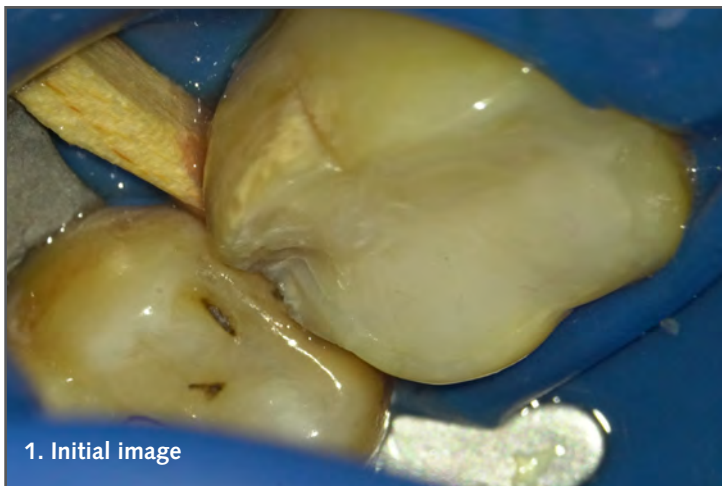
Visit www.trycare.co.uk/dental

Clinical cases:

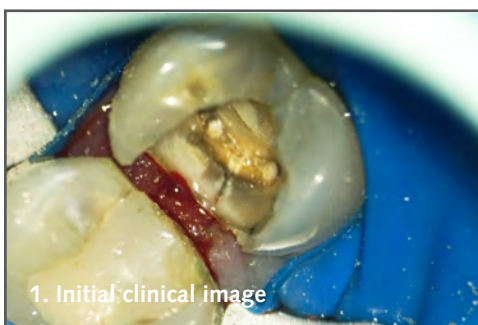
Occlusal and mesial decay on lower molar



Detecting the fissures



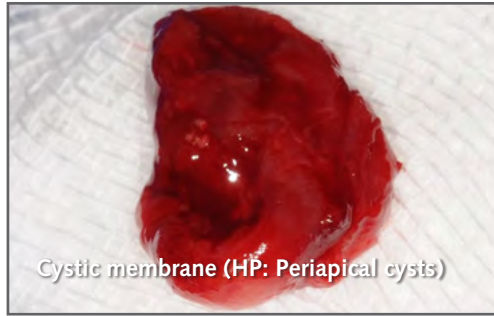
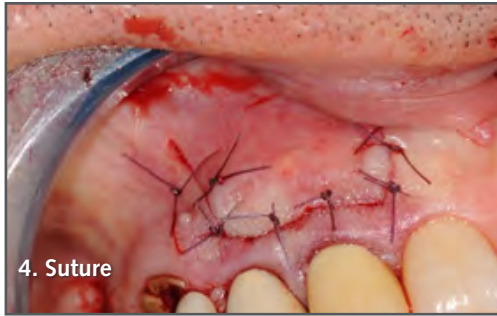
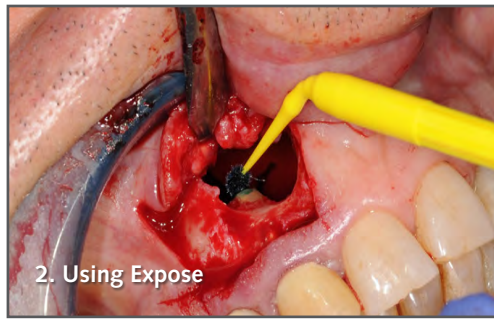
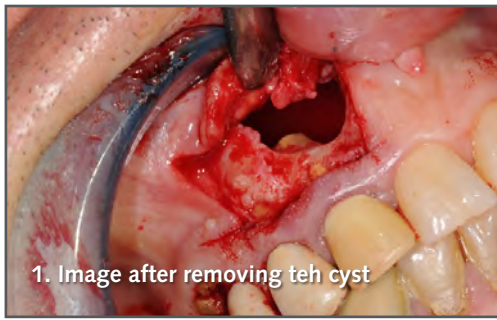
Confirmation of fractures



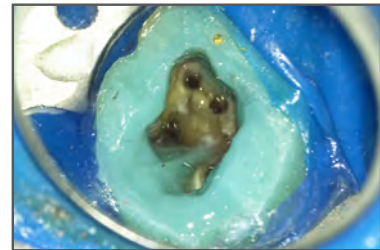
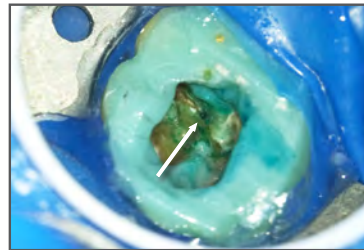
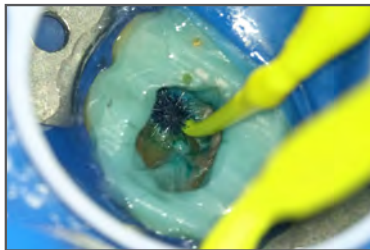
Occlusal and bucal decay on lower molar



Using Expose in endodontic surgery

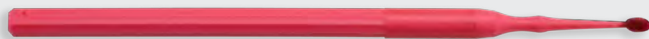


Using Expose for finding the calcified canals

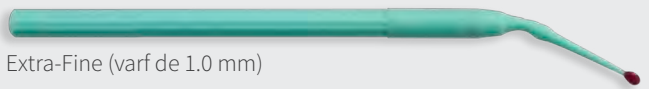


Exposé®
Disposable Caries Indicator

Indicatori rosii



Fine (varf de 1.5 mm)



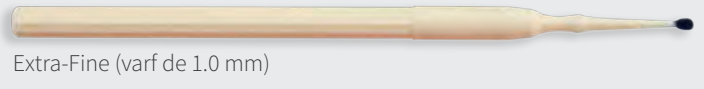
Extra-Fine (varf de 1.0 mm)

- High visibility for pigmented dentin under amalgam restorations
- Easier to distinguish in low light

Indicatori albastrii



Fine (varf de 1.5 mm)



Extra-Fine (varf de 1.0 mm)

- Easier to identify in cases where bleeding is present.
- Easier to distinguish in deep cavities
- For general use

Ordering Information

Exposé Caries Indicator – Blue

310330	Blue, Fine, Yellow Handle	576
310331	Blue, Extra-Fine, Ivory Handle	576
310334	Blue, Fine, Yellow Handle	100
310335	Blue, Extra-Fine, Ivory Handle	100

Exposé Caries Indicator – Red

310332	Red Indicator Extra-Fine, Green Handle	576
310333	Red, Fine, Red Handle	576
310336	Red, Extra-Fine, Green Handle	100
310337	Red, Fine, Red Handle	100