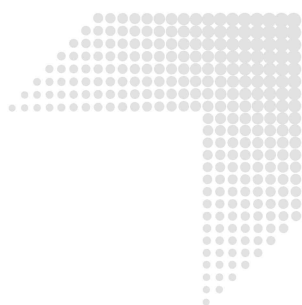


Icon proximal

Early arrest of caries – without drilling.



Icon proximal successfully arrests the progression of incipient caries – without drilling or unnecessary loss of substance. The damaged area is first prepared using an etching gel. The highly fluid infiltrant is then applied using the Approximal-Tip. It penetrates deep into the enamel due to the action of capillary forces. It fills the carious pore system, stabilizes it and blocks the penetration of cariogenic acids. Caries can thus be arrested early.

Icon proximal – treat earlier, preserve longer.



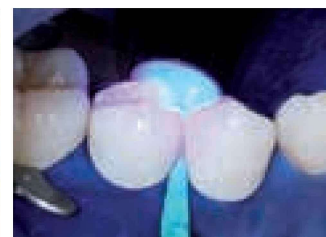
Etching with Icon-Etch.



Drying with Icon-Dry.



Applying Icon-Infiltrant.



Light-cure.



Indication: Micro-invasive treatment of early, non-cavitated caries (maximal radiological lesion progression into the outer third of dentin) in the proximal area

Good reasons

- Esthetic and medical indication
- Gentle therapy approach for difficult-to-reach proximal lesions in just a few steps
- No unnecessary loss of healthy hard tissue
- Prolongs the life-expectancy of the tooth



Starter Pack

- 2 Treatment units, each including:
- 1 Syringe @ 0.30 ml Icon-Etch
- 1 Syringe @ 0.45 ml Icon-Dry
- 1 Syringe @ 0.45 ml Icon-Infiltrant
- 6 Approximal-Tips
- 1 Luer-Lock-Tip
- 4 Dental wedges

REF 220341

Economy Pack

- 7 Treatment units, each including:
- 1 Syringe @ 0.30 ml Icon-Etch
- 1 Syringe @ 0.45 ml Icon-Dry
- 1 Syringe @ 0.45 ml Icon-Infiltrant
- 6 Approximal-Tips
- 1 Luer-Lock-Tip
- 4 Dental wedges

REF 220237