

# Count on Tetric® plus

Tetric® plus

Simplified universal composite



NEW

# Count on Tetric® plus

- 5 cavity classes
- 4 shades
- 3 seconds curing time
- 2 viscosities
- 1 universal composite



Your daily work is already filled with enough challenges. Your composite shouldn't be one of them.

Tetric plus is our new simplified universal composite. It meets all your requirements for a high-quality universal composite while at the same time offering greater efficiency and simplicity.

#### 4 unique shades for easy shade matching

With Tetric plus, 4 shades are sufficient to cover all VITA\* classical shades and Bleach. The simplified universal composite offers esthetics that are suitable for all cavity classes.



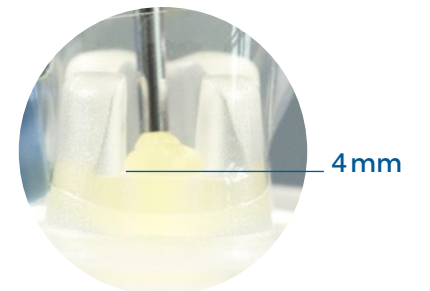
#### 4-filler technology for high-quality performance and proven handling

Tetric plus matches conventional composites in every way – it meets all your requirements, including a handling process that receives 90 percent of dentists commend highly.<sup>[1]</sup>



#### 4 mm for higher efficiency. 4 shades for greater simplicity.

Tetric plus combines layer thicknesses of up to 4 mm<sup>[2]</sup> with a universal range of applications. Easy shade selection and consistent curing times facilitate your treatment workflow. In short: With Tetric plus, you can save time and money.



\* No registered trademark of Ivoclar Vivadent AG.

[1] Internal study based on over 170 participants. More than 90% of participants rated the handling as "very good" or "good".

[2] Apply the shade A3.5 plus with a maximum layer thickness of 3.5 mm and light cure for 3s or 5s.

# 4 unique shades for easy shade matching

In 4 shades in layers of up to 4 mm. With esthetics that are also suitable for the anterior region. This is Tetric plus.

### Exceptional shade adaptation

Tetric plus offers an even better chameleon effect. With just four shades you can cover the entire spectrum of natural tooth colours.

In its cured state, Tetric plus absorbs and scatters light similarly to natural tooth structure, allowing it to blend almost seamlessly with the surrounding tooth colour. The ideal interaction between monomers, fillers and pigments facilitates this.

### Evidence-based shade concept

We have developed four unique shades that cover all 16 VITA\* classical shades and Bleach. What is so special about them? Their development was inspired by nature.

We have measured and analyzed the tooth colours of nearly 400 people. In doing so, we were able to identify four shade clusters that optimally cover the colour spectrum of natural teeth. Based on these four clusters and in line with the VITA\* shades, we formulated Tetric plus.

More than

80%

of the dentists give excellent ratings for shade matching<sup>[3]</sup>

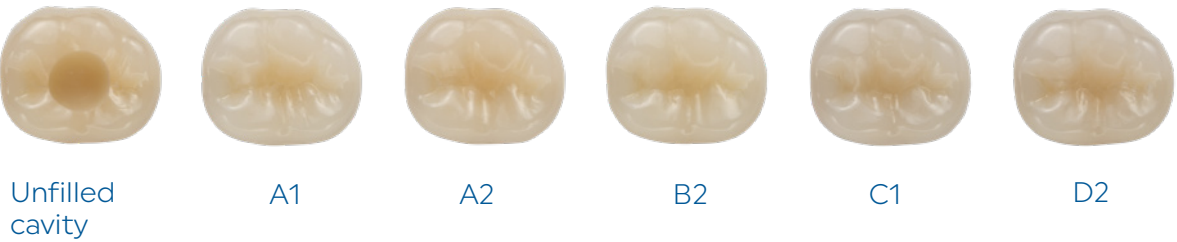


### Easy shade matching

We developed a shade concept that allows for easy and straightforward shade selection. Using the Tetric plus shade guide or the VITA\* shade scale, you can easily decide which Tetric plus shade is the right one.

Tetric plus				
	A1, A2, B2, C1, D2	A3, C2, C3, D3, D4	A3.5, A4, B3, B4, C4	B1, Bleach

### Natural shade match of Tetric plus Fill in shade A2 plus across five different tooth colours



\* No registered trademark of Ivoclar Vivadent AG.  
[3] Internal study based on over 170 participants. 81% rated the shade matching as "exact" or "strong".



# Esthetics for 5 cavity classes

## Fantastic change in translucency

In its uncured state, Tetric plus is highly translucent, allowing reliable and rapid light curing in layers of up to 4 mm. Once cured, Tetric plus attains the desired enamel-like translucency, making it ideal for use in the anterior region.

How is this achieved? This is made possible through patented technology that activates a change in translucency during polymerization.



Before curing, Tetric plus is translucent with a yellowish hue. This offers the advantage of easily identifying uncured areas.



Both aspects change after polymerization: In its cured state, Tetric plus becomes more opaque and matches the desired tooth shade.

No blocker required

## Excellent polishability

Thanks to its optimized filler technology, Tetric plus can be quickly polished to a high gloss. In just a few seconds, you achieve not only a stunning surface but also a long-lasting gloss effect.

# Clinical cases

Class I cavity restored with Tetric plus Flow A3.5 plus and Tetric plus Fill A3 plus



Before: Filling with insufficient marginal adaptation and secondary caries on tooth 26



After

Class II cavity restored with Tetric plus Flow A3 plus and Tetric plus Fill A2 plus



Before: Filling with insufficient marginal adaptation on tooth 16



After

Class V cavity restored with Tetric plus Flow A3.5 plus



Before: Wedge-shaped defect and sensitivity to temperature on tooth 16



After

Class-III- and Class-V-cavity with Tetric plus Fill A3 plus and A3.5 plus



Before: Insufficient restorations and marginal discoloration (on teeth 12 and 21), loss of restoration (on tooth 11) and insufficient proximal fillings (on teeth 11 and 21).



After

Source: Dr Ronny Watzke, Ivoclar, Liechtenstein

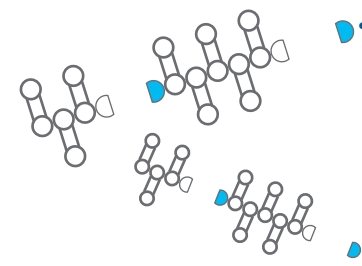


# Top quality down the line

Tetric plus meets all criteria essential for high-quality composites.

- ✓ Reliable curing<sup>[4]</sup> of layers of up to 4 mm in thickness, ensuring strength and longevity
- ✓ High radiopacity<sup>[4]</sup> >200 % Al for easy diagnostics
- ✓ Very good mechanical properties for high strength:
  - High flexural strength<sup>[4]</sup> (133 MPa) and compressive strength (375 MPa)
  - Low wear
- ✓ Low shrinkage stress for a reduced risk of marginal gaps
- ✓ High bond strength with Adhese Universal for good marginal integrity
- ✓ Low water absorption<sup>[4]</sup> of 21 µg/mm<sup>3</sup> for improved stability

[4] According to ISO 4049

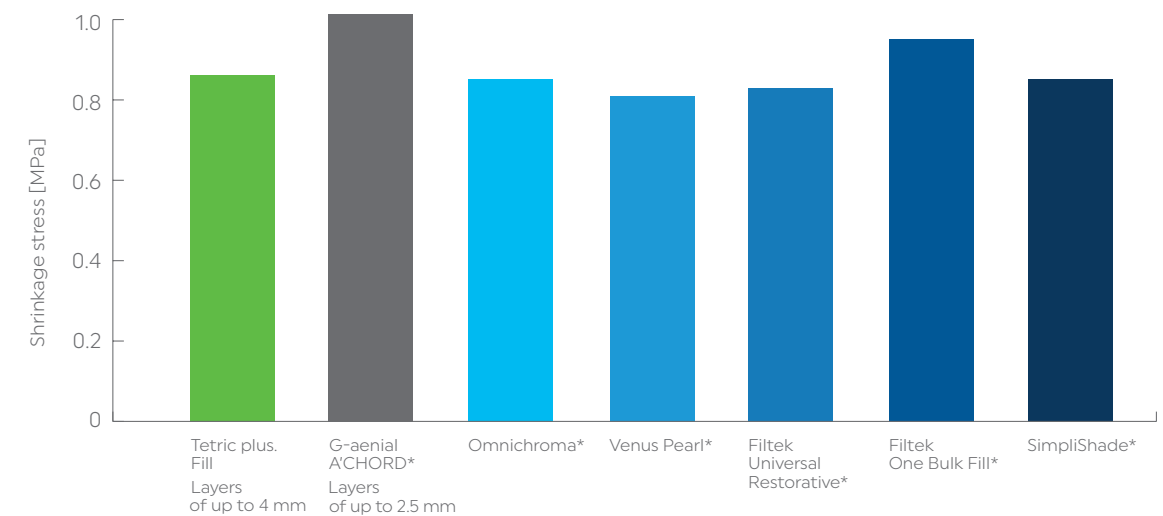


## Effective shrinkage compensation technology

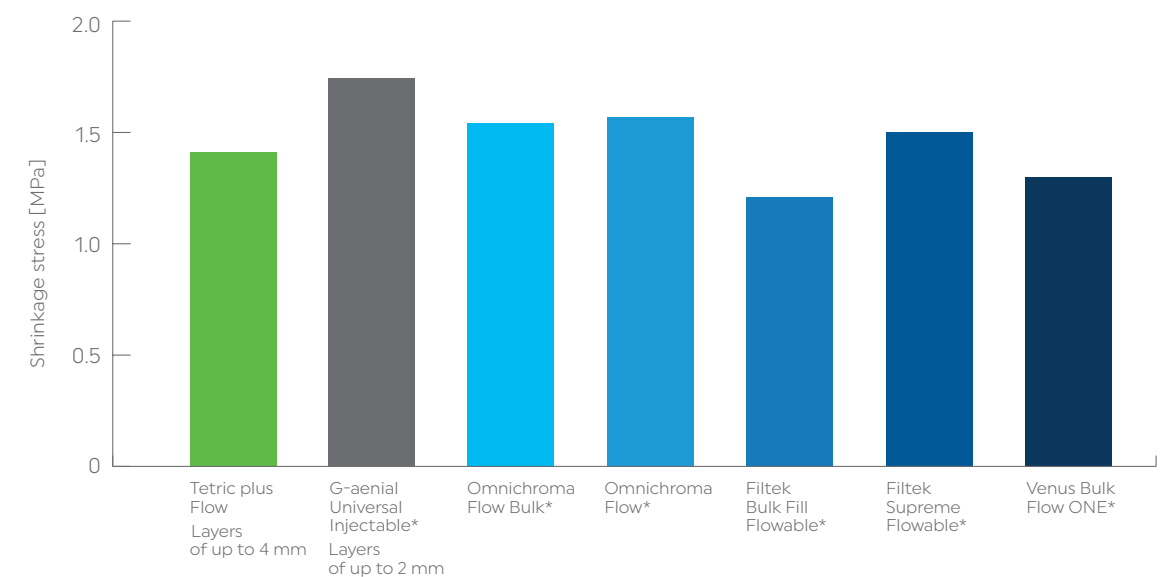
The requirements for 4-mm composites are more demanding, as the thicker layer must not lead to increased shrinkage stress during polymerization.

**Our solution:** our patented chain controller. In combination with a special filler that has an exceptionally low modulus of elasticity, the chain controller minimizes both volumetric shrinkage and shrinkage stress, ensuring that Tetric plus exhibits shrinkage stress comparable to conventional composites.

Shrinkage stress of Tetric plus Fill – Comparison to competitor products



Shrinkage stress of Tetric plus Flow – Comparison to competitor products



\* No registered trademark of Ivoclar Vivadent AG.  
Source: Internal data, Ivoclar Vivadent AG.



# Tetric plus Fill – handling tailored to your needs

We understand how important the handling of composites is in your daily work and we are confident that Tetric plus will meet your expectations.

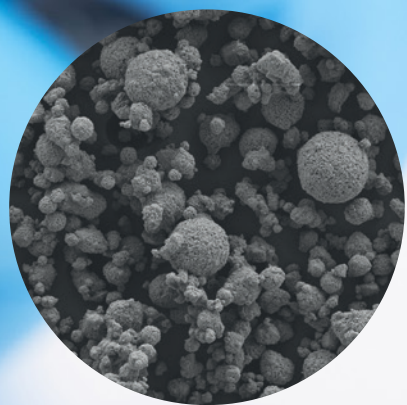
More than

# 90%

of the dentists rated the handling as "very good" or "good".<sup>[5]</sup>

## The benefits of Tetric plus Fill:

- ✓ Sculptable viscosity that adapts well to cavity walls
- ✓ 92% of dentists reported high satisfaction with the cushioning effect<sup>[6]</sup>
- ✓ Viscosity can be adjusted by heating if desired



## Optimized 4-filler technology

The combination of spherical and non-spherical fillers allows for easy handling and quick polishing.



## Simply warm it up

You can safely heat Tetric plus Fill in a dental composite warmer to up to 68°C to achieve a lower viscosity. No worries: The mechanical properties will not be affected.

[5] Internal study based on over 170 participants.  
[6] Internal study based on over 170 participants.  
92% reported experiencing "no" or "hardly noticeable deformations".



# Tetric plus Flow – exceptional universal viscosity

What defines a flowable composite from a clinical perspective? Its handling, low tendency for air entrapment and reliable cavity adaptation. Tetric plus Flow delivers exactly that.

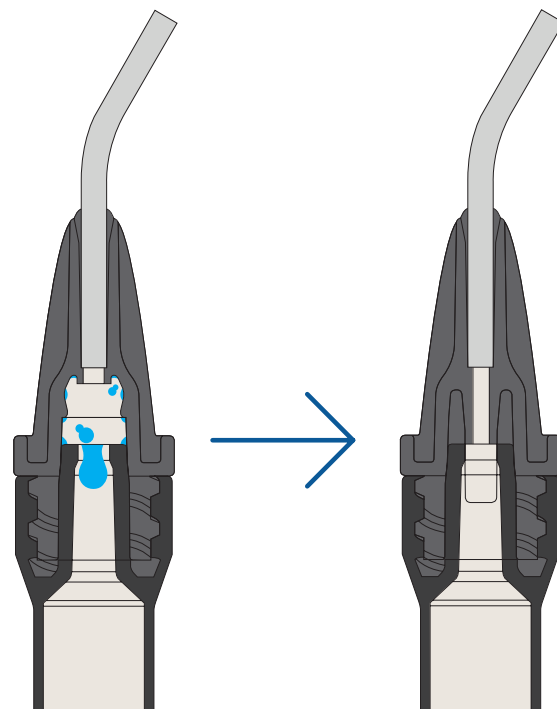
Did you already know about these benefits of the cannulas for Tetric plus Flow?

✓ **New and optimized**

Thanks to their optimized internal geometry, no more air bubbles form in the cannulas.

✓ **Two sizes for different applications**

- 0.9-mm cannulas for precise application, e.g. in Class V restorations
- 1.2-mm cannulas for efficient volume replacement in larger cavities with layer thicknesses of up to 4 mm



The benefits of Tetric plus Flow:

- ✓ Universal viscosity thanks to exceptional thixotropic properties
  - Precise application and high stability<sup>[7]</sup>
  - Good flowability<sup>[8]</sup> for fast volume replacement
- ✓ Adapts to cavity walls and has a self-levelling effect
- ✓ Even with 4-mm layers, no additional covering layer is required – thanks to the material's very good mechanical properties<sup>[9]</sup>



[7] Internal study based on over 170 participants. 89% of the participants rated the stability of Tetric plus Flow as "very good" or "good".  
[8] Internal study based on over 170 participants. 91% of the participants rated the flowability of Tetric plus Flow as "very good" or "good".  
[9] For load-bearing restorations, apply a covering layer of a sculptable composite.

# 4 mm for higher efficiency. 4 shades for greater simplicity.

Tetric plus not only offers efficient and easy shade selection, but also the shortest and most consistent curing times<sup>[10]</sup>. So that you can fully focus on the treatment.

### Universal 4-mm composite

Efficient 4-mm composites are not a new thing. What is new, however, is that you can use them now for all cavity classes, further reducing the number of products needed for restorations.

### Even faster within the workflow

In combination with Adhese Universal and Bluephase PowerCure, you benefit from a coordinated product portfolio. Including consistent and short curing times starting from 3 seconds.

### Optimized inventory management

Having one universal composite with fewer shades means fewer orders, reduced stock and fewer expired products. This not only saves time but also money.

### It doesn't get any easier

	Tetric plus Flow	Tetric plus Fill
Cavity classes	I, II, III, IV, V	
Maximum layer thickness	4 mm <sup>[11]</sup>	
Shortest curing time	3 s <sup>[12]</sup>	

[10] Compared to competitors  
[11] Note the maximum layer thickness of 3.5 mm for the shade A3.5 plus when choosing a curing time of either 3 s or 5 s.  
[12] With Bluephase PowerCure in the 3sCure mode (light intensity of 2700–3300 mW/cm<sup>2</sup>).  
Only suitable for class I and II restorations in the posterior region, light cured from the occlusal aspect.



### Tetric plus starter kits

#### Tetric plus starter kit syringe

- 2 x OptraGate 2
- 1 x 2 ml Adhese Universal VivaPen
- 1 x 2-g syringe Tetric plus Flow A2 plus
- 1 x 2-g syringe Tetric plus Flow A3 plus
- 1 x 3-g syringe Tetric plus Fill A2 plus
- 1 x 3-g syringe Tetric plus Fill A3 plus
- 1 x OptraGloss Spiral Wheel HP
- 1 x Tetric plus Shade Guide

#### Tetric plus starter kit mixed

- 2 x OptraGate 2
- 1 x 2 ml Adhese Universal VivaPen
- 1 x 2-g syringe Tetric plus Flow A2 plus
- 1 x 2-g syringe Tetric plus Flow A3 plus
- 20 x 0.2 g Tetric plus Fill A2 plus
- 20 x 0.2 g Tetric plus Fill A3 plus
- 1 x OptraGloss Spiral Wheel HP
- 1 x Tetric plus Shade Guide



# Direct restorative treatment for efficient esthetics

Our coordinated products for direct restorative treatments allow you to fabricate high-quality, esthetic restorations with increased efficiency.



## Isolate

Relaxed and efficient treatments with OptraGate 2



## Bond

Efficient bonding with the Adhese Universal VivaPen



## Restore

Count on Tetric plus – the new simplified universal composite



## Cure

High curing performance delivered by Bluephase PowerCure



## Polish

Shiny surfaces produced with OptraGloss



## Care

Effective prevention with Fluor Protector S