

all for **one**
one for all



wave • **one**®



Pre-op x-ray



Post-op x-ray 1



Post-op x-ray 2

Dr. Julian Webber BDS, MS
Specialist Endodontist,
The Harley Street Centre for Endodontics,
London, England

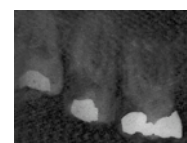


«The unique features of wave•one® enabled me to successfully shape the 4 canals of tooth 16. Even the severe curvature of the 2 merging MB canals and the apical curvature of the DB was no problem for the unique reciprocating action of wave•one®. I used wave•one® Primary to length in all canals. A perfect shape for effective irrigation and three dimensional obturation with gutta percha using Calamus Dual. With wave•one® I can now use just one NiTi file to shape the canal instead of four. You can't get better than that! wave•one® will be my exclusive choice from now on.»

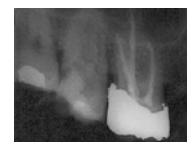


Dr. Sebastian Crudden BDS
General Practitioner, Private Practice,
Co Antrim, Northern Ireland

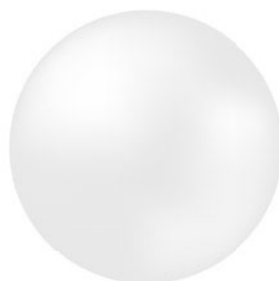
«wave•one® has improved the speed of my root canal treatments greatly. Because I only need to use a single instrument instead of multiple files, the filing technique and the obturation process become far simpler. Two 45 minute appointments for hand filing can now be completed in a single appointment.»



Pre-op x-ray



Post-op x-ray



Simplicity is the real innovation

Reciprocating technology

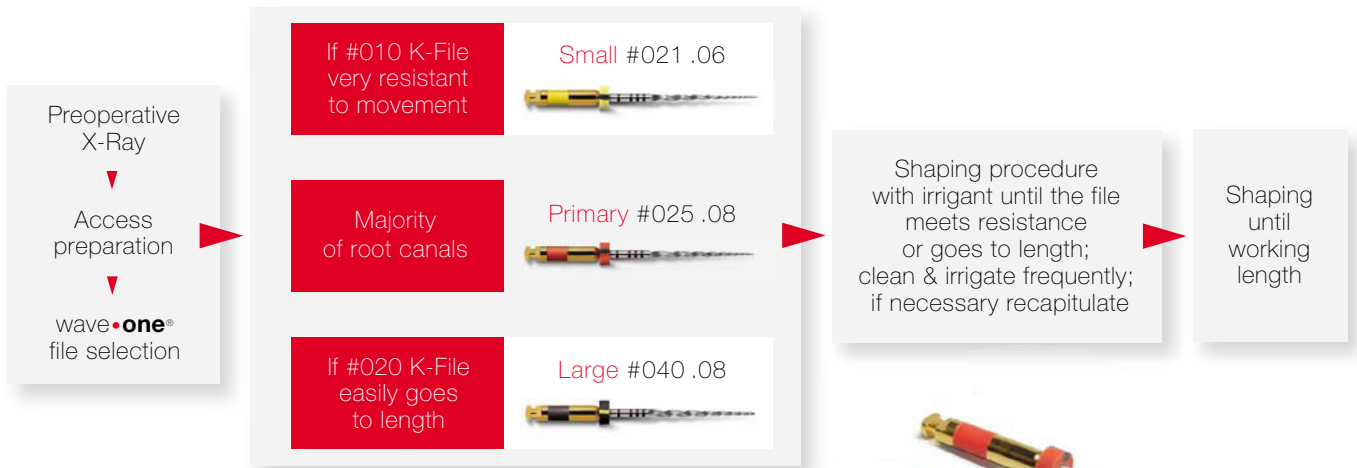
- Only one NiTi instrument per root canal in most cases
- Respect of the root canal anatomy
- Reduced risk of a screwing effect and file breakage*
- Saves time by up to 40% and increases comfort

* Compared to leading brands

Single patient use as new standard of care

- No need for disinfecting, cleaning, sterilizing and organizing the wave•one® NiTi files
- No risk for cross contamination

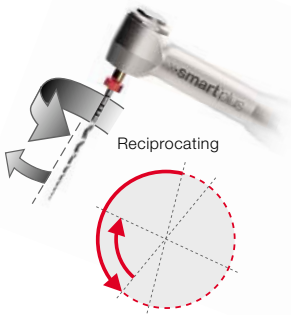
Clinical Procedure



- The wave•one® instruments must only be used in reciprocating motion with appropriate Dentsply motors
- For more information please refer to the wave•one® DFU



Single file technique through unique design and reciprocation

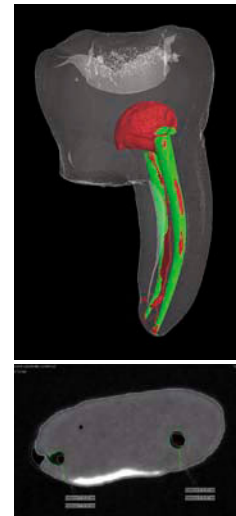


wave•one® works in a reciprocating mode, which means that it continuously changes its rotating direction during the shaping procedure:

- A large rotating angle in the cutting direction provides high efficiency.
- A smaller angle in the reverse direction helps the wave•one® file to successively progress along the canal path, whilst respecting the root canal anatomy.
- The optimized angles also reduce the risk of a screwing effect and file breakage.

The advantages of the reciprocating technique are numerous. First of all, it makes it possible to shape most root canals using only one single wave•one® Nickel-Titanium file. This means that no time is wasted changing NiTi instruments during the root canal shaping procedure.

Using one single wave•one® rotary file for each shaping procedure, instead of four to five, also makes it affordable to implement a single patient policy for endodontic instruments.



The wave•one® file has a geometry that was conceived specifically in order to bring a maximum of user benefits from the reciprocating movement of the x•smart™ plus motor. This geometry, combined with the proprietary Dentsply M-Wire® Nickel-Titanium technology are the main reasons for the superior performance of the wave•one® file compared to most NiTi files on the market today.





Reciprocating files



wave•one® **small** reciprocating file

REF A 0700 2210 0 S01 - **3x** small (021 .06) - 21 mm + DFU

REF A 0700 2250 0 S01 - **3x** small (021 .06) - 25 mm + DFU

REF A 0700 2310 0 S01 - **3x** small (021 .06) - 31 mm + DFU



wave•one® **primary** reciprocating file

REF A 0700 2210 0 P01 - **3x** primary (025 .08) - 21 mm + DFU

REF A 0700 2250 0 P01 - **3x** primary (025 .08) - 25 mm + DFU

REF A 0700 2310 0 P01 - **3x** primary (025 .08) - 31 mm + DFU



wave•one® **large** reciprocating file

REF A 0700 2210 0 L01 - **3x** large (040 .08) - 21 mm + DFU

REF A 0700 2250 0 L01 - **3x** large (040 .08) - 25 mm + DFU

REF A 0700 2310 0 L01 - **3x** large (040 .08) - 31 mm + DFU



wave•one® **assortment** reciprocating file

REF A 0700 2219 0A01 assorted - 21 mm

1x small (021 .06) + **1x** primary (025 .08) + **1x** large (040 .08) + DFU

REF A 0700 2259 0A01 assorted - 25 mm

1x small (021 .06) + **1x** primary (025 .08) + **1x** large (040 .08) + DFU

REF A 0700 2319 0A01 assorted - 31 mm

1x small (021 .06) + **1x** primary (025 .08) + **1x** large (040 .08) + DFU



Endo motor

x•smart^{plus}

REF A 1032 Complete motor with contra-angle and universal AC adaptor

REF A 1033 x•smart^{plus} 6:1 contra-angle



Oven

thermaprep® **2** oven for wave•one®

REF A 0176 2300 0200 - EU (230V)

REF A 0176 2300 0233 - UK (230V)

REF A 0176 1150 0200 - (115V)

Kit

x•smart^{plus} wave•one® kit

Kit with complete motor, wave•one® and PathFile™ files

REF A 1035-1

x•smart^{plus} endo motor

5 blisters wave•one® primary reciprocating file 25 mm (15 files)

5 blisters wave•one® assortment reciprocating file 25mm (15 files)

1 pack PathFile™ assortment 25 mm (6 files)

wave•one® DVD and clinical procedure card



Paper points



wave•one® paper points **small**

REF A 024W 000 00S 01 - **180x** sterile paper points small



wave•one® paper points **primary**

REF A 024W 000 00P 01 - **180x** sterile paper points primary



wave•one® paper points **large**

REF A 024W 000 00L 01 - **180x** sterile paper points large



wave•one® paper points **assortment**

REF A 024W 000 900 01 - **60x** sterile paper points small
60x sterile paper points primary - **60x** sterile paper points large



Gutta percha points



wave•one® gutta percha points **small**

REF A 024X 000 00S 00 - **60x** gutta percha small



wave•one® gutta percha points **primary**

REF A 024X 000 00P 00 - **60x** gutta percha primary



wave•one® gutta percha points **large**

REF A 024X 000 00L 00 - **60x** gutta percha large



wave•one® gutta percha points **assortment**

REF A 024X 000 900 00 - **20x** gutta percha small
20x gutta percha primary - **20x** gutta percha large



Obturators



wave•one® **small** obturators

REF A 1700 000 10S 00 - **6x** small obturators

REF A 1700 000 11S 00 - **20x** small obturators



wave•one® **primary** obturators

REF A 1700 000 10P 00 - **6x** primary obturators

REF A 1700 000 11P 00 - **20x** primary obturators



wave•one® **large** obturators

REF A 1700 000 10L 00 - **6x** large obturators

REF A 1700 000 11L 00 - **20x** large obturators