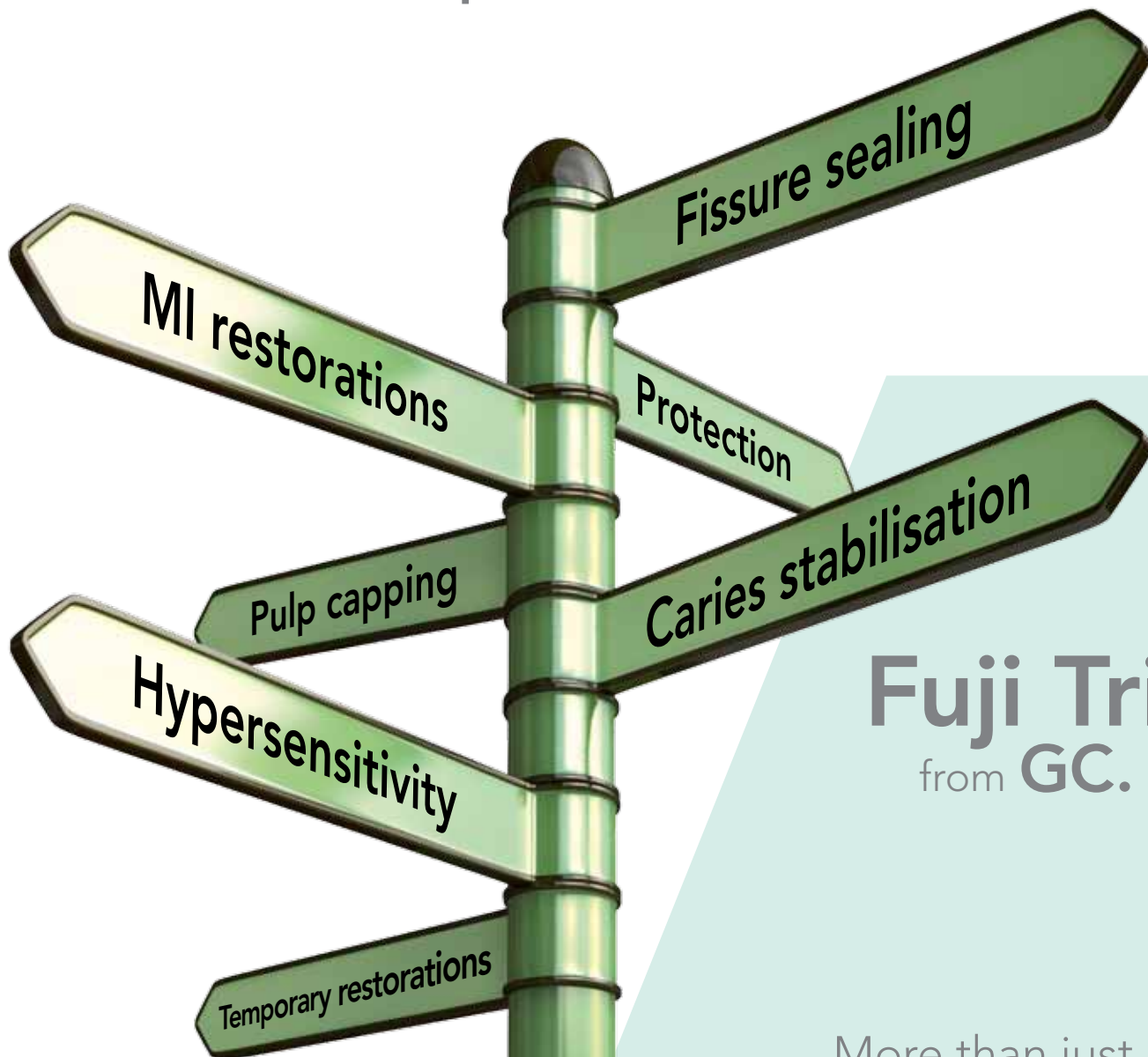


Guiding the way to caries
stabilisation and
surface protection



Fuji Triage
from GC.

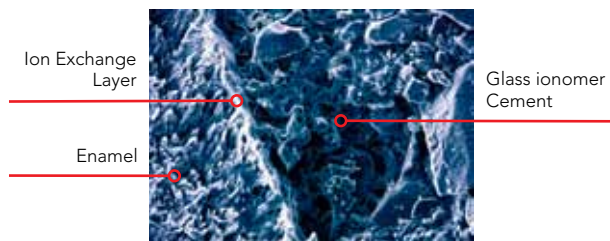
More than just a sealant
Works where others won't

GC

Superior protection precisely when and where you need it

Child, adult or senior, each of them can benefit from the protection and fortification Fuji Triage offers. This unique glass ionomer cement, with moisture tolerance and extreme high fluoride release is the ideal partner for patient and dentist in many cases!

- Self-adhesion and strong marginal seal without bonding or etching



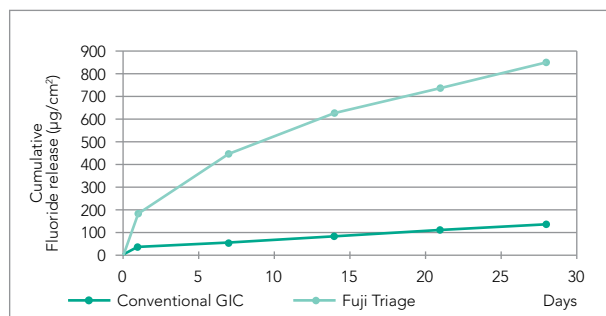
SEM Picture. Dr H. Ngo.
An ion exchange layer is visible which represents a strong chemical union

- Aesthetic white colour or light pink colour for visualisation and monitoring



Optimal viscosity for flow and retention where it is placed

- 6 times higher fluoride release for ultimate protection



The fluoride release rate is six times that of conventional glass ionomer - much higher than resin sealants.

GC R&D internal data, test details available on demand.

- The fluidity and moisture tolerance of Fuji Triage help it penetrate into deep pits and fissures



Dr. M. Blique, France



Dr. M. Basso, Italy

Moisture tolerance allows placement without the need for isolation or rubber dam.

- Work at your own pace: self-set in 4 minutes or accelerated command set in just 20 to 40 sec*



Dr. E. Van Amerongen, Netherlands

*Accelerated command set is only available for Fuji Triage Pink

Protect fissures of erupting Molars at the earliest stage

Protecting the newly-erupted immature molar, which is highly vulnerable to acid attack during the first 12 to 18 months, is critical.

In contrast to composite resins, Fuji Triage bonds chemically to enamel and dentin in a moist environment and also protects the tooth surface from acid and bacterial attack.

Fissure sealing: step by step



Remove plaque from fissures and the remaining occlusal surface. No bonding - no etching.



The thin nozzle and fluidity of Fuji Triage help it penetrate into deep fissures. Several applications are possible with just 1 capsule.



The setting reaction of Fuji Triage can be accelerated (command setting) with heat from a light-curing device.



The pink colour helps visualisation during placement and monitoring, and facilitates communication.

Dr. M. Blique, France

Simple and effective protection for young patients

Proven and effective in a wide range

Fuji Triage is a versatile product for the prevention and control of caries. It is specifically designed to preserve healthy tooth structure and to promote remineralisation.

Caries stabilisation

When a patient presents multiple active lesions, the use of Fuji Triage will **seal** open cavities and **arrest** caries progression. Caries stabilisation techniques are particularly helpful when treating **elderly, dental phobic, medically compromised and very young patients.**



Dr. H. Ngo, Australia

Only soft dentin is removed using an ultra-slow hand piece or hand instruments. 2 mm of clean margins will be prepared at the periphery for an optimized seal. Fuji Triage will seal the demineralised dentin and release fluoride to help remineralise it.

Indirect pulp capping

In very deep cavities the layer of **softer demineralised dentine above the pulpal floor is left intact** to avoid pulpal exposure,** and to **provide the opportunity for internal remineralisation.**



Dr. H. Ngo, Australia

Fuji Triage is placed to create an effective seal and allow the dentine overlying the pulpal floor to heal.

Minimal invasive restorations

The increasing use of **minimal preparation techniques** has created the need for a **more flowable** glass ionomer that **adapts well to micro-prepared cavities.** Fuji Triage White is the preferred solution due to its viscosity, fast set, smooth surface finish and aesthetics.



Dr. M. Basso, Italy

Micro preparation can be performed using ultra-fine diamond burs, air abrasion or ozone therapies.

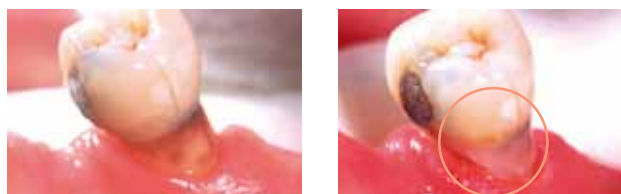
** Providing the patient does not present with symptoms of irreversible pulpitis

Active protection

of clinical situations

Root surface protection and cervical erosion

Exposed root surfaces are at risk of **demineralisation associated with caries and erosion**. It is now possible to **actively protect** these at-risk surfaces by applying a thin film of Fuji Triage onto the root surface.



Dr. H. Ngo, Australia

Root surface protection should be monitored, especially in patients with reduced saliva flow and diminished buffering capacity.

Hypersensitivity treatment

Fuji Triage's chemically-fused seal stops the flow of fluid in the dentinal tubules, thereby providing **instant and long-lasting relief from hypersensitivity**.



Dr. J. Freuden, Netherlands

Seal then dentinal tubules with Fuji Triage without prior etching or bonding.

Intermediate restorations

Fuji Triage is a great evidence-based choice for temporary and intermediate restorations. It provides superior protection against bacteria compared to zinc oxide/eugenol and zinc phosphate cements. Fuji Triage also helps prevent secondary caries.

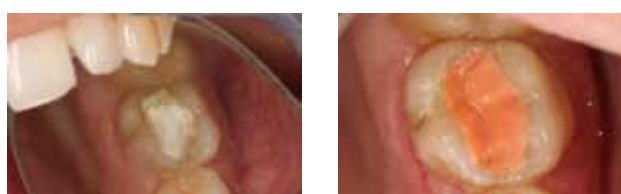


Dr. Jo Lafargues, France

Using the light pink shade, Fuji Triage is clearly identifiable to the patient as a temporary solution. If preferred, Fuji Triage White can be used.

Temporary endodontic sealing

When applied immediately after root canal filling, Fuji Triage will ensure **an effective coronal seal** against microleakage and the fluoride release helps prevent future potential contamination.



Dr. A. Baraba, Croatia

After root canal therapy, Fuji Triage is an ideal base for lamination, e.g., under composite restorations.

Maximum surface protection

in a few easy steps



1. Mechanically remove plaque from the fissures using a brush cone.



2. Apply GC Dentin Conditioner to further clean the occlusal surface. Avoid over-drying the surface after rinsing.



3. Spread a thin film of Fuji Triage over the occlusal surface, including pits and fissures.



4. Command set activation (accelerated self-set) in 20 – 40 seconds* or self-set in 4 minutes.



5. Apply GC Fuji Varnish or GC Fuji Coat LC immediately following placement.

Dr. E. Van Amerongen,
Netherlands

* Accelerated command set is only available for Fuji Triage Pink



GC Fuji Triage

Fuji Triage Capsules

50 capsules, (mixed volume per capsule 0.13 ml)

Fuji Triage Powder Liquid

1-1 package: 15 g powder, 10 g (8 ml) liquid, 6 g (5.7 ml) Dentin Conditioner, powder scoop, mixing pad

Available in White and Pink.

Accessories for optimal results

To increase adhesion:

GC Cavity Conditioner / GC Dentine Conditioner

To prevent dehydration after the initial set:

GC Fuji Varnish / GC Fuji Coat LC

GC EUROPE N.V.

Head Office
Researchpark
Haasrode-Leuven 1240
Interleuvenlaan 33
B – 3001 Leuven
Tel. +32.16.74.10.00
Fax. +32.16.40.48.32
info@gceurope.com
http://www.gceurope.com

GC UNITED KINGDOM Ltd.

12-15 Coopers Court
Newport Pagnell
UK – Bucks. MK16 8JS
Tel. +44.1908.218.999
Fax. +49.1908.218.900
info@uk.gceurope.com
http://uk.gceurope.com

