



# One and only G-BOND™ from GC.

One-component, one-coat bonding system  
for light-cured composites

Advanced 7<sup>th</sup> generation bonding with  
"nano-interaction" technology



**GC**

The **ONLY** ONE  
you need –  
so why waste  
anymore **time?**



**G-BOND** in less than 30 seconds  
you're done and  
ready to move on.

A one-component, one-coat, advanced seventh generation bonding system, G-BOND gives you a strong, long-lasting bond between light-cured composite and both enamel and dentin, very quickly and very easily. And this time after time because it's unlike any other bonding system available. With G-BOND you can etch, desensitise, prime and bond, all with just ONE coat.

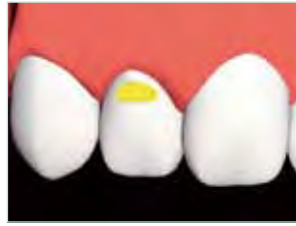
G-BOND is not technique sensitive so you don't have to worry about 'how wet' or 'how dry' the tooth surface is or whether its 'over-etched' or 'under-etched', taking the guesswork out of the procedure. G-BOND is very easy to use, simply brush the formulation onto the tooth's bonding

surface, wait 5–10 seconds, then air thin with high pressure syringe air and light-cure for 10 seconds.

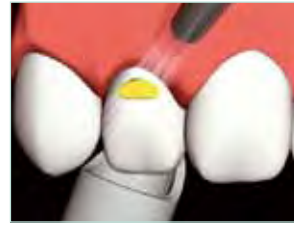
Try NEW easy-to-use G-BOND today and save time, prevent sensitivity and obtain reliable bonding without the guesswork.



**Apply one coat of G-BOND with a brush to both dentine and enamel**



**Leave undisturbed for 5–10 seconds**



**Thin with high pressure syringe air**



**Light cure**

#### No post-operative sensitivity

Because the dentin tubules are never exposed, G-BOND virtually eliminates post-operative sensitivity. G-BOND's 5% filler further seals the tubules and decreases pulpal sensitivity.

#### Nano-interaction technology

The success of G-BOND lies in its ability to form a non-conventional interface with the dentin with minimal decalcification and almost no exposure to collagen fibres. We call this interface a "nano-interaction zone" or NIZ. This nano-level reaction produces an insoluble calcium compound for a better bond that is less likely to deteriorate due to oral enzymes.

#### Strong, reliable, consistent bond

Whether wet or dry, on dentin or enamel, G-BOND produces a strong mechanical bond as well as, and more importantly, a reliable, consistent chemical bond thanks to a highly advanced formulation that contains phosphoric ester monomer for superior bonding strength to enamel, and 4-met monomer for adhesion to dentin.

#### Remarkably thin, bubble free bonding layer

G-BOND's nano-interaction technology creates a thin bonding layer of less than 300 nm. After application, maximum airflow will eliminate all air bubbles resulting in a thin layer that offers numerous advantages, including a frosty surface for much easier application of the first composite layer.

#### HEMA-free

While other products continue to use HEMA for its wetting properties, GC recognised that HEMA stays hydrophilic after polymerisation and so leading to water uptake, discolouration and possible loss of retention. G-BOND contains no HEMA in its formulation, resulting in strong durable adhesion properties.

#### Stable and simple to store

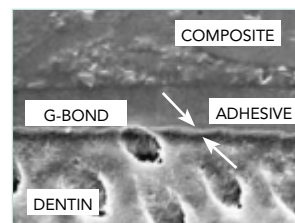
G-BOND is an extremely stable material and can be stored at room temperature for up to two years. The bottle cap should be replaced immediately after use.



**Dentin surface after G-BOND application: (7000x SEM) shows demineralised smear sealing effect on the dentinal tubules**



**Enamel after G-BOND application: (7000x SEM) shows demineralisation of the smear layer and enamel crystal formations**



**G-BOND's bubble free interface and nano-interaction zone (NIZ) (less than 300 nm)**



**G-BOND's frosty surface for much easier application of the first composite layer**



### GC G-BOND™ Bottle Kit

Contains: One 5 ml bottle of G-BOND, one package of 50 micro-tips, one micro-tip handle, one dispensing dish and technique card.



### GC G-BOND™ Unit Dose Kit

Contains: 50 x 0.1 ml Unit Doses of G-BOND, one package of 50 green disposable applicators and technique card.

# Aesthetics made easy with GC.



### GC GRADIA DIRECT

A light-cured composite for dentists to create quickly and easily, natural-looking, high performance anterior or posterior restorations. A simple single shade technique is usually sufficient but when required a selection of special shades can be added.



### GC GRADIA DIRECT Flo

A micro-filled hybrid resin for lining cavities beneath GRADIA DIRECT. It has a free-flowing, no-run/no-stick formula that shapes perfectly to cavity walls, it is radiopaque and light-curable.

**GC EUROPE N.V.**  
Head Office  
Researchpark Haasrode-Leuven 1240  
Interleuvenlaan 33  
B - 3001 Leuven  
Tel. +32.16.74.10.00  
Fax. +32.16.40.48.32  
info@gceurope.com  
<http://www.gceurope.com>

**GC UNITED KINGDOM Ltd.**  
12-15, Coopers Court  
Newport Pagnell  
UK - Bucks. MK16 8JS  
Tel. +44.1908.218.999  
Fax. +44.1908.218.900  
info@uk.gceurope.com  
<http://uk.gceurope.com>

