



G-ænial from GC

The all-round restorative for straightforward invisible restorations.

Introducing the age-specific shade selection system.



Create æ-motion with **G-ænial** from **GC**

The search is over. For an all-round restorative with outstanding invisible aesthetics, look no further than **G-ænial** from **GC**.

Are you looking for the most **effortless way to create invisibility** in your restorations? GC presents **G-ænial Anterior** and **Posterior**, two light-cured restoratives that were developed using **GC's** extensive expertise and knowledge of dental materials together with suggestions from loyal **Gradia Direct** users.

You can depend on the years of experience and industry know-how that went into creating G-ænial to **reinforce your aesthetic skills and ability to match every restoration with nature.**

G-ænial is your material of choice when it comes to key differentiators such as:

Shade system	Viscosity	Radiopacity	Physical properties
Manipulation	Polishability	Aesthetics	Colour stability

G-ænial embodies all these important characteristics into one user-friendly restorative that is indicated for:

All restorative classes



Highly aesthetic single shade or multi-shade build-ups



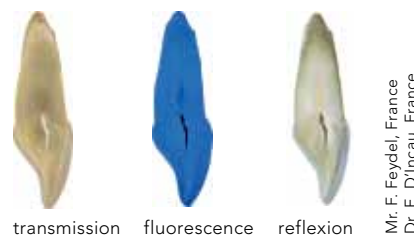
Natural reflectivity creates invisibility

The challenge for each dentist is to create perfectly invisible restorations which satisfy the patients in a limited amount of time. However, copying the natural colour and reflection of a tooth is difficult. It took all GC's expertise to develop the **unique composition** of G-ænial, which makes its **optical properties match those of a natural tooth**.

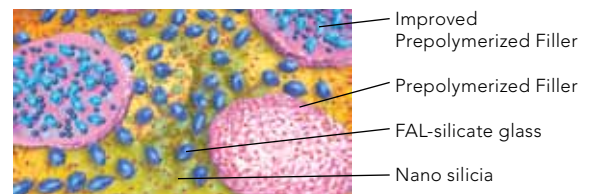
A Unique Composition for a Natural Reflectivity

Our perception of the appearance of teeth is defined by the reflection of light from different angles. This process of **light reflection from the inside of a natural tooth** is determined by differences in structure, such as **enamel crystals, dentinal tubules, peritubular dentin and the dentin/enamel junction**. The internal structure of G-ænial consists of **diverse multifaceted structures** – a variety of particles that gives the material its **unique light scattering property and mimics the reflective capabilities of a natural tooth**.

The amount of each particle, its size and distribution within G-ænial is carefully calculated so that when combined, several different interfaces are created with various reflective properties. This results in an **internal reflectivity which accurately reproduces that of natural tooth**.

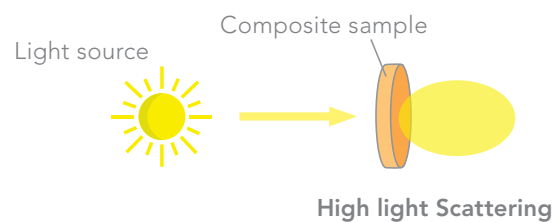
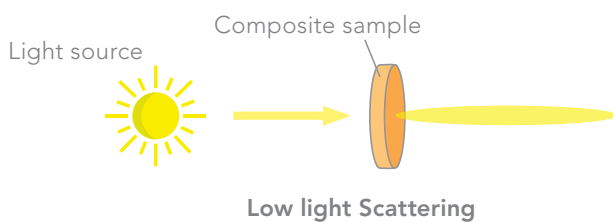


Composition of G-ænial



High light scattering for guaranteed invisibility

Light scattering occurs when light is forced to deviate from its straight trajectory.



Thanks to its high light scattering properties, G-ænial will blend perfectly with the surrounding cavity. The **chameleon effect** which can be achieved with **just one shade** of G-ænial is of such a high standard that the restoration not only matches the surrounding natural tooth, **it blends and becomes aesthetically invisible**.



Initial situation: cavity in a composite block; shade A3

Cavity filled with competitor's material – low light scattering composite; shade A2

Cavity filled with G-ænial – high light scattering composite; shade A2

Outstanding invisible aesthetics

G-ænial offers flexibility to the dentist. All techniques are possible when adopting G-ænial: from aesthetically invisible single shades to aesthetic masterpieces in a multi-shade build-up.

With a single shade, a G-ænial restoration is aesthetically 'invisible'.

The range of restorative materials that are currently available on the market do not always suit the way in which dentists work nowadays. Often, a compromise must be made between aesthetics and simplicity.

Now, you don't have to settle for less and can offer your patients **the very best aesthetic restorations with one shade**, by using G-ænial from GC.

Approximately 95% of direct restoration procedures employ only one shade of restorative. This is done because it speeds up the process and **minimizes chair-side time**. When you use G-ænial, you will have the confidence in knowing that even single shade restorations will provide beautiful aesthetics, which will **make your patients happy** too.



Further outstanding high-end aesthetics is achieved when additional shades are employed.

Aesthetic results for more demanding cases using 2 or 3 shades are now also possible with the help of an **advanced shading system** that was designed with G-ænial. This means that even layering is simplified.

For complex aesthetic cases, you can blend G-ænial perfectly with the surrounding tooth structure by adding further shades **without sacrificing the simplicity or spending additional time**.



Forward-thinking

shading concept

Standard Shades

There are 22 different shades based on the classical VITA* shade system. For cases where no layering is required, the use of Standard Shades is sufficient to produce guaranteed results: **what you see is what you get**. Available in both the Anterior and Posterior versions, each is a **delicate balance between hue, chroma, value and translucency**.



Special Shades

Although for the majority of cases, excellent aesthetics can be achieved with just a single shade; there may be times when a multi-shade technique is preferred, such as when extensive restoration is required. The G-ænial range offers two types of additional shades to choose from, called Special Shades which are placed **underneath** (Inside shades) or **on top** (Outside shades) of a Standard Shade.

Outside Special Shades – to replace enamel

A common technique in restorative dentistry is to relate the colour and translucency of the natural enamel to **the age of the patient**. The choice of the enamel shade is made accordingly.



JE
Junior Enamel
for young patients



AE
Adult Enamel
for adult patients



SE
Senior Enamel
for senior patients

Outside Special Shades – to create specific visual effects



TE
Translucent Enamel
simulates a depth-effect in restorations



IE
Incisal Enamel
can be applied on the enamel occlusal third and proximal surfaces, particularly with young patients



CVE
Cervical Enamel
offers the right translucency to let the darker cervical dentin shine through

Inside Special Shades – to add opacity

These are opaque shades which are placed underneath a Standard Shade **to add warmth** to the final colour and eradicate the characteristic **‘dark shine’** throughout the mouth. Available only in the G-ænial Anterior version there are three Inside Special Shades.



AO2



AO3



AO4

Enjoy the effortless handling

On top of this G-ænial Anterior and Posterior bring you all the properties required for superb, long-lasting restorations.

Easy Handling

G-ænial is one of the few composite materials that really qualify as being **user-friendly**, thanks to its **advanced shade system** and because it is a unique composite that offers **effortless manipulation**.

GC is confident that you will enjoy the handling of G-ænial because of how its **consistency and working times** are suited to the restorative classes:

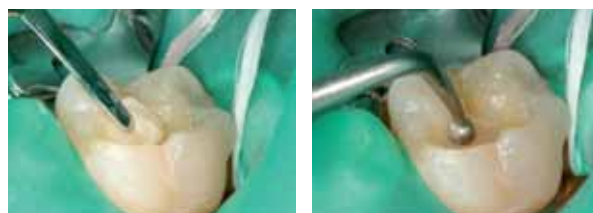
G-ænial Anterior



The consistency of G-ænial Anterior is the same as Gradia Direct Anterior. The material has been tested for more than 6 years with a resulting unanimous agreement that **its consistency is what makes the material so noteworthy**.

The working time is around 4 minutes under ambient light, which allows for stress-free work in cases where multi-layer restorations are required.

G-ænial Posterior



The viscosity of this material has been adapted accordingly as posterior applications often require a material that is **more packable**. With this consistency, G-ænial Posterior is **easy to sculpt, thixotropic and adapts well to cavity walls**.

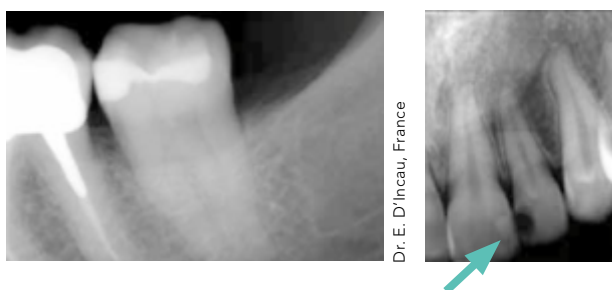
Good polishability

For improved aesthetics, G-ænial Anterior and Posterior **polish quickly and easily to a smooth, glossy surface**.



The ideal properties for long-lasting aesthetics

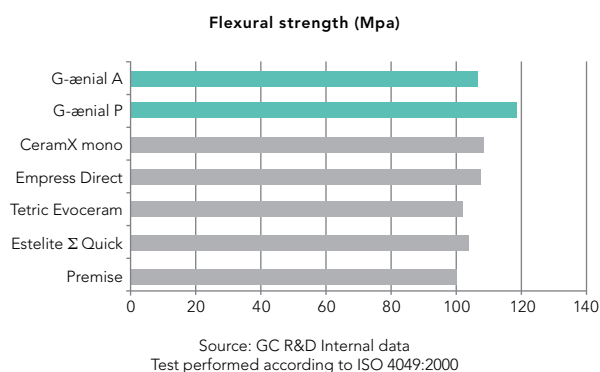
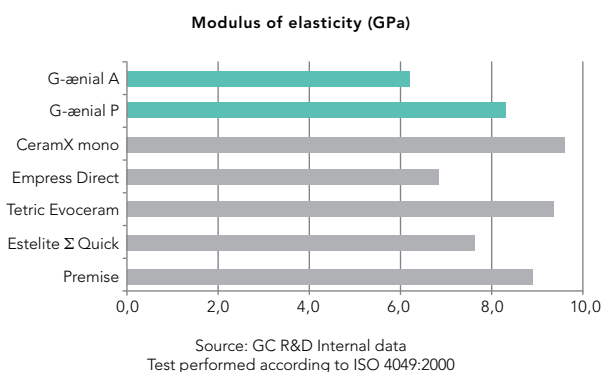
Simplified follow-ups



Although aesthetically invisible, both G-ænial Anterior and Posterior are easily traceable through x-rays. Featuring a unique and GC **patented High-Density Radiopaque (HDR) Technology**, the radiopacity of G-ænial is significantly increased without compromising aesthetics.

Tough and flexible

G-ænial Anterior and Posterior have a high fracture toughness and flexural strength combined with a low modulus of elasticity to avoid bending and occlusal forces, as well as the spreading of cracks. All the right properties **to guarantee very durable restorations.**





SYRINGES

Quick Start Kit 7 syringes of:

A1, A2, A3, B2, JE, AE, IE and a shade guide

Advanced Kit 7 syringes of:

A3.5, AO2, AO3, B1, B3, C3, TE

Refill

1 syringe of all available colours

UNITIPS

Quick Start Kit 5 unitips each of:

A1, A2, A3, B2, JE, AE, IE and a shade guide

Advanced Kit 5 unitips each of:

A3.5, AO2, AO3, B1, B3, C3, TE

Refill

20 unitips of: A1, A2, A3, A3.5, AO3, CV, AE, IE,

PA1, PA2, PA3, PA3.5, PJE, PIE

10 unitips of: BW, A4, B1, B2, B3, C3, CVD, AO2,

AO4, JE, TE, SE, CVE, XBW

VITA® is a registered trademark of VITA Zahnfabrik, Bad Säckingen

SHADES ANTERIOR

Standard: BW, A1, A2, A3, A3.5, A4, B1, B2, B3, C3, CVD, XBW, CV

Inside special: AO2, AO3, AO4

Outside special: JE, AE, SE, IE, TE, CVE

SHADES POSTERIOR

Standard: P-A1, P-A2, P-A3, P-A3.5

Outside special: P-JE, P-IE

ACCESSORIES

Shade guide, Unitip Applier

Content per unitip: 0.16 mL (0.28 g)

for anterior and 0.16 mL (0.33 g) for posterior

Content per syringe: 2.7 mL (4.7 g)

for anterior and 2.7 mL (5.5 g) for posterior

GC EUROPE N.V.

Head Office
Researchpark Haasrode-Leuven 1240
Interleuvenlaan 33
B-3001 Leuven
Tel. +32.16.74.10.00
Fax. +32.16.40.48.32
info@gceurope.com
<http://www.gceurope.com>

GC UNITED KINGDOM Ltd.

12-15, Coopers Court
Newport Pagnell
UK-Bucks. MK16 8JS
Tel. +44.1908.218.999
Fax. +44.1908.218.900
info@uk.gceurope.com
<http://uk.gceurope.com>