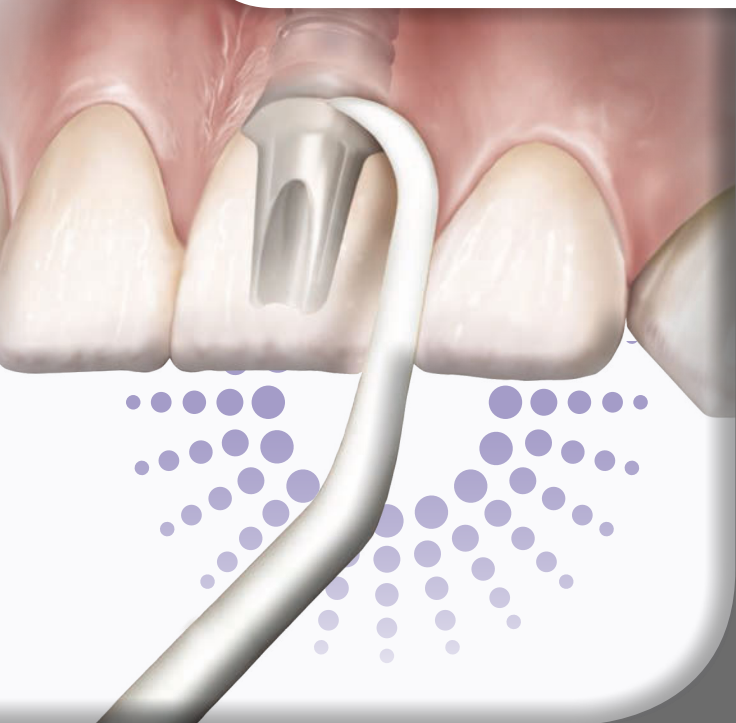




# INTRODUCING IMPLACARE™ II

*New from Hu-Friedy*



## FACT

Research has demonstrated the relationship between peri-implant surface alterations and the development of peri-implant mucositis and peri-implantitis.<sup>1</sup>

## CHALLENGE

Clinicians must be able to effectively clean implants with minimal alteration of abutment surfaces because altered surfaces can be a source for plaque accumulation, which can lead to peri-implant mucositis and peri-implantitis.

## SOLUTION

Implacare II scalers, Hu-Friedy's latest development in implant maintenance, provide thinner working ends and new designs that allow you to better adapt to and effectively scale implants while causing the least amount of alteration to implant abutment surfaces.<sup>2</sup>

## POINTS OF PERFORMANCE

- **Made of PLASTEEL™:** A high grade, unfilled resin that causes the least amount of alteration to implant abutment surfaces<sup>2</sup>
- **20% thinner tip design:** Allows for improved access to implant abutment surfaces and allows for more effective maintenance and care of implants
- **Two NEW universal curette designs:** The Barnhart 5/6 and Langer 1/2 join the Columbia 4R/4L, 204S, and H6/H7 to provide a well-rounded set of options so you can select the instrument best suited for each patient's needs

SEE FULL LISTING OF IMPLACARE II  
TIPS & KITS ON THE BACK.

<sup>1</sup> Bollen CM, Papaioanno W, Van Eldere J, et al: The influence of abutment surface roughness on plaque accumulation and peri-implant mucositis, Clin Oral Implants Res 7:201-111, 1996.  
<sup>2</sup> Data on file.

How the best perform

**Hu-Friedy**

## UNIVERSAL CURETTE

Blade designed with two cutting edges and a rounded toe that allows for adaptation on all surfaces.



### NEW Langer 1/2

IMPLLG1/26  
Implacare™ II LG1/2 Kit  
(Handle & 12 Pairs)

IMPLLG1/2  
Implacare II LG1/2 12 Refill  
(12 Pairs)

*Combines the angles of a Gracey Curette with the dual cutting edges of a universal curette.*



### NEW Barnhart 5/6

IMPLBH5/66  
Implacare II BH5/6 Kit  
(Handle & 12 Refill Pairs)

IMPLBH5/6  
Implacare II BH5/6 Refill  
(12 Pairs)



### Columbia 4R/4L

IMPL4R/4L6  
Implacare II 4R/4L Kit  
(Handle + 12 Refill Pairs)

IMPL4R/4L  
Implacare II 4R/4L Refill  
(12 Pairs)

## SICKLE SCALER

Dual cutting blades that come to a point designed for removal of supragingival debris.



### H6/7

IMPLH6/76  
Implacare II H6/H7 Kit  
(Handle & 12 Refill Pairs)

IMPLH6/7  
Implacare II H6/H7 Refill  
(12 Pairs)

*Shank angulation provides accessibility to all anterior or premolar surfaces.*

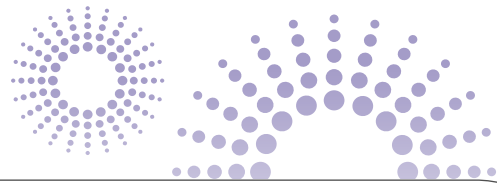


### 204S

IMPL204S6  
Implacare II 204S Kit  
(Handle & 12 Refill Pairs)

IMPL204S  
Implacare II 204S Refill  
(12 Pairs)

*Provides optimal access in the posterior for supragingival interproximal scaling.*



## ADDITIONAL OPTIONS

### Implacare II Intro Kit

IMPLINTRO6

#### Includes:

- 1 Implacare II handle
- 1 Columbia 4R/4L pair
- 1 204S pair
- 1 H6/H7 pair
- 1 Barnhart 5/6 pair
- 1 Langer 1/2 pair

### Implacare II Assorted Options

IMPLSORT6 (includes handle)

IMPLSORT

#### Both sets above include:

- 4 Columbia 4R/4L pairs
- 4 204S pairs
- 4 H6/H7 pairs

### Implant Maintenance Starter Kit

IMPKITII

#### Includes:

- Colorvue® handle
- 3 Colorvue tips
- 1 Implacare II handle
- 5 Implacare II tip pairs

Visit us online at [Hu-Friedy.com](http://Hu-Friedy.com)

Call 1-800-Hu-Friedy or contact your authorized Hu-Friedy representative for more information.  
©2012 Hu-Friedy Mfg. Co., LLC. All rights reserved. HF-2202/0912.

