

*Easily sealed -
optimally protected*



SHIELD FORCE *PLUS*

Protective sealant for hypersensitive teeth

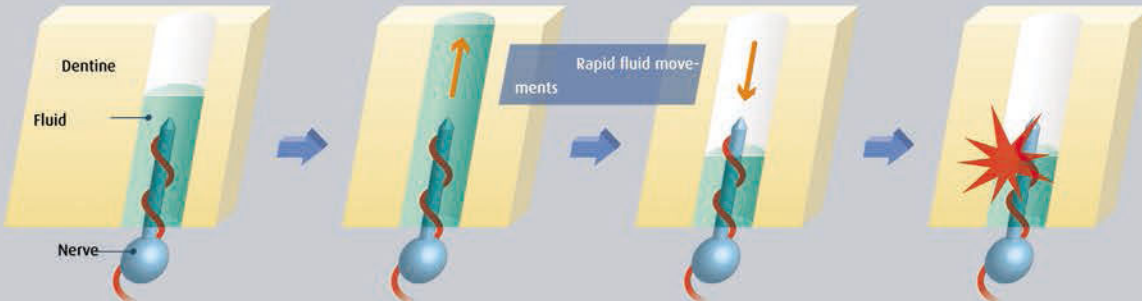
Protective shield for hypersensitive teeth

- + Rapid and effective treatment of hypersensitive dentine
- + Excellent sealing
- + Long-lasting protective layer
- + Easy to use

Just one application - no irrigation, no rubbing in!

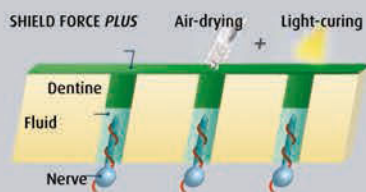
SHIELD FORCE PLUS

Mechanism - hypersensitive dentine

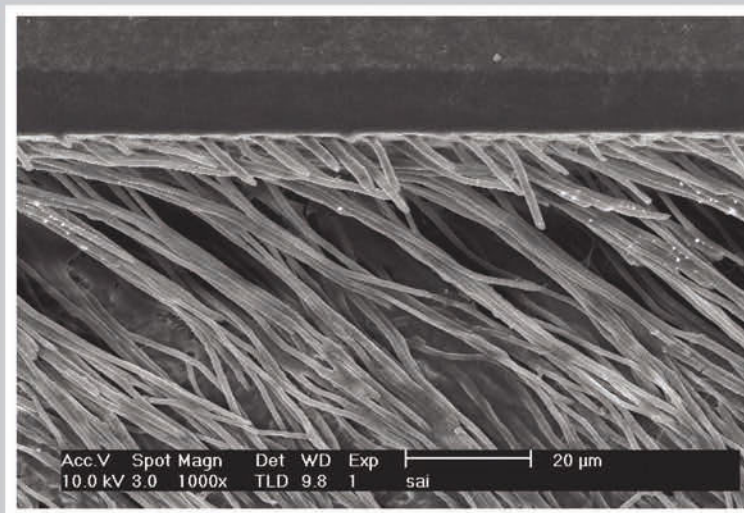


Dentine hypersensitivity is caused by rapid fluid movements in the dentinal tubules.

Sealing the tubules with SHIELD FORCE PLUS



TOKUYAMA SHIELD FORCE PLUS infiltrates and seals the dentinal tubules, thus preventing pain-inducing hydrostatic pressure in the tubules

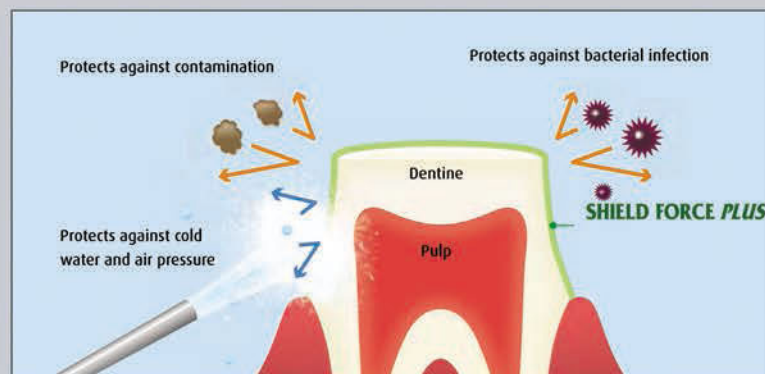


Shield Force Plus forms compact plastic villi inside the dentinal tubules. 1,000x magnification.

Data: Research & Development Tokuyama Dental Corp.

Excellent sealing effect

SHIELD FORCE PLUS relieves tooth hypersensitivity that is induced by cold water or air pressure. SHIELD FORCE PLUS also protects the tooth from accidental bacterial contamination and postoperative sensitivity when used under restorations.



Shield Force Plus reduces hypersensitivity immediately using patented Tokuyama, "Self-Reinforcing Monomer (SR Monomer)"

Long-lasting protective layer

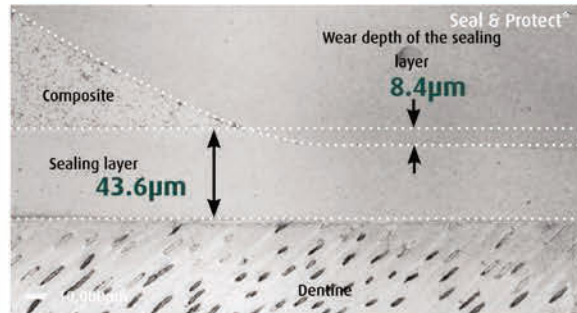
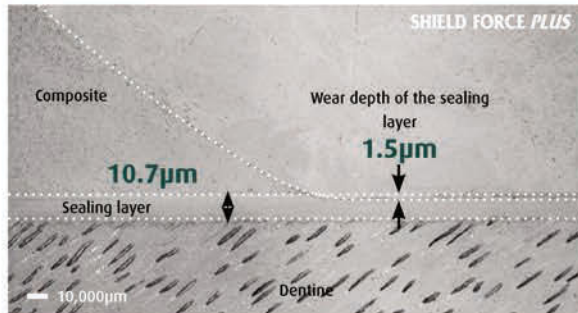
The long-lasting, protective layer of SHIELD FORCE PLUS effectively and reliably reduces abrasion and erosion of exposed dentine.

SR Monomer demonstrates exceptional resistance to toothbrush abrasion despite that the protective layer is extremely thin.



Test setup for the abrasion test. 10,000 cycles at a weight load of 400g.

Toothbrush abrasion test - 10,000 cycles



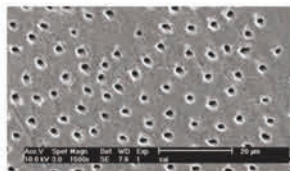
The sealing layer of SHIELD FORCE PLUS (Tokuyama) is only 10.7µm thick, as opposed to 43.6µm in the case of Seal & Protect (Dentsply).

The wear of SHIELD FORCE PLUS is only 1.5µm whilst the wear of Seal & Protect is 8.4µm.

Thermal cycling test (10,000 cycles) at 4°C – 60°C **

SHIELD FORCE PLUS (Tokuyama)

Sealing layer of SHIELD FORCE PLUS remains intact after the thermal cycling test.



Hypersensitive dentine model



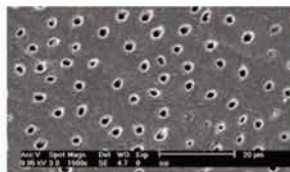
After the application of SHIELD FORCE PLUS



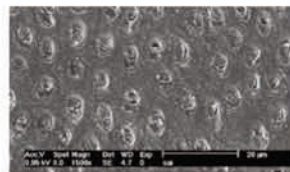
After the thermal cycling test (10,000 x)

Gluma® Desensitizer (Heraeus Kulzer)

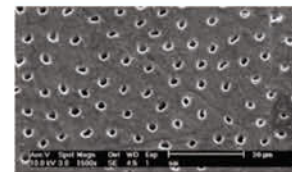
Sealing layer of Gluma® Desensitizer washes out during the thermal cycling test.



Hypersensitive dentine model



After the application of Gluma® Desensitizer



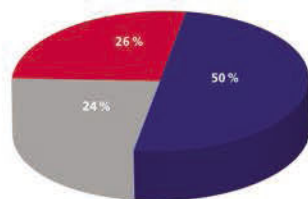
After the thermal cycling test (10,000 x)

* Not a trademark owned by Tokuyama Dental Corp.
** Data: Research & Development Tokuyama Dental Corp.

Dental Barometer survey – analysis

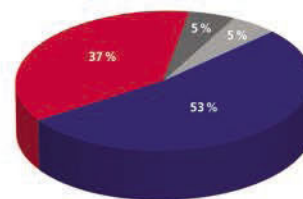
SHIELD FORCE PLUS was the subject of a survey among German dentists, which was conducted in collaboration with Tokuyama and the Dental Barometer journal. In a successful practice test SHIELD FORCE PLUS demonstrated its outstanding properties and convinced numerous users.

For which indications have you used SHIELD FORCE PLUS?



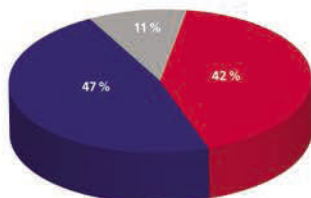
- 50% Treatment of hypersensitive dentine
- 24% Reduction of the abrasion/erosion of exposed cervical dentine
- 26% Relief/prevention of tooth sensitivity after preparation for direct and indirect restorations

In how many patients do you normally use a desensitizer in the practice?



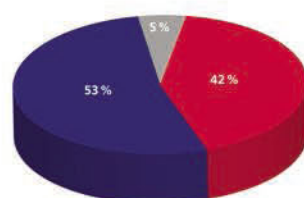
- 5% = Over 70%
- 5% = 50-70%
- 53% = 25-50%
- 37% = 0-25%

What is your assessment of SHIELD FORCE PLUS with regard to handling properties?



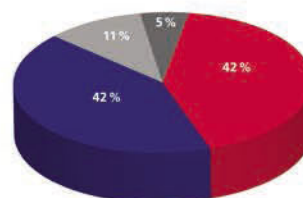
- 42% = Very good
- 47% = Good
- 11% = No response

Would you purchase SHIELD FORCE PLUS instead of the material you use at present?



- 42% = Yes
- 53% = Perhaps
- 5% = No response

What is your assessment of SHIELD FORCE PLUS compared to your current desensitizer?



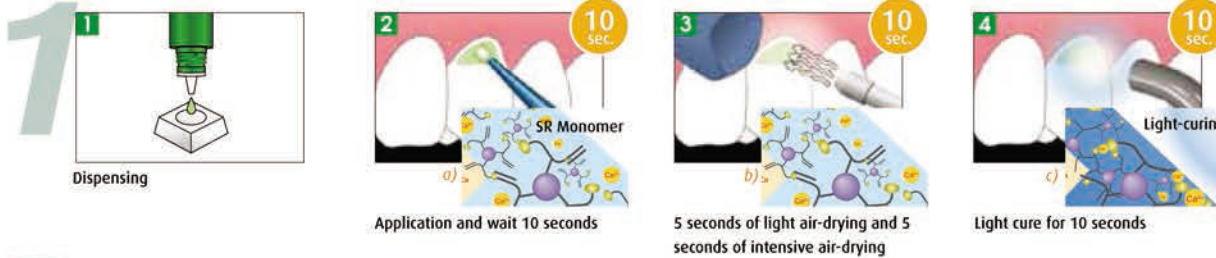
- 42% Better
- 42% Slightly better
- 11% Same
- 5% No response



SHIELD FORCE PLUS

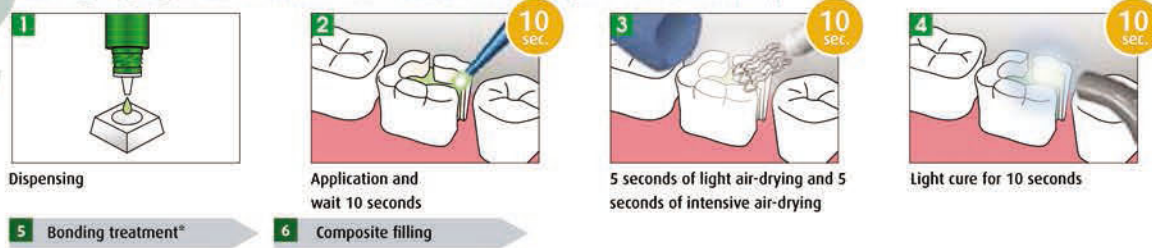
Easy handling One application – no irrigation – no rubbing in

Treatment of hypersensitive dentine | protective layer for exposed dentine



a) The monomer interacts with calcium ions and seals the tubules.
 b) A thin protective layer forms on the dentine surface and in the tubules during air-drying.
 c) Then the protective layer is cured by light polymerisation.

2 Sealing a prepared tooth to relieve sensitivity (direct restoration)



* If a total-etch system is being used, the etching gel must be applied **AFTER** the application of SHIELD FORCE PLUS.

5 Bonding treatment* → 6 Composite filling

3 Sealing a prepared tooth to relieve sensitivity (indirect restoration)



** Before an impression is taken the dentine surface must be cleaned with alcohol to remove the inhibition layer, which can prevent a good impression.

5 Impression taking → 6 Temporary filling, cement application*** → 7 Permanent restoration

*** To insert the temporary restoration no materials should be used which are plastic-based because they are not compatible with SHIELD FORCE PLUS. In conjunction with SHIELD FORCE PLUS you are advised to use eugenol-free cement for temporary cementation and also for provisional fillings.



SHIELD FORCE PLUS

COMPLETE SET

- Bottle, 3ml
- Microbrush, 25 pcs.
- Mixing dish, 1 pc.

REFILL

- Bottle, 3ml

Distributor

TRYCARE DENTAL

Manufacturer



Hotline: +49 (0)2505 938513 | Fax: +49 (0)2505 938515
 www.tokuyama-dental.de | info@tokuyama-dental.de