

CAD-CAM



Product Catalog





CAD-CAM Overview

Adin's CAD - CAM components and digital libraries enable dentists and dental technicians to design and manufacture state-of-the-art restorations supported by Adin's implants, using current and up-to-date digital restoration processes.

The variety of components ensure endless restorative optionsa for treatment of single, partially, or full edentulous cases.

Scan Body

The Scan Body is a component used as a digital transfer for intraoral scanner and other scanners. The unique geometry and texture of Adin's Scan Bodies optimize the effectiveness of the scanning process. Scan Bodies are available for all of Adin's implant connection platforms & for Adin's TMA abutments – differing in height to accommodate all clinical scenarios.

Features

- Solid unique geometry design for scanning between teeth & special texture validated for powder-less scanning procedure
- Ti alloy material is used to achieve a durable and accurate component.
- Innovative 3D Scan Body files designed for optimal matching & accuracy enabling 35 μ technology
- Reusable- designed for use with both Desktop & Intraoral scanners
- Available in two different heights for maximum clinical fit in the occlusion
- Retaining Screw is included easy to use - laser marked for platform & height



Digital Model Analog

The Digital Model Analog for 3D printed model is used in a fully digital CAD-CAM solution. Digital Model Analog can be used based on intra-oral or a desk-top scan to create a digital model, this can be done simultaneously to CAD-CAM restoration planning.

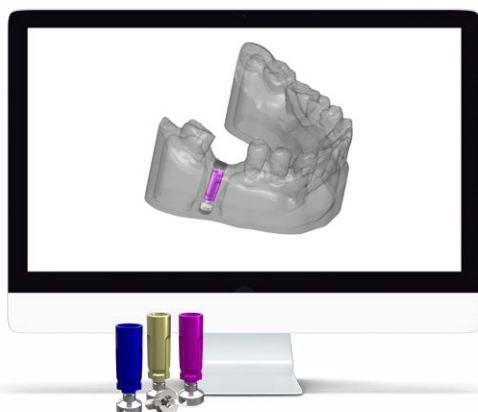
The analog ensures exact positioning in the 3D printed model thanks to 3D printed optimized geometry and a designated lock screw.

Both leads to an accurate restoration planning and simulation.

Adin's digital model analogs are easy to use and enable prosthetics screw tightening according to Adin recommended torque.

The distinguishing between the different platforms is clear due to color coding of the analogs.

The digital model analog provides a solution for all type of restoration used in the dental industry.

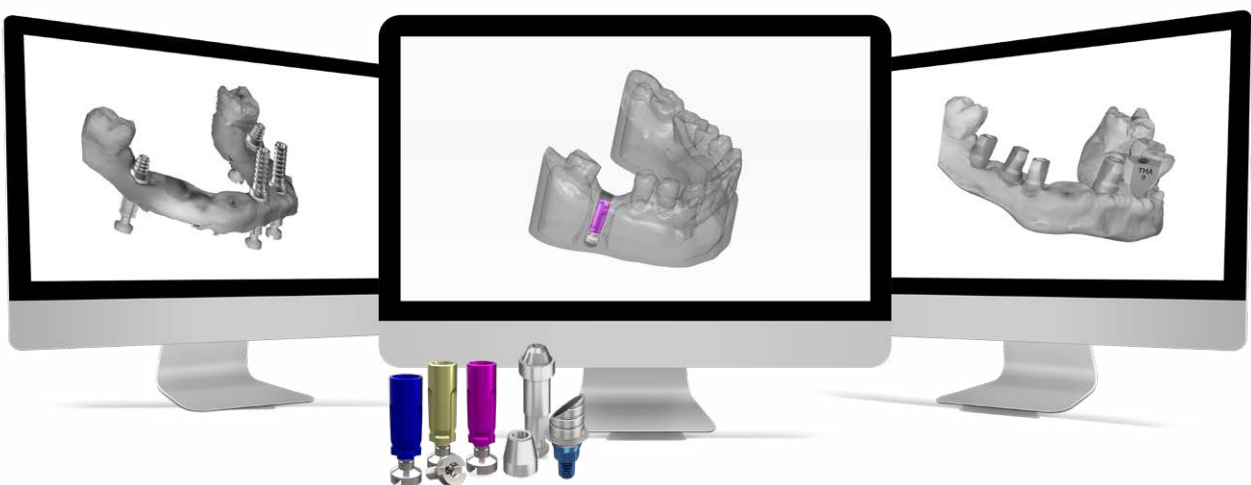
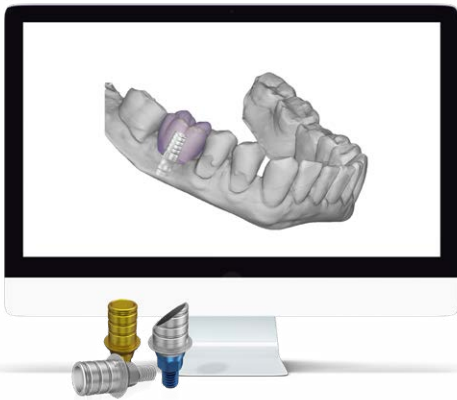


Ti Bases

A Ti base is used to restore a dental implant using CAD-CAM solutions. For this purpose, a superstructure is cemented onto the Ti base and can be used as the abutment or directly bolted screw, Adin's Ti bases available in different gingival & restorative height to ensure maximum adaptation for the case needs.

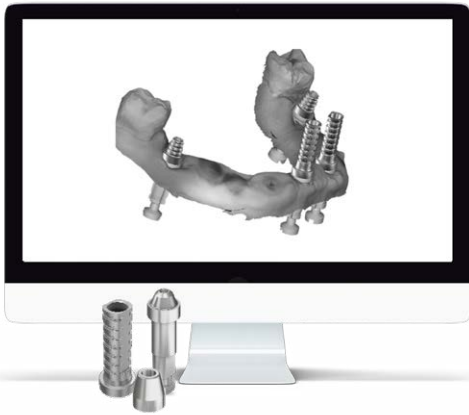
Features

- Wide variations of gingival and restorative height, to fit any clinical situation
- Available in the following configurations:
 1. Engaging (anti-rotation connection for single-unit restoration)
 2. Non-engaging variations (connection that allows rotation for multi-unit restorations)
 3. Angular engaged Ti Base (for anterior tooth restoration)
- For all Adin's implants connections
- Supported two modes of use: screw retained and cement retained
- Retaining Screw is included



TMA Cylinder & Cementing Cone

TMA-MU Cementing Cone and Temporary cylinder are used as Ti-Bases for cementing CAD-CAM screw retain restoration (permanent and Temporary) to the TMA.



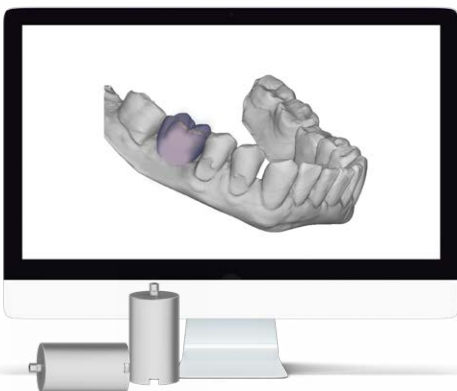
Features

- Enable precise and long lasting contact between CAD-CAM restoration and TMA-MU abutments
- Support cemented and screw retained restoration
- Support bridge (non-engaged) restorations
- Designed with large cementing surface and grooves for high stability and best fit adhesion
- Dedicated Library for temporary restorations

Ti Blanks

Pre-milled Adin Ti Blanks are used as a raw material for CAM fabrication of a single part (monolithic) titanium abutment. The production of the individual abutment is done digitally with CAD software.

Adin Ti Blanks abutments are intended for use with dental implants as a support for single or multiple tooth restoration in the maxilla or mandible of a partially or fully edentulous patient.

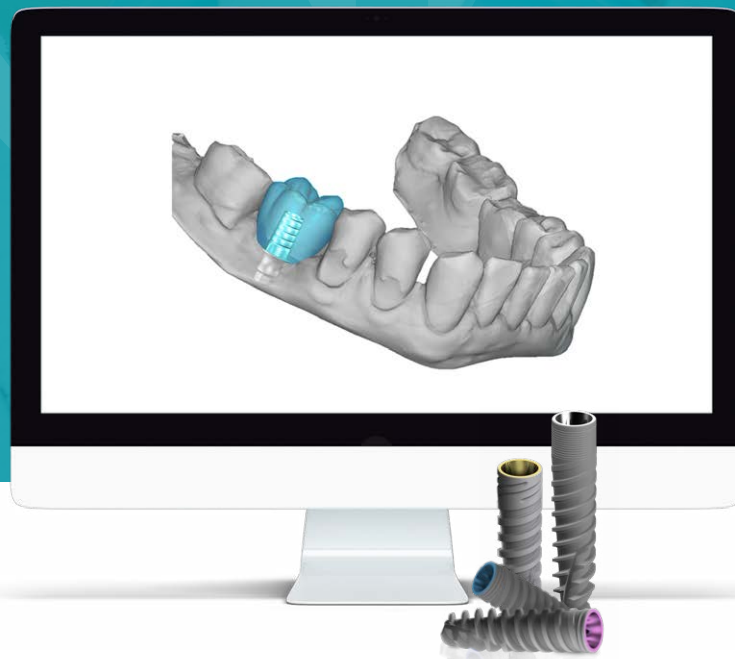


Features

- Titanium Blanks, for using as customized abutments, are available for all Adin's implant platforms
- Different sizes of $\varnothing=11.5\text{mm}$ and $\varnothing=15.8\text{mm}$ to accommodate all clinical needs
- Adin's Titanium Blanks are Medentika PreFace[®] standard compatible
- Material: Titanium (Ti 6Al 4V ELI)
- As customized abutment, the final milled part needs no additional manual manipulation

* Availability of the products in a contrary is limited and depends on local regulation. For more information, please contact your local representative

Conical Connection



Ø 2.75 Ø 3.0 Ø 3.5 Ø 4.3 Ø 5.0

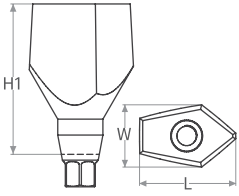


CloseFit™ - UNP | NP | RP | WP

CloseFit™ UNP

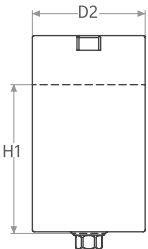

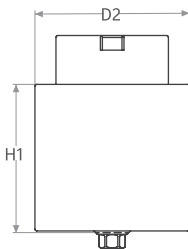

Ultra Narrow Platform for narrowest ridges and tight spaces



Scan body | For Intra-oral and Desktop Scanner

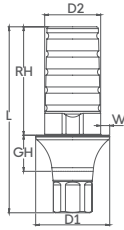
	UNP CloseFit™ Scan Body 7mm	UNP CloseFit™ Scan Body 10mm
		
Catalog No.	UNP0088	UNP0089
Retaining Screw Included	UNP0001	UNP0001
Material	Ti 6Al 4V ELI	Ti 6Al 4V ELI
Dimensions	H1: 7 mm W: 4.2 mm L: 6.7 mm	H1: 10 mm W: 4.5 mm L: 6.9 mm

Ti Blanks | For Medentika PreFace® Holders

	UNP CloseFit™ Ti Pre Milled MDTK Abutment Blank Ø11.5mm		UNP CloseFit™ Ti Pre Milled MDTK Abutment Blank Ø15.8mm
			
Catalog No.	UNP1711	Catalog No.	UNP1715
Retaining Screw Included	UNP0001	Retaining Screw Included	UNP0001
Material	Ti 6Al 4V ELI	Material	Ti 6Al 4V ELI
Dimensions	H1: 15.4 mm D2: Ø11.5 mm	Dimensions	H1: 15.4 mm D2: Ø15.8 mm
Intended Use	customized abutment for single unit	Intended Use	customized abutment for single unit

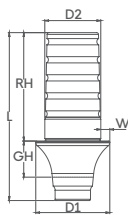
Ti Bases

Engaged



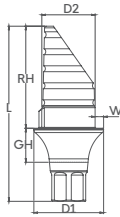
		RH	GH	D1	D2	L	W
TB06411	Ti Base UNP Abutment, RH 4mm GH 1.5mm Engaged	4	1.5	4.1	3.1	7.8	0.5
TB06421	Ti Base UNP Abutment, RH 4mm GH 2mm Engaged	4	2	4.1	3.1	8.3	0.5
TB06431	Ti Base UNP Abutment, RH 4mm GH 3mm Engaged	4	3	4.1	3.1	9.3	0.5
TB06441	Ti Base UNP Abutment, RH 4mm GH 4mm Engaged	4	4	4.1	3.1	10.3	0.5
TB06611	Ti Base UNP Abutment, RH 6mm GH 1.5mm Engaged	6	1.5	4.1	3.1	9.8	0.5
TB06621	Ti Base UNP Abutment, RH 6mm GH 2mm Engaged	6	2	4.1	3.1	10.3	0.5
TB06631	Ti Base UNP Abutment, RH 6mm GH 3mm Engaged	6	3	4.1	3.1	11.3	0.5
TB06641	Ti Base UNP Abutment, RH 6mm GH 4mm Engaged	6	4	4.1	3.1	12.3	0.5
TB06811	Ti Base UNP Abutment, RH 8mm GH 1.5mm Engaged	8	1.5	4.1	3.1	11.8	0.5
TB06821	Ti Base UNP Abutment, RH 8mm GH 2mm Engaged	8	2	4.1	3.1	12.3	0.5

Non Engaged



		RH	GH	D1	D2	L	W
TB06412	Ti Base UNP Abutment, RH 4mm GH 1.5mm Non Engaged	4	1.5	4.1	3.1	6.8	0.5
TB06422	Ti Base UNP Abutment, RH 4mm GH 2mm Non Engaged	4	2	4.1	3.1	7.3	0.5
TB06432	Ti Base UNP Abutment, RH 4mm GH 3mm Non Engaged	4	3	4.1	3.1	8.3	0.5
TB06442	Ti Base UNP Abutment, RH 4mm GH 4mm Non Engaged	4	4	4.1	3.1	9.3	0.5
TB06612	Ti Base UNP Abutment, RH 6mm GH 1.5mm Non Engaged	6	1.5	4.1	3.1	8.8	0.5
TB06622	Ti Base UNP Abutment, RH 6mm GH 2mm Non Engaged	6	2	4.1	3.1	9.3	0.5
TB06632	Ti Base UNP Abutment, RH 6mm GH 3mm Non Engaged	6	3	4.1	3.1	10.3	0.5
TB06642	Ti Base UNP Abutment, RH 6mm GH 4mm Non Engaged	6	4	4.1	3.1	11.3	0.5
TB06812	Ti Base UNP Abutment, RH 8mm GH 1.5mm Non Engaged	8	1.5	4.1	3.1	10.8	0.5
TB06822	Ti Base UNP Abutment, RH 8mm GH 2mm Non Engaged	8	2	4.1	3.1	11.3	0.5

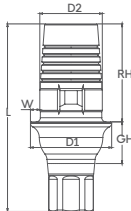
Angular Engaged



		RH	GH	D1	D2	L	W
TB06413	Ti Base UNP Abutment, RH 4mm GH 1.5mm Angular Engaged	4	1.5	4.1	3.1	7.8	0.5
TB06423	Ti Base UNP Abutment, RH 4mm GH 2mm Angular Engaged	4	2	4.1	3.1	8.3	0.5
TB06433	Ti Base UNP Abutment, RH 4mm GH 3mm Angular Engaged	4	3	4.1	3.1	9.3	0.5
TB06443	Ti Base UNP Abutment, RH 4mm GH 4mm Angular Engaged	4	4	4.1	3.1	10.3	0.5
TB06613	Ti Base UNP Abutment, RH 6mm GH 1.5mm Angular Engaged	6	1.5	4.1	3.1	9.8	0.5
TB06623	Ti Base UNP Abutment, RH 6mm GH 2mm Angular Engaged	6	2	4.1	3.1	10.3	0.5
TB06633	Ti Base UNP Abutment, RH 6mm GH 3mm Angular Engaged	6	3	4.1	3.1	11.3	0.5
TB06643	Ti Base UNP Abutment, RH 6mm GH 4mm Angular Engaged	6	4	4.1	3.1	12.3	0.5
TB06813	Ti Base UNP Abutment, RH 8mm GH 1.5mm Angular Engaged	8	1.5	4.1	3.1	11.8	0.5
TB06823	Ti Base UNP Abutment, RH 8mm GH 2mm Angular Engaged	8	2	4.1	3.1	12.3	0.5

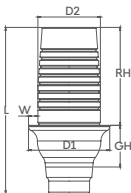
C-Type Ti Bases | For further product information and use please refer to IFU028

Engaged



		RH	GH	D1	D2	L	W	Post
TB06414	C-Type Ti Base UNP Abutment, GH 1.5mm Engaged	4.7	1.5	3.9	3	8.5	0.45	Small
TB06424	C-Type Ti Base UNP Abutment, GH 2mm Engaged	4.7	2	3.9	3	9	0.45	Small
TB06434	C-Type Ti Base UNP Abutment, GH 3mm Engaged	4.7	3	3.9	3	10	0.45	Small
TB06444	C-Type Ti Base UNP Abutment, GH 4mm Engaged	4.7	4	3.9	3	11	0.45	Small

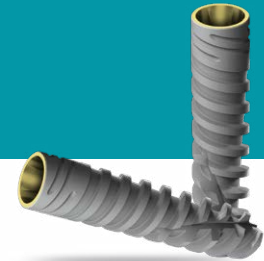
Non Engaged



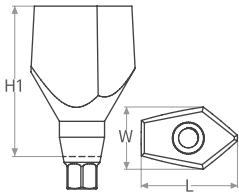

		RH	GH	D1	D2	L	W	Post
TB06415	C-Type Ti Base UNP Abutment, GH 1.5mm Non Engaged	4.7	1.5	3.9	3	8.5	0.45	Small
TB06425	C-Type Ti Base UNP Abutment, GH 2mm Non Engaged	4.7	2	3.9	3	9	0.45	Small
TB06435	C-Type Ti Base UNP Abutment, GH 3mm Non Engaged	4.7	3	3.9	3	10	0.45	Small
TB06445	C-Type Ti Base UNP Abutment, GH 4mm Non Engaged	4.7	4	3.9	3	11	0.45	Small

CloseFit™ NP

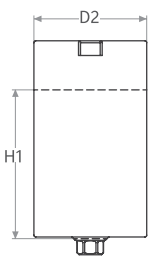
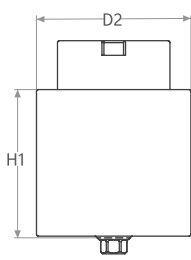
Narrow Platform for narrow ridges and tight spaces



Scan body | For Intra-oral and Desktop Scanner

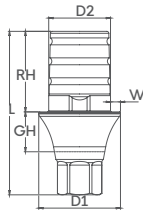
	NP CloseFit™ Scan Body 7mm	NP CloseFit™ Scan Body 10mm
		
Catalog No.	NP0088	NP0089
Retaining Screw Included	NP0001	NP0001
Material	Ti 6Al 4V ELI	Ti 6Al 4V ELI
Dimensions	H1: 7 mm W: 4.2 mm L: 6.7 mm	H1: 10 mm W: 4.5 mm L: 6.9 mm

Ti Blanks | For Medentika PreFace® Holders

	NP CloseFit™ Ti Pre Milled MDTK Abutment Blank Ø11.5mm		NP CloseFit™ Ti Pre Milled MDTK Abutment Blank Ø15.8mm
			
Catalog No.	NP1111	Catalog No.	NP1115
Retaining Screw Included	NP0001	Retaining Screw Included	NP0001
Material	Ti 6Al 4V ELI	Material	Ti 6Al 4V ELI
Dimensions	H1: 15.4 mm D2: Ø11.5 mm	Dimensions	H1: 15.4 mm D2: Ø15.8 mm
Intended Use	customized abutment for single unit	Intended Use	customized abutment for single unit

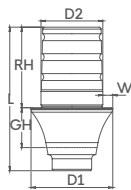
Ti Bases

Engaged



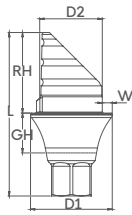
		RH	GH	D1	D2	L	W
TB02411	Ti Base NP Abutment, RH 4mm GH 1.5mm Engaged	4	1.5	4.1	3.1	7.7	0.5
TB02421	Ti Base NP Abutment, RH 4mm GH 2mm Engaged	4	2	4.1	3.1	8.2	0.5
TB02431	Ti Base NP Abutment, RH 4mm GH 3mm Engaged	4	3	4.1	3.1	9.2	0.5
TB02441	Ti Base NP Abutment, RH 4mm GH 4mm Engaged	4	4	4.1	3.1	10.2	0.5
TB02611	Ti Base NP Abutment, RH 6mm GH 1.5mm Engaged	6	1.5	4.1	3.1	9.7	0.5
TB02621	Ti Base NP Abutment, RH 6mm GH 2mm Engaged	6	2	4.1	3.1	10.2	0.5
TB02631	Ti Base NP Abutment, RH 6mm GH 3mm Engaged	6	3	4.1	3.1	11.2	0.5
TB02641	Ti Base NP Abutment, RH 6mm GH 4mm Engaged	6	4	4.1	3.1	12.2	0.5
TB02811	Ti Base NP Abutment, RH 8mm GH 1.5mm Engaged	8	1.5	4.1	3.1	11.7	0.5
TB02821	Ti Base NP Abutment, RH 8mm GH 2mm Engaged	8	2	4.1	3.1	12.2	0.5

Non Engaged



		RH	GH	D1	D2	L	W
TB02412	Ti Base NP Abutment, RH 4mm GH 1.5mm Non Engaged	4	1.5	4.1	3.1	6.7	0.5
TB02422	Ti Base NP Abutment, RH 4mm GH 2mm Non Engaged	4	2	4.1	3.1	7.2	0.5
TB02432	Ti Base NP Abutment, RH 4mm GH 3mm Non Engaged	4	3	4.1	3.1	8.2	0.5
TB02442	Ti Base NP Abutment, RH 4mm GH 4mm Non Engaged	4	4	4.1	3.1	9.2	0.5
TB02612	Ti Base NP Abutment, RH 6mm GH 1.5mm Non Engaged	6	1.5	4.1	3.1	8.7	0.5
TB02622	Ti Base NP Abutment, RH 6mm GH 2mm Non Engaged	6	2	4.1	3.1	9.2	0.5
TB02632	Ti Base NP Abutment, RH 6mm GH 3mm Non Engaged	6	3	4.1	3.1	10.2	0.5
TB02642	Ti Base NP Abutment, RH 6mm GH 4mm Non Engaged	6	4	4.1	3.1	11.2	0.5
TB02812	Ti Base NP Abutment, RH 8mm GH 1.5mm Non Engaged	8	1.5	4.1	3.1	10.7	0.5
TB02822	Ti Base NP Abutment, RH 8mm GH 2mm Non Engaged	8	2	4.1	3.1	11.2	0.5

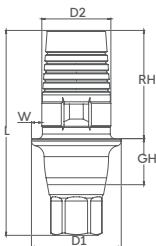
Angular Engaged



		RH	GH	D1	D2	L	W
TB02413	Ti Base NP Abutment, RH 4mm GH 1.5mm Angular Engaged	4	1.5	4.1	3.1	7.7	0.5
TB02423	Ti Base NP Abutment, RH 4mm GH 2mm Angular Engaged	4	2	4.1	3.1	8.2	0.5
TB02433	Ti Base NP Abutment, RH 4mm GH 3mm Angular Engaged	4	3	4.1	3.1	9.2	0.5
TB02443	Ti Base NP Abutment, RH 4mm GH 4mm Angular Engaged	4	4	4.1	3.1	10.2	0.5
TB02613	Ti Base NP Abutment, RH 6mm GH 1.5mm Angular Engaged	6	1.5	4.1	3.1	9.7	0.5
TB02623	Ti Base NP Abutment, RH 6mm GH 2mm Angular Engaged	6	2	4.1	3.1	10.2	0.5
TB02633	Ti Base NP Abutment, RH 6mm GH 3mm Angular Engaged	6	3	4.1	3.1	11.2	0.5
TB02643	Ti Base NP Abutment, RH 6mm GH 4mm Angular Engaged	6	4	4.1	3.1	12.2	0.5
TB02813	Ti Base NP Abutment, RH 8mm GH 1.5mm Angular Engaged	8	1.5	4.1	3.1	11.7	0.5
TB02823	Ti Base NP Abutment, RH 8mm GH 2mm Angular Engaged	8	2	4.1	3.1	12.2	0.5

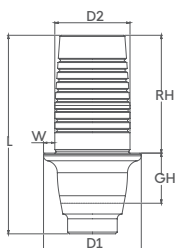
C-Type Ti Bases | For further product information and use please refer to IFU028

Engaged



		RH	GH	D1	D2	L	W	Post
TB02414	C-Type Ti Base NP Abutment, GH 1.5mm Engaged	4.7	1.5	3.9	3	8.36	0.45	Small
TB02424	C-Type Ti Base NP Abutment, GH 2mm Engaged	4.7	2	3.9	3	8.86	0.45	Small
TB02434	C-Type Ti Base NP Abutment, GH 3mm Engaged	4.7	3	3.9	3	9.86	0.45	Small
TB02444	C-Type Ti Base NP Abutment, GH 4mm Engaged	4.7	4	3.9	3	10.86	0.45	Small

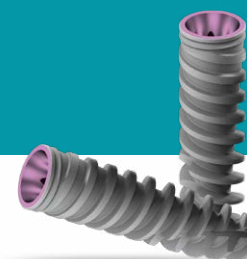
Non Engaged



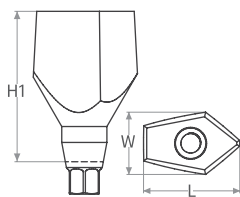
		RH	GH	D1	D2	L	W	Post
TB02415	C-Type Ti Base NP Abutment, GH 1.5mm Non Engaged	4.7	1.5	4.1	3.1	6.8	0.5	Small
TB02425	C-Type Ti Base NP Abutment, GH 2mm Non Engaged	4.7	2	4.1	3.1	7.3	0.5	Small
TB02435	C-Type Ti Base NP Abutment, GH 3mm Non Engaged	4.7	3	4.1	3.1	8.3	0.5	Small
TB02445	C-Type Ti Base NP Abutment, GH 4mm Non Engaged	4.7	4	4.1	3.1	9.3	0.5	Small

CloseFit™ RP

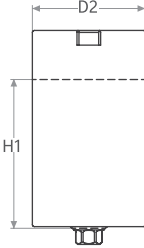
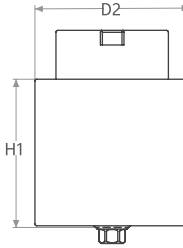


Regular Platform for standard size ridges and spaces



Scan body | For Intra-oral and Desktop Scanner

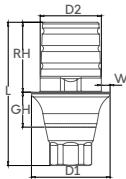


	RP CloseFit™ Scan Body 7mm	RP CloseFit™ Scan Body 10mm
Catalog No.	RP0088	RP0089
Retaining Screw Included	RP0001	RP0001
Material	TI 6Al 4V ELI	TI 6Al 4V ELI
Dimensions	H1: 7 mm W: 4.3 mm L: 6.7 mm	H1: 10 mm W: 4.5 mm L: 6.9 mm

	RP CloseFit™ Ti Pre Milled MDTK Abutment Blank Ø11.5mm		RP CloseFit™ Ti Pre Milled MDTK Abutment Blank Ø15.8mm
			
Catalog No.	RP1211	Catalog No.	RP1215
Retaining Screw Included	RP0001	Retaining Screw Included	RP0001
Material	TI 6Al 4V ELI	Material	TI 6Al 4V ELI
Dimensions	H1: 15.2 mm D2: Ø11.5 mm	Dimensions	H1: 15.2 mm D2: Ø15.8 mm
Intended Use	customized abutment for single unit	Intended Use	customized abutment for single unit

Ti Base

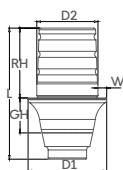
Engaged



RH GH D1 D2 L W

		RH	GH	D1	D2	L	W
TB03411	Ti Base RP Abutment, RH 4mm GH 1mm Engaged	4	1	4.5	3.5	7.2	0.5
TB03421	Ti Base RP Abutment, RH 4mm GH 2mm Engaged	4	2	4.5	3.5	8.2	0.5
TB03431	Ti Base RP Abutment, RH 4mm GH 3mm Engaged	4	3	4.5	3.5	9.2	0.5
TB03441	Ti Base RP Abutment, RH 4mm GH 4mm Engaged	4	4	4.5	3.5	10.2	0.5
TB03611	Ti Base RP Abutment, RH 6mm GH 1mm Engaged	6	1	4.5	3.5	9.2	0.5
TB03621	Ti Base RP Abutment, RH 6mm GH 2mm Engaged	6	2	4.5	3.5	10.2	0.5
TB03631	Ti Base RP Abutment, RH 6mm GH 3mm Engaged	6	3	4.5	3.5	11.2	0.5
TB03641	Ti Base RP Abutment, RH 6mm GH 4mm Engaged	6	4	4.5	3.5	12.2	0.5
TB03811	Ti Base RP Abutment, RH 8mm GH 1mm Engaged	8	1	4.5	3.5	11.2	0.5
TB03821	Ti Base RP Abutment, RH 8mm GH 2mm Engaged	8	2	4.5	3.5	12.2	0.5
TB03831	Ti Base RP Abutment, RH 8mm GH 3mm Engaged	8	3	4.5	3.5	13.2	0.5
TB03841	Ti Base RP Abutment, RH 8mm GH 4mm Engaged	8	4	4.5	3.5	14.2	0.5

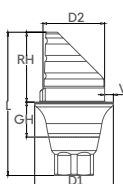
Non Engaged



RH GH D1 D2 L W

		RH	GH	D1	D2	L	W
TB03412	Ti Base RP Abutment, RH 4mm GH 1mm Non Engaged	4	1	4.5	3.5	6.5	0.5
TB03422	Ti Base RP Abutment, RH 4mm GH 2mm Non Engaged	4	2	4.5	3.5	7.5	0.5
TB03432	Ti Base RP Abutment, RH 4mm GH 3mm Non Engaged	4	3	4.5	3.5	8.5	0.5
TB03442	Ti Base RP Abutment, RH 4mm GH 4mm Non Engaged	4	4	4.5	3.5	9.5	0.5
TB03612	Ti Base RP Abutment, RH 6mm GH 1mm Non Engaged	6	1	4.5	3.5	8.5	0.5
TB03622	Ti Base RP Abutment, RH 6mm GH 2mm Non Engaged	6	2	4.5	3.5	9.5	0.5
TB03632	Ti Base RP Abutment, RH 6mm GH 3mm Non Engaged	6	3	4.5	3.5	10.5	0.5
TB03642	Ti Base RP Abutment, RH 6mm GH 4mm Non Engaged	6	4	4.5	3.5	11.5	0.5
TB03812	Ti Base RP Abutment, RH 8mm GH 1mm Non Engaged	8	1	4.5	3.5	10.5	0.5
TB03822	Ti Base RP Abutment, RH 8mm GH 2mm Non Engaged	8	2	4.5	3.5	11.5	0.5
TB03832	Ti Base RP Abutment, RH 8mm GH 3mm Non Engaged	8	3	4.5	3.5	12.5	0.5
TB03842	Ti Base RP Abutment, RH 8mm GH 4mm Non Engaged	8	4	4.5	3.5	13.5	0.5

Angular Engaged

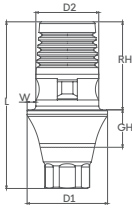


RH GH D1 D2 L W

		RH	GH	D1	D2	L	W
TB03413	Ti Base RP Abutment, RH 4mm GH 1mm Angular Engaged	4	1	4.5	3.5	7.2	0.5
TB03423	Ti Base RP Abutment, RH 4mm GH 2mm Angular Engaged	4	2	4.5	3.5	8.2	0.5
TB03433	Ti Base RP Abutment, RH 4mm GH 3mm Angular Engaged	4	3	4.5	3.5	9.2	0.5
TB03443	Ti Base RP Abutment, RH 4mm GH 4mm Angular Engaged	4	4	4.5	3.5	10.2	0.5
TB03613	Ti Base RP Abutment, RH 6mm GH 1mm Angular Engaged	6	1	4.5	3.5	9.2	0.5
TB03623	Ti Base RP Abutment, RH 6mm GH 2mm Angular Engaged	6	2	4.5	3.5	10.2	0.5
TB03633	Ti Base RP Abutment, RH 6mm GH 3mm Angular Engaged	6	3	4.5	3.5	11.2	0.5
TB03643	Ti Base RP Abutment, RH 6mm GH 4mm Angular Engaged	6	4	4.5	3.5	12.2	0.5
TB03813	Ti Base RP Abutment, RH 8mm GH 1mm Angular Engaged	8	1	4.5	3.5	11.2	0.5
TB03823	Ti Base RP Abutment, RH 8mm GH 2mm Angular Engaged	8	2	4.5	3.5	12.2	0.5
TB03833	Ti Base RP Abutment, RH 8mm GH 3mm Angular Engaged	8	3	4.5	3.5	13.2	0.5
TB03843	Ti Base RP Abutment, RH 8mm GH 4mm Angular Engaged	8	4	4.5	3.5	14.2	0.5

C-Type Ti Bases | For further product information and use please refer to IFU028

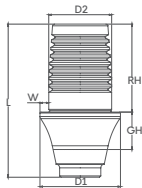
Engaged



RH GH D1 D2 L W Post

TB03414	C-Type Ti Base RP Abutment, GH 1mm Engaged	4.7	1	4.1	3.1	6.8	0.5	Large
TB03424	C-Type Ti Base RP Abutment, GH 2mm Engaged	4.7	2	4.1	3.1	7.3	0.5	Large
TB03434	C-Type Ti Base RP Abutment, GH 3mm Engaged	4.7	3	4.1	3.1	8.3	0.5	Large
TB03444	C-Type Ti Base RP Abutment, GH 4mm Engaged	4.7	4	4.1	3.1	9.3	0.5	Large

Non Engaged

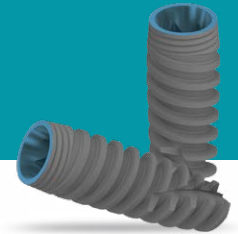


RH GH D1 D2 L W Post



TB03415	C-Type Ti Base RP Abutment, GH 1mm Non Engaged	4.7	1	4.1	3.1	6.8	0.5	Large
TB03425	C-Type Ti Base RP Abutment, GH 2mm Non Engaged	4.7	2	4.1	3.1	7.3	0.5	Large
TB03435	C-Type Ti Base RP Abutment, GH 3mm Non Engaged	4.7	3	4.1	3.1	8.3	0.5	Large
TB03445	C-Type Ti Base RP Abutment, GH 4mm Non Engaged	4.7	4	4.1	3.1	9.3	0.5	Large

CloseFit™ WP Ø 4.3 Ø 5.0



Wide Platform for wide / large ridges and spaces



Scan body | For Intra-oral and Desktop Scanner

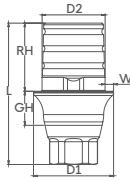
	WP CloseFit™ Scan Body 7mm	WP CloseFit™ Scan Body 10mm
		
Catalog No.	WP0088	WP0089
Retaining Screw Included	WP0001	WP0001
Material	Ti 6Al 4V ELI	Ti 6Al 4V ELI
Dimensions	H1: 7 mm W: 4.3 mm L: 6.7 mm	H1: 10 mm W: 4.5 mm L: 6.9 mm

Ti Blanks | For Medentika PreFace® Holders

	WP CloseFit™ Ti Pre Milled MDTK Abutment Blank Ø11.5mm		WP CloseFit™ Ti Pre Milled MDTK Abutment Blank Ø15.8mm
			
Catalog No.	WP1311	Catalog No.	WP1315
Retaining Screw Included	WP0001	Retaining Screw Included	WP0001
Material	Ti 6Al 4V ELI	Material	Ti 6Al 4V ELI
Dimensions	H1: 15.2 mm D2: Ø11.5 mm	Dimensions	H1: 15.2 mm D2: Ø15.8 mm
Intended Use	customized abutment for single unit	Intended Use	customized abutment for single unit

Ti Bases

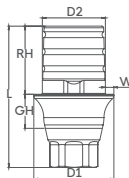
Engaged



RH GH D1 D2 L W

		RH	GH	D1	D2	L	W
TB05411	Ti Base WP Abutment, RH 4mm GH 1mm Engaged	4	1	4.7	3.7	7.3	0.5
TB05421	Ti Base WP Abutment, RH 4mm GH 2mm Engaged	4	2	4.7	3.7	8.3	0.5
TB05431	Ti Base WP Abutment, RH 4mm GH 3mm Engaged	4	3	4.7	3.7	9.3	0.5
TB05441	Ti Base WP Abutment, RH 4mm GH 4mm Engaged	4	4	4.7	3.7	10.3	0.5
TB05611	Ti Base WP Abutment, RH 6mm GH 1mm Engaged	6	1	4.7	3.7	9.3	0.5
TB05621	Ti Base WP Abutment, RH 6mm GH 2mm Engaged	6	2	4.7	3.7	10.3	0.5
TB05631	Ti Base WP Abutment, RH 6mm GH 3mm Engaged	6	3	4.7	3.7	11.3	0.5
TB05641	Ti Base WP Abutment, RH 6mm GH 4mm Engaged	6	4	4.7	3.7	12.3	0.5
TB05811	Ti Base WP Abutment, RH 8mm GH 1mm Engaged	8	1	4.7	3.7	11.3	0.5
TB05821	Ti Base WP Abutment, RH 8mm GH 2mm Engaged	8	2	4.7	3.7	12.3	0.5
TB05831	Ti Base WP Abutment, RH 8mm GH 3mm Engaged	8	3	4.7	3.7	13.3	0.5
TB05841	Ti Base WP Abutment, RH 8mm GH 4mm Engaged	8	4	4.7	3.7	14.3	0.5

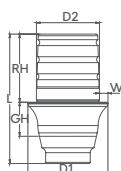
Engaged Wide



RH GH D1 D2 L W

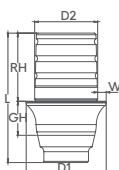
		RH	GH	D1	D2	L	W
TB05411W	Ti Base WP Abutment, RH 4mm GH 1mm Engaged, Wide	4	1	5.5	3.7	7.3	0.9
TB05421W	Ti Base WP Abutment, RH 4mm GH 2mm Engaged Wide	4	2	5.5	3.7	8.3	0.9
TB05431W	Ti Base WP Abutment, RH 4mm GH 3mm Engaged Wide	4	3	5.5	3.7	9.3	0.9
TB05441W	Ti Base WP Abutment, RH 4mm GH 4mm Engaged Wide	4	4	5.5	3.7	10.3	0.9
TB05611W	Ti Base WP Abutment, RH 6mm GH 1mm Engaged Wide	6	1	5.5	3.7	9.3	0.9
TB05621W	Ti Base WP Abutment, RH 6mm GH 2mm Engaged Wide	6	2	5.5	3.7	10.3	0.9
TB05631W	Ti Base WP Abutment, RH 6mm GH 3mm Engaged Wide	6	3	5.5	3.7	11.3	0.9
TB05641W	Ti Base WP Abutment, RH 6mm GH 4mm Engaged Wide	6	4	5.5	3.7	12.3	0.9
TB05811W	Ti Base WP Abutment, RH 8mm GH 1mm Engaged Wide	8	1	5.5	3.7	11.3	0.9
TB05821W	Ti Base WP Abutment, RH 8mm GH 2mm Engaged Wide	8	2	5.5	3.7	12.3	0.9
TB05831W	Ti Base WP Abutment, RH 8mm GH 3mm Engaged Wide	8	3	5.5	3.7	13.3	0.9
TB05841W	Ti Base WP Abutment, RH 8mm GH 4mm Engaged Wide	8	4	5.5	3.7	14.3	0.9

Non Engaged



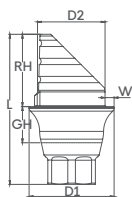
		RH	GH	D1	D2	L	W
TB05412	Ti Base WP Abutment, RH 4mm GH 1mm Non Engaged	4	1	4.7	3.7	6.6	0.5
TB05422	Ti Base WP Abutment, RH 4mm GH 2mm Non Engaged	4	2	4.7	3.7	7.6	0.5
TB05432	Ti Base WP Abutment, RH 4mm GH 3mm Non Engaged	4	3	4.7	3.7	8.6	0.5
TB05442	Ti Base WP Abutment, RH 4mm GH 4mm Non Engaged	4	4	4.7	3.7	9.6	0.5
TB05612	Ti Base WP Abutment, RH 6mm GH 1mm Non Engaged	6	1	4.7	3.7	8.6	0.5
TB05622	Ti Base WP Abutment, RH 6mm GH 2mm Non Engaged	6	2	4.7	3.7	9.6	0.5
TB05632	Ti Base WP Abutment, RH 6mm GH 3mm Non Engaged	6	3	4.7	3.7	10.6	0.5
TB05642	Ti Base WP Abutment, RH 6mm GH 4mm Non Engaged	6	4	4.7	3.7	11.6	0.5
TB05812	Ti Base WP Abutment, RH 8mm GH 1mm Non Engaged	8	1	4.7	3.7	10.6	0.5
TB05822	Ti Base WP Abutment, RH 8mm GH 2mm Non Engaged	8	2	4.7	3.7	11.6	0.5
TB05832	Ti Base WP Abutment, RH 8mm GH 3mm Non Engaged	8	3	4.7	3.7	12.6	0.5
TB05842	Ti Base WP Abutment, RH 8mm GH 4mm Non Engaged	8	4	4.7	3.7	13.6	0.5

Non Engaged Wide



		RH	GH	D1	D2	L	W
TB05412W	Ti Base WP Abutment, RH 4mm GH 1mm Non Engaged Wide	4	1	5.5	3.7	6.6	0.9
TB05422W	Ti Base WP Abutment, RH 4mm GH 2mm Non Engaged Wide	4	2	5.5	3.7	7.6	0.9
TB05432W	Ti Base WP Abutment, RH 4mm GH 3mm Non Engaged Wide	4	3	5.5	3.7	8.6	0.9
TB05442W	Ti Base WP Abutment, RH 4mm GH 4mm Non Engaged Wide	4	4	5.5	3.7	9.6	0.9
TB05612W	Ti Base WP Abutment, RH 6mm GH 1mm Non Engaged Wide	6	1	5.5	3.7	8.6	0.9
TB05622W	Ti Base WP Abutment, RH 6mm GH 2mm Non Engaged Wide	6	2	5.5	3.7	9.6	0.9
TB05632W	Ti Base WP Abutment, RH 6mm GH 3mm Non Engaged Wide	6	3	5.5	3.7	10.6	0.9
TB05642W	Ti Base WP Abutment, RH 6mm GH 4mm Non Engaged Wide	6	4	5.5	3.7	11.6	0.9
TB05812W	Ti Base WP Abutment, RH 8mm GH 1mm Non Engaged Wide	8	1	5.5	3.7	10.6	0.9
TB05822W	Ti Base WP Abutment, RH 8mm GH 2mm Non Engaged Wide	8	2	5.5	3.7	11.6	0.9
TB05832W	Ti Base WP Abutment, RH 8mm GH 3mm Non Engaged Wide	8	3	5.5	3.7	12.6	0.9
TB05842W	Ti Base WP Abutment, RH 8mm GH 4mm Non Engaged Wide	8	4	5.5	3.7	13.6	0.9

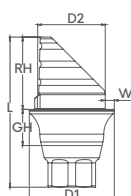
Angular Engaged



RH GH D1 D2 L W

TB05413	Ti Base WP Abutment, RH 4mm GH 1mm Angular Engaged	4	1	4.7	3.7	7.3	0.5
TB05423	Ti Base WP Abutment, RH 4mm GH 2mm Angular Engaged	4	2	4.7	3.7	8.3	0.5
TB05433	Ti Base WP Abutment, RH 4mm GH 3mm Angular Engaged	4	3	4.7	3.7	9.3	0.5
TB05443	Ti Base WP Abutment, RH 4mm GH 4mm Angular Engaged	4	4	4.7	3.7	10.3	0.5
TB05613	Ti Base WP Abutment, RH 6mm GH 1mm Angular Engaged	6	1	4.7	3.7	9.3	0.5
TB05623	Ti Base WP Abutment, RH 6mm GH 2mm Angular Engaged	6	2	4.7	3.7	10.3	0.5
TB05633	Ti Base WP Abutment, RH 6mm GH 3mm Angular Engaged	6	3	4.7	3.7	11.3	0.5
TB05643	Ti Base WP Abutment, RH 6mm GH 4mm Angular Engaged	6	4	4.7	3.7	12.3	0.5
TB05813	Ti Base WP Abutment, RH 8mm GH 1mm Angular Engaged	8	1	4.7	3.7	11.3	0.5
TB05823	Ti Base WP Abutment, RH 8mm GH 2mm Angular Engaged	8	2	4.7	3.7	12.3	0.5
TB05833	Ti Base WP Abutment, RH 8mm GH 3mm Angular Engaged	8	3	4.7	3.7	13.3	0.5
TB05843	Ti Base WP Abutment, RH 8mm GH 4mm Angular Engaged	8	4	4.7	3.7	14.3	0.5

Angular Engaged Wide

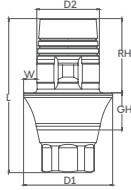


RH GH D1 D2 L W

TB05413W	Ti Base WP Abutment, RH 4mm GH 1mm Angular Engaged Wide	4	1	5.5	3.7	7.3	0.9
TB05423W	Ti Base WP Abutment, RH 4mm GH 2mm Angular Engaged Wide	4	2	5.5	3.7	8.3	0.9
TB05433W	Ti Base WP Abutment, RH 4mm GH 3mm Angular Engaged Wide	4	3	5.5	3.7	9.3	0.9
TB05443W	Ti Base WP Abutment, RH 4mm GH 4mm Angular Engaged Wide	4	4	5.5	3.7	10.3	0.9
TB05613W	Ti Base WP Abutment, RH 6mm GH 1mm Angular Engaged Wide	6	1	5.5	3.7	9.3	0.9
TB05623W	Ti Base WP Abutment, RH 6mm GH 2mm Angular Engaged Wide	6	2	5.5	3.7	10.3	0.9
TB05633W	Ti Base WP Abutment, RH 6mm GH 3mm Angular Engaged Wide	6	3	5.5	3.7	11.3	0.9
TB05643W	Ti Base WP Abutment, RH 6mm GH 4mm Angular Engaged Wide	6	4	5.5	3.7	12.3	0.9
TB05813W	Ti Base WP Abutment, RH 8mm GH 1mm Angular Engaged Wide	8	1	5.5	3.7	11.3	0.9
TB05823W	Ti Base WP Abutment, RH 8mm GH 2mm Angular Engaged Wide	8	2	5.5	3.7	12.3	0.9
TB05833W	Ti Base WP Abutment, RH 8mm GH 3mm Angular Engaged Wide	8	3	5.5	3.7	13.3	0.9
TB05843W	Ti Base WP Abutment, RH 8mm GH 4mm Angular Engaged Wide	8	4	5.5	3.7	14.3	0.9

C-Type Ti Bases | For further product information and use please refer to IFU028

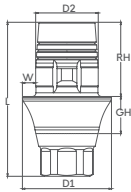
Engaged



RH GH D1 D2 L W Post

TB05414	C-Type Ti Base WP Abutment, GH 1mm Engaged	4	1	4.8	3.37	7.3	0.7	Large
TB05424	C-Type Ti Base WP Abutment, GH 2mm Engaged	4	2	4.8	3.37	8.3	0.7	Large
TB05434	C-Type Ti Base WP Abutment, GH 3mm Engaged	4	3	4.8	3.37	9.3	0.7	Large
TB05444	C-Type Ti Base WP Abutment, GH 4mm Engaged	4	4	4.8	3.37	10.3	0.7	Large

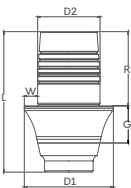
Engaged Wide



RH GH D1 D2 L W Post

TB05414W	C-Type Ti Base WP Abutment, GH 1mm Engaged Wide	4	1	6	3.37	6.6	1.3	Large
TB05424W	C-Type Ti Base WP Abutment, GH 2mm Engaged Wide	4	2	6	3.37	7.6	1.3	Large
TB05434W	C-Type Ti Base WP Abutment, GH 3mm Engaged Wide	4	3	6	3.37	8.6	1.3	Large
TB05444W	C-Type Ti Base WP Abutment, GH 4mm Engaged Wide	4	4	6	3.37	9.6	1.3	Large

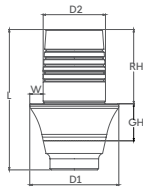
Non Engaged



RH GH D1 D2 L W Post

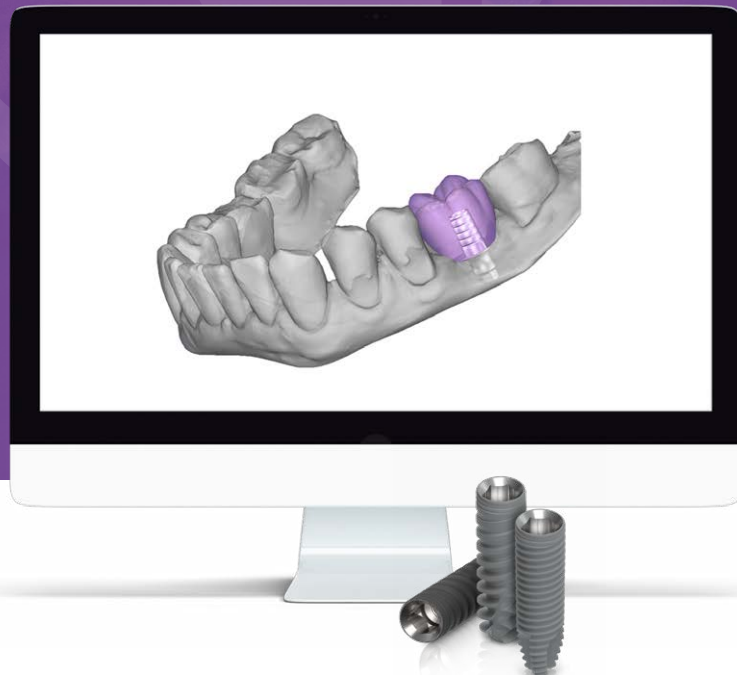
TB05415	C-Type Ti Base WP Abutment, GH 1mm Non Engaged	4	1	4.8	3.37	7.3	0.7	Large
TB05425	C-Type Ti Base WP Abutment, GH 2mm Non Engaged	4	2	4.8	3.37	8.3	0.7	Large
TB05435	C-Type Ti Base WP Abutment, GH 3mm Non Engaged	4	3	4.8	3.37	9.3	0.7	Large
TB05445	C-Type Ti Base WP Abutment, GH 4mm Non Engaged	4	4	4.8	3.37	10.3	0.7	Large

Non Engaged Wide



		RH	GH	D1	D2	L	W	Post
TB05415W	C-Type Ti Base WP Abutment, GH 1mm Non Engaged Wide	4	1	6	3.37	6.6	1.3	Large
TB05425W	C-Type Ti Base WP Abutment, GH 2mm Non Engaged Wide	4	2	6	3.37	7.6	1.3	Large
TB05435W	C-Type Ti Base WP Abutment, GH 3mm Non Engaged Wide	4	3	6	3.37	8.6	1.3	Large
TB05445W	C-Type Ti Base WP Abutment, GH 4mm Non Engaged Wide	4	4	6	3.37	9.6	1.3	Large

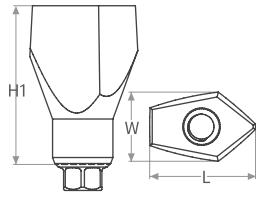
Internal Hex



Ø 3.3 Ø 3.5 Ø 3.75 Ø 4.2 Ø 5.0 Ø 6.0

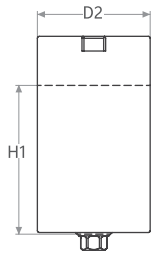
RS - Touareg S™ | Touareg OS™ | Swell™ | Triple™

Scan body | For Intra-oral and Desktop Scanner



	RS Scan Body 7mm	RS Scan Body 10mm
Catalog No.	RS0088	RS0089
Retaining Screw Included	RS3400	RS3425
Material	Ti 6Al 4V ELI	Ti 6Al 4V ELI
Dimensions	H1: 7 mm W: 4.3 mm L: 6.7 mm	H1: 10 mm W: 4.4 mm L: 6.8 mm

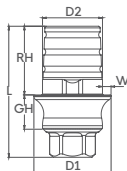
Ti Blanks | For Medentika PreFace® Holders



	RS Ti Pre Milled MDTK Abutment Blank Ø 11.5mm		RS Ti Pre Milled MDTK Abutment Blank Ø 15.8mm
Catalog No.	RS1411	Catalog No.	RS1415
Retaining Screw Included	RS3402	Retaining Screw Included	RS3402
Material	Ti 6Al 4V ELI	Material	Ti 6Al 4V ELI
Dimensions	H1: 15.2 mm D2: Ø11.5 mm	Dimensions	H1: 15.2 mm D2: Ø15.8 mm
Intended Use	customized abutment for single unit	Intended Use	customized abutment for single unit

Ti Bases

Engaged

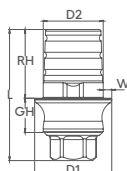


RH GH D1 D2 L W

TB04411	Ti Base RS Abutment, RH 4mm GH 1mm Engaged	4	1	4.5	3.5	6.65	0.5
TB04421	Ti Base RS Abutment, RH 4mm GH 2mm Engaged	4	2	4.5	3.5	7.65	0.5
TB04431	Ti Base RS Abutment, RH 4mm GH 3mm Engaged	4	3	4.5	3.5	8.65	0.5
TB04441	Ti Base RS Abutment, RH 4mm GH 4mm Engaged	4	4	4.5	3.5	9.65	0.5
TB04611	Ti Base RS Abutment, RH 6mm GH 1mm Engaged	6	1	4.5	3.5	8.65	0.5

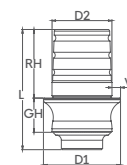
		RH	GH	D1	D2	L	W
TB04621	Ti Base RS Abutment, RH 6mm GH 2mm Engaged	6	2	4.5	3.5	9.65	0.5
TB04631	Ti Base RS Abutment, RH 6mm GH 3mm Engaged	6	3	4.5	3.5	10.65	0.5
TB04641	Ti Base RS Abutment, RH 6mm GH 4mm Engaged	6	4	4.5	3.5	11.65	0.5
TB04811	Ti Base RS Abutment, RH 8mm GH 1mm Engaged	8	1	4.5	3.5	10.65	0.5
TB04821	Ti Base RS Abutment, RH 8mm GH 2mm Engaged	8	2	4.5	3.5	11.65	0.5
TB04831	Ti Base RS Abutment, RH 8mm GH 3mm Engaged	8	3	4.5	3.5	12.65	0.5
TB04841	Ti Base RS Abutment, RH 8mm GH 4mm Engaged	8	4	4.5	3.5	13.65	0.5

Engaged Wide



		RH	GH	D1	D2	L	W
TB04411W	Ti Base RS Abutment, RH 4mm GH 1mm Engaged Wide	4	1	5.5	3.5	6.65	1
TB04421W	Ti Base RS Abutment, RH 4mm GH 2mm Engaged Wide	4	2	5.5	3.5	7.65	1
TB04431W	Ti Base RS Abutment, RH 4mm GH 3mm Engaged Wide	4	3	5.5	3.5	8.65	1
TB04441W	Ti Base RS Abutment, RH 4mm GH 4mm Engaged Wide	4	4	5.5	3.5	9.65	1
TB04611W	Ti Base RS Abutment, RH 6mm GH 1mm Engaged Wide	6	1	5.5	3.5	8.65	1
TB04621W	Ti Base RS Abutment, RH 6mm GH 2mm Engaged Wide	6	2	5.5	3.5	9.65	1
TB04631W	Ti Base RS Abutment, RH 6mm GH 3mm Engaged Wide	6	3	5.5	3.5	10.65	1
TB04641W	Ti Base RS Abutment, RH 6mm GH 4mm Engaged Wide	6	4	5.5	3.5	11.65	1
TB04811W	Ti Base RS Abutment, RH 8mm GH 1mm Engaged Wide	8	1	5.5	3.5	10.65	1
TB04821W	Ti Base RS Abutment, RH 8mm GH 2mm Engaged Wide	8	2	5.5	3.5	11.65	1
TB04831W	Ti Base RS Abutment, RH 8mm GH 3mm Engaged Wide	8	3	5.5	3.5	12.65	1
TB04841W	Ti Base RS Abutment, RH 8mm GH 4mm Engaged Wide	8	4	5.5	3.5	13.65	1

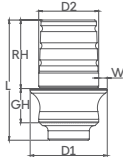
Non Engaged



		RH	GH	D1	D2	L	W
TB04412	Ti Base RS Abutment, RH 4mm GH 1mm Non Engaged	4	1	4.5	3.5	6	0.5
TB04422	Ti Base RS Abutment, RH 4mm GH 2mm Non Engaged	4	2	4.5	3.5	7	0.5
TB04432	Ti Base RS Abutment, RH 4mm GH 3mm Non Engaged	4	3	4.5	3.5	8	0.5
TB04442	Ti Base RS Abutment, RH 4mm GH 4mm Non Engaged	4	4	4.5	3.5	9	0.5
TB04612	Ti Base RS Abutment, RH 6mm GH 1mm Non Engaged	6	1	4.5	3.5	8	0.5
TB04622	Ti Base RS Abutment, RH 6mm GH 2mm Non Engaged	6	2	4.5	3.5	9	0.5
TB04632	Ti Base RS Abutment, RH 6mm GH 3mm Non Engaged	6	3	4.5	3.5	10	0.5
TB04642	Ti Base RS Abutment, RH 6mm GH 4mm Non Engaged	6	4	4.5	3.5	11	0.5
TB04812	Ti Base RS Abutment, RH 8mm GH 1mm Non Engaged	8	1	4.5	3.5	10	0.5
TB04822	Ti Base RS Abutment, RH 8mm GH 2mm Non Engaged	8	2	4.5	3.5	11	0.5

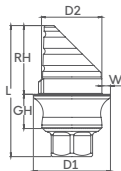
		RH	GH	D2	D1	L	W
TB04832	Ti Base RS Abutment, RH 8mm GH 3mm Non Engaged	8	3	4.5	3.5	12	0.5
TB04842	Ti Base RS Abutment, RH 8mm GH 4mm Non Engaged	8	4	4.5	3.5	13	0.5

Non Engaged Wide



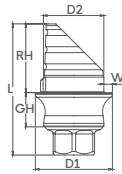
		RH	GH	D1	D2	L	W
TB04412W	Ti Base RS Abutment, RH 4mm GH 1mm Non Engaged Wide	4	1	5.5	3.5	6	1
TB04422W	Ti Base RS Abutment, RH 4mm GH 2mm Non Engaged Wide	4	2	5.5	3.5	7	1
TB04432W	Ti Base RS Abutment, RH 4mm GH 3mm Non Engaged Wide	4	3	5.5	3.5	8	1
TB04442W	Ti Base RS Abutment, RH 4mm GH 4mm Non Engaged Wide	4	4	5.5	3.5	9	1
TB04612W	Ti Base RS Abutment, RH 6mm GH 1mm Non Engaged Wide	6	1	5.5	3.5	8	1
TB04622W	Ti Base RS Abutment, RH 6mm GH 2mm Non Engaged Wide	6	2	5.5	3.5	9	1
TB04632W	Ti Base RS Abutment, RH 6mm GH 3mm Non Engaged Wide	6	3	5.5	3.5	10	1
TB04642W	Ti Base RS Abutment, RH 6mm GH 4mm Non Engaged Wide	6	4	5.5	3.5	11	1
TB04812W	Ti Base RS Abutment, RH 8mm GH 1mm Non Engaged Wide	8	1	5.5	3.5	10	1
TB04822W	Ti Base RS Abutment, RH 8mm GH 2mm Non Engaged Wide	8	2	5.5	3.5	11	1
TB04832W	Ti Base RS Abutment, RH 8mm GH 3mm Non Engaged Wide	8	3	5.5	3.5	12	1
TB04842W	Ti Base RS Abutment, RH 8mm GH 4mm Non Engaged Wide	8	4	5.5	3.5	13	1

Angular Engaged



		RH	GH	D1	D2	L	W
TB04413	Ti Base RS Abutment, RH 4mm GH 1mm Angular Engaged	4	1	4.5	3.5	6.65	0.5
TB04423	Ti Base RS Abutment, RH 4mm GH 2mm Angular Engaged	4	2	4.5	3.5	7.65	0.5
TB04433	Ti Base RS Abutment, RH 4mm GH 3mm Angular Engaged	4	3	4.5	3.5	8.65	0.5
TB04443	Ti Base RS Abutment, RH 4mm GH 4mm Angular Engaged	4	4	4.5	3.5	9.65	0.5
TB04613	Ti Base RS Abutment, RH 6mm GH 1mm Angular Engaged	6	1	4.5	3.5	8.65	0.5
TB04623	Ti Base RS Abutment, RH 6mm GH 2mm Angular Engaged	6	2	4.5	3.5	9.65	0.5
TB04633	Ti Base RS Abutment, RH 6mm GH 3mm Angular Engaged	6	3	4.5	3.5	10.65	0.5
TB04643	Ti Base RS Abutment, RH 6mm GH 4mm Angular Engaged	6	4	4.5	3.5	11.65	0.5
TB04813	Ti Base RS Abutment, RH 8mm GH 1mm Angular Engaged	8	1	4.5	3.5	10.65	0.5
TB04823	Ti Base RS Abutment, RH 8mm GH 2mm Angular Engaged	8	2	4.5	3.5	11.65	0.5
TB04833	Ti Base RS Abutment, RH 8mm GH 3mm Angular Engaged	8	3	4.5	3.5	12.65	0.5
TB04843	Ti Base RS Abutment, RH 8mm GH 4mm Angular Engaged	8	4	4.5	3.5	13.65	0.5

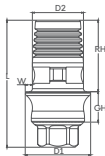
Angular Engaged Wide



		RH	GH	D1	D2	L	A	W
TB04413W	Ti Base RS Abutment, RH 4mm GH 1mm Angular Engaged Wide	4	1	5.5	3.5	6.65	45	1
TB04423W	Ti Base RS Abutment, RH 4mm GH 2mm Angular Engaged Wide	4	2	5.5	3.5	7.65	45	1
TB04433W	Ti Base RS Abutment, RH 4mm GH 3mm Angular Engaged Wide	4	3	5.5	3.5	8.65	45	1
TB04443W	Ti Base RS Abutment, RH 4mm GH 4mm Angular Engaged Wide	4	4	5.5	3.5	9.65	45	1
TB04613W	Ti Base RS Abutment, RH 6mm GH 1mm Angular Engaged Wide	6	1	5.5	3.5	8.65	35	1
TB04623W	Ti Base RS Abutment, RH 6mm GH 2mm Angular Engaged Wide	6	2	5.5	3.5	9.65	35	1
TB04633W	Ti Base RS Abutment, RH 6mm GH 3mm Angular Engaged Wide	6	3	5.5	3.5	10.65	35	1
TB04643W	Ti Base RS Abutment, RH 6mm GH 4mm Angular Engaged Wide	6	4	5.5	3.5	11.65	35	1
TB04813W	Ti Base RS Abutment, RH 8mm GH 1mm Angular Engaged Wide	8	1	5.5	3.5	10.65	25	1
TB04823W	Ti Base RS Abutment, RH 8mm GH 2mm Angular Engaged Wide	8	2	5.5	3.5	11.65	25	1
TB04833W	Ti Base RS Abutment, RH 8mm GH 3mm Angular Engaged Wide	8	3	5.5	3.5	12.65	25	1
TB04843W	Ti Base RS Abutment, RH 8mm GH 4mm Angular Engaged Wide	8	4	5.5	3.5	13.65	25	1

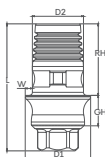
C-Type Ti Bases | For further product information and use please refer to IFU028

Engaged



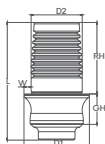
		RH	GH	D1	D2	L	W	Post
TB04414	C-Type Ti Base RS Abutment, GH 1mm Engaged	4.7	1	4.3	3.36	7.35	0.5	Large
TB04424	C-Type Ti Base RS Abutment, GH 2mm Engaged	4.7	2	4.3	3.36	8.35	0.5	Large
TB04434	C-Type Ti Base RS Abutment, GH 3mm Engaged	4.7	3	4.3	3.36	9.35	0.5	Large
TB04444	C-Type Ti Base RS Abutment, GH 4mm Engaged	4.7	4	4.3	3.36	10.35	0.5	Large

Engaged Wide



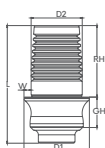
		RH	GH	D1	D2	L	W	Post
TB04414W	C-Type Ti Base RS Abutment, GH 1mm Engaged Wide	4.7	1	6	3.36	7.35	1.3	Large
TB04424W	C-Type Ti Base RS Abutment, GH 2mm Engaged Wide	4.7	2	6	3.36	8.35	1.3	Large
TB04434W	C-Type Ti Base RS Abutment, GH 3mm Engaged Wide	4.7	3	6	3.36	9.35	1.3	Large
TB04444W	C-Type Ti Base RS Abutment, GH 4mm Engaged Wide	4.7	4	6	3.36	10.35	1.3	Large

Non Engaged



		RH	GH	D1	D2	L	W	Post
TB04415	C-Type Ti Base RS Abutment, GH 1mm Non Engaged	4.7	1	4.3	3.36	6.7	0.5	Large
TB04425	C-Type Ti Base RS Abutment, GH 2mm Non Engaged	4.7	2	4.3	3.36	7.7	0.5	Large
TB04435	C-Type Ti Base RS Abutment, GH 3mm Non Engaged	4.7	3	4.3	3.36	8.7	0.5	Large
TB04445	C-Type Ti Base RS Abutment, GH 4mm Non Engaged	4.7	4	4.3	3.36	9.7	0.5	Large

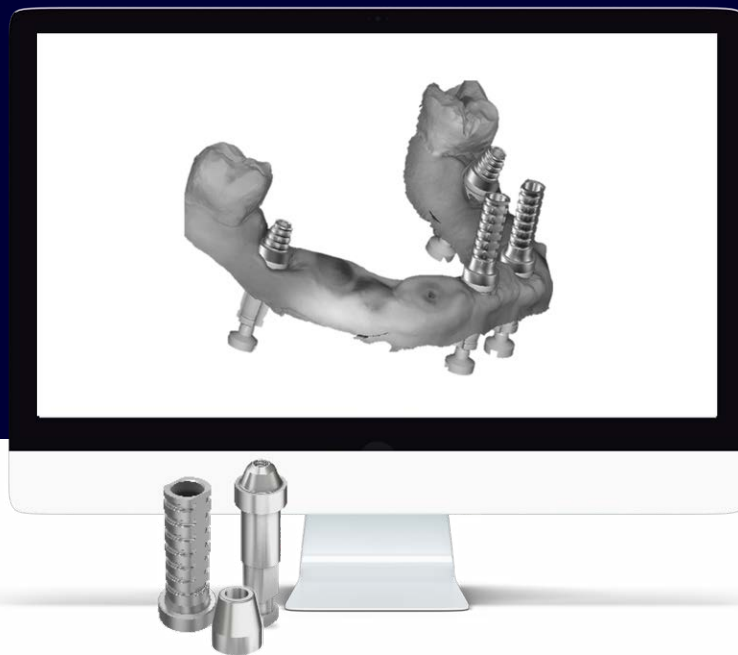
Non Engaged Wide



		RH	GH	D1	D2	L	W	Post
TB04415W	C-Type Ti Base RS Abutment, GH 1mm Non Engaged Wide	4.7	1	6	3.36	6.7	1.3	Large
TB04425W	C-Type Ti Base RS Abutment, GH 2mm Non Engaged Wide	4.7	2	6	3.36	7.7	1.3	Large
TB04435W	C-Type Ti Base RS Abutment, GH 3mm Non Engaged Wide	4.7	3	6	3.36	8.7	1.3	Large
TB04445W	C-Type Ti Base RS Abutment, GH 4mm Non Engaged Wide	4.7	4	6	3.36	9.7	1.3	Large

TMA

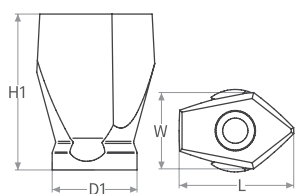
Multi Unit



For Screw Retained Restoration

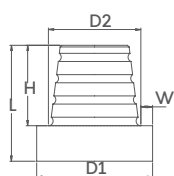
Scan body

| For Intra-oral and Desktop Scanner

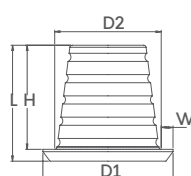


	TMA Scan Body 6mm	TMA Scan Body 9mm
Catalog No.	TM0006	TM0009
Retaining Screw Included	TM0001	TM0001
Material	TI 6Al 4V ELI	TI 6Al 4V ELI
Dimensions	H1: 6 mm D1: Ø4.9 mm W: 4.3 mm L: 6.7 mm	H1: 9 mm D1: Ø4.9 mm W: 4.5 mm L: 6.8 mm

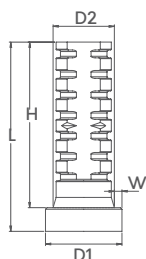
Cementing Cone & Temporary Cylinder



	TMA Cementing Cone
Catalog No.	TM0010
Retaining Screw Included	TM0001
Material	TI 6Al 4V ELI
Dimensions	L: 4.9 mm H: 3.4 mm D1: Ø4.9 mm D2: Ø3.8 mm W: 0.5 mm



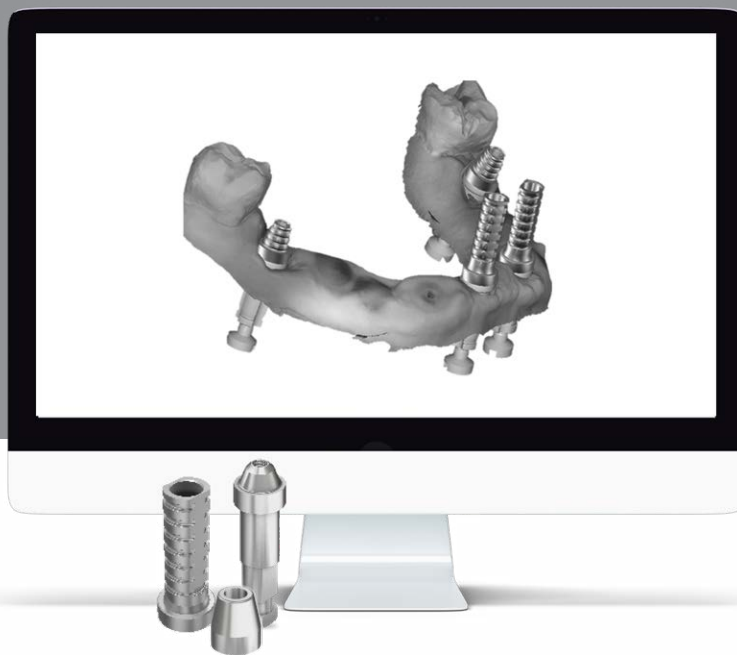
	TMA Cementing Cone, low profile
Catalog No.	TM0011
Retaining Screw Included	TM0001
Material	TI 6Al 4V ELI
Dimensions	L: 4.9 mm H: 4.4 mm D1: Ø5.5 mm D2: Ø4.5 mm W: 0.5 mm



	Titanium Temporary Cylinder
Catalog No.	RS4900
Retaining Screw Included	RS3404
Material	TI 6Al 4V ELI
Dimensions	L: 12 mm H: 10.5 mm D1: Ø4.9 mm D2: Ø3.6 mm W: 0.5 mm





Accessories

Screws | Tools | Analogs | Replica





For Screw Retained Restoration

Screws





CloseFit™ Conical Connection	UNP CloseFit™ Abutment Screw	NP CloseFit™ Abutment Screw	RP CloseFit™ Abutment Screw	WP CloseFit™ Abutment Screw
				
Catalog No.		NP0001	RP0001	WP0001
Material		Ti 6Al 4V ELI	Ti 6Al 4V ELI	Ti 6Al 4V ELI
Intended use		For NP Scan Body, Ti Bases and Blanks	For RP Scan Body, Ti Bases and Blanks	For WP Scan Body, Ti Bases and Blanks



Touareg™ RS Internal Hex	RS Prosthetic Screw	RS Screw For Closed Tray Transfer	RS Short Prosthetic Screw
			
Catalog No.	RS3400	RS3425	RS3402
Material	Ti 6Al 4V ELI	Ti 6Al 4V ELI	Ti 6Al 4V ELI
Intended use	For RS Scan Body 7mm	For RS Scan Body 10mm	For RS Ti Bases and Ti Blanks


TMA - Multi Unit

	TMA Scan Body Screw	TMA Prosthetic Screw
		
Catalog No.	TM0001	RS3404
Material	Ti 6Al 4V ELI	Ti 6Al 4V ELI
Intended use	For TMA-MU Scan Body and Cementing Cone	For TMA-MU Temporary cylinder and TMA direct option



Analogs & Replica

Digital Analog	UNP Digital Analog	NP Digital Analog	RP Digital Analog	WP Digital Analog
				
Catalog No.	UNP1000	NP1000	RP1000	WP1000
Material	TI 6Al 4V ELI	TI 6Al 4V ELI	TI 6Al 4V ELI	TI 6Al 4V ELI

Digital Analog for RS & TMA- MU	RS Digital Analog	TMA Abutment Replica
		
Catalog No.	RS1000	RS1001
Material	TI 6Al 4V ELI	TI 6Al 4V ELI

Retaining Screw

RS1002
TI 6Al 4V ELI
Compatible with TMA-MU, CloseFit™ & RS Platforms

Tools*

	Star Hand driver- Short	1.27 Hex Hand Driver- Short
		
Catalog No.	RP0064	RS6095
	Star Hand driver- Long	1.27 Hex Hand Driver- Medium
Catalog No.	RP0004	RS6094
Intended use	Compatible with TMA-MU and CloseFit™ Platforms: UNP, NP, RP, WP	Compatible with Touareg™ RS System: Touareg-S™, Touareg-OS™, Swell™, Triple™

*You may also use any of the following: RS6097 | RP0065 | RS6080 | RP0005 | RS6082 | RP0018 | RS9030 | RP0019 | RS9035

CAD-CAM libraries allow for design and manufacture of custom made restoration products that fit Adin's implants using CAD-CAM Technology.

Adin's CAD-CAM restoration parts have been added to the Exocad, 3shape, Dental Wings, and are available for downloading on our website at: <https://www.adin-implants.com/product/cadcam/>

Adin may update its supported systems software list from time to time. The updated list will be available on Adin's website address mentioned above.

Features

- The use of CAD libraries for Temp restoration saves time and is design to be more accurate for both the doctor and the laboratory
- Titanium Temporary Cylinder (RS4900) was added to the 3D libraries in order to make the connection between the TMA and the temporary restoration
- Two different lengths of restoration were added to the libraries: Half High cylinder/ Full High cylinder
- Different options for cement were added to the libraries: 0.25 / 0.5 Cement Gap

The libraries contain

- Two Scan Body height variations fit all platforms: RS, WP, RP, NP, UNP and TMA-MU Platforms
- Ti bases: Engaged, Non-Engaged and Angular Engaged
- TMA Cementing cone and Temporary TMA restoration
- Library installation instructions
- Library files are available for downloading using the link above and are also accessible in the various software libraries.
- After downloading our library, save the library files on your computer and follow your CAD-CAM supplier loading and installation instructions in order to load and install our libraries onto your system.



About Adin

Every business starts with a vision.

Ours is simple: We want to create the best possible dental implant solutions that offer uncompromising quality at an affordable price. It's our people that help our business thrive and grow. That's why we place so much importance on building strong personal relationships that enable us to meet our doctors and distributors' needs. Understanding that their success is our success, we're focused on providing professional, high quality and affordable solutions and exceptional service that help them grow.