



Strong like rock

G-ænial®  
Universal  
Injectable  
from GC

High-strength  
restorative composite



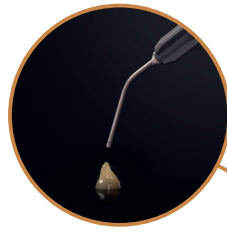
G-ænial® Universal Injectable from GC

# Strong like rock

For all cavity classes  
No covering layer required



252% Al radiopacity for perfect follow-up



Perfectly designed: no uncontrolled material flow-out and easy separation from the tip



Bendable tips for easy access to any cavity

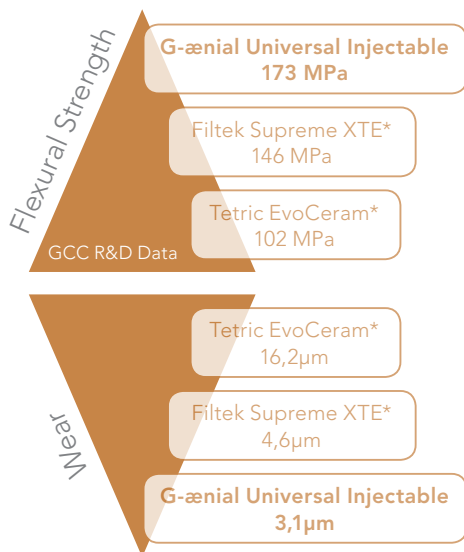


No slumping: everything stays where you place it



Easy extrusion for maximum comfort

Dr Ahmed Al-Jaff, Iraq



Ultra-fine Barium fillers (150 nm) & high filler load

Full-coverage Silane Coating (FSC) Technology improving the dispersion & adhesion of the fillers in the matrix

Exceptional properties  
No stickiness  
Low extrusion pressure  
High radiopacity

\* Not trademarks of GC

# Start injecting!



## Class II restoration



Initial situation showing interproximal caries



Removal of the old restoration & caries removal



Undercuts can easily be reached thanks to the bendable tips



Building the proximal wall using the enamel shade JE



Removal of the sectional matrix after building the wall



A Class I procedure can now be followed; the dentin layer is created with the A4 shade



Placement of the final enamel layer with the JE shade



Final situation after finishing and polishing of the margins

Dr Javier Tapia Guadix, Spain

## Class III restorations



Initial Class III cavities



Injecting G-ænial Universal Injectable (A2)



Immediate post-operative result



Recall situation showing perfect integration

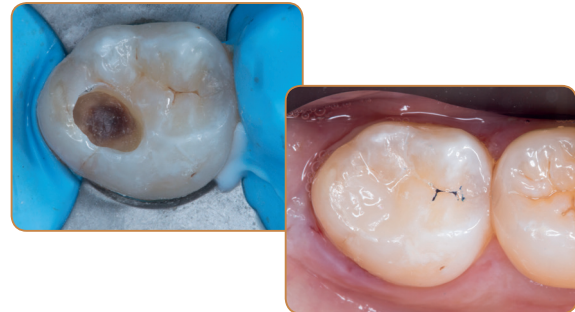
Dr Ahmed Al-Jaff, Iraq

# G-ænial® Universal Injectable from GC

## Enjoy superb aesthetics & long-lasting gloss!



Dr Florian Klumpp, Germany



Dr Ali Salehi, France

	Standard shades											Inside shades			Outside shades	
	XBW	BW	A1	A2	A3	A3.5	A4	B1	B2	CV	CVD	AO1	AO2	AO3	JE	AE
Syringe 1mL (1,7g)	901471	901472	901473	901474	901475	901476	901477	901478	901479	901480	901481	901482	901483	901484	901485	901486



901503 - Dispensing Tip  
Long Needle (x30)



### Also discover GC's universal bonding G-Premio BOND:

- 009030 – G-Premio BOND Kit 5mL
- 009036 – G-Premio BOND Bottle Refill 5mL
- 009032 – G-Premio BOND 3-Bottle Refill, 3x5mL
- 009034 – G-Premio BOND unitdoses, 50 pieces

**GC EUROPE N.V.**  
 Head Office  
 Researchpark  
 Haasrode-Leuven 1240  
 Interleuvenlaan 33  
 B-3001 Leuven  
 Tel. +32.16.74.10.00  
 Fax. +32.16.40.48.32  
 info.gce@gc.dental  
 http://www.gceurope.com

**GC UNITED KINGDOM Ltd.**  
 Coopers Court  
 Newport Pagnell  
 UK-Bucks. MK16 8JS  
 Tel. +44.1908.218.999  
 Fax. +44.1908.218.900  
 info.uk@gc.dental  
 http://uk.gceurope.com

