



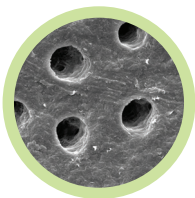
Rapid tooth remineralisation with increased acid resistance and reduced sensitivity by blocking exposed dentine tubules.

Introducing BioMin^F

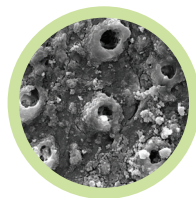
BioMin^F bioactive glass (calcium fluoro-phospho-silicate), based on patents licensed from Queen Mary University London and Imperial College, London, has been developed to treat dentine sensitivity problems experienced by people eating or drinking cold foodstuffs, promote remineralisation and prevent tooth decay.

In 2013 BioMin's technology received the Worshipful Company Armourers and Brasiers' Venture Prize for innovation which resulted in the establishment of BioMin Technologies Ltd in the following year.

When included in toothpaste formulations, BioMin^F adheres to tooth surfaces and slowly dissolves to release calcium, phosphate and fluoride ions over an 8-12 hour period to form acid resistant fluorapatite (tooth mineral). This is much more effective than conventional toothpastes where the active ingredients, including soluble fluoride, are washed away and become ineffective less than two hours after brushing. At the same time BioMin^F helps reduce tooth decay and promotes healthy tooth structure.



Electron Micrograph Showing Open Dentine Tubules



BioMin^F Forming Apatite Inside Dentine Tubules

A Fluoride free version of BioMin is also under development where the level of Fluoride in the water supply to develop more acid resistant fluorapatite tooth surfaces is felt to be sufficient or for those who are opposed to the inclusion of Fluoride in toothpaste.

The technology behind BioMin is not exclusively designed for toothpastes and can also be incorporated in other professional dental products such as prophylaxis pastes, varnishes and restorative materials in the dental practice.





Executive Team

BioMin Technologies Ltd. has a strong and experienced team with a proven track record for bringing timely and innovative technology to market.



Dr Graeme Brown

Chairman

Director of QMI with extensive knowledge of University technology transfer.



Mr Richard Whatley

Chief Executive Officer

30 years international senior management experience with leading companies in the dental industry.



Mr Julian Beare

Non Executive Director

Representative of Armourers and Brasiers Company with international experience advising start-ups and smaller companies.



Dr David Gillam

Clinical Advisor and Non Executive Director

QMUL Senior Lecturer with experience as clinical consultant to companies such as Block Drug and GSK Oral Healthcare.



Prof Robert Hill

Chief Scientific Officer & Founder Director

QMUL Director of Dental Research with 30 years experience developing dental and medical innovations.

BioMin Technologies Ltd

Room E204, Queens Building,
Queen Mary University of London,
Mile End Road, London, E1 4NS

www.biomin.co.uk | info@biomin.co.uk

