

Icon smooth surface

The effective approach to treating white spots.

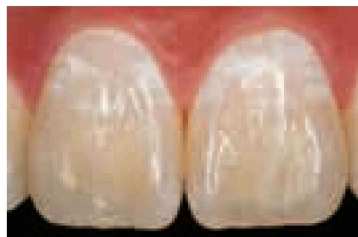


Icon vestibular masks white spots on smooth surfaces. How does this infiltration method work?

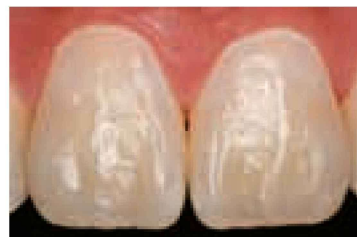
Air and water entrapments caused by the caries process have a lower light refraction index than healthy tissue. That leads to unesthetic discolorations called white spots. Icon-Infiltrant, which penetrates deep into the porous tooth tissue, has a light refraction index similar to that of healthy enamel. The infiltrated lesion thus approximates the appearance of surrounding healthy enamel.

Another benefit: As well as cariogenic white spots, it can also be used to successfully treat fluorosis as well as idiopathic or trauma-related spots.

Icon smooth surface: Esthetic results in just one treatment session.



White spots on the anterior teeth.



After treatment with Icon smooth surface.



Indications: Micro-invasive treatment of non-cavitated carious enamel lesions, esthetic treatment of mild to moderate fluorosis with an intact surface, esthetic treatment of idiopathic or trauma-related spots

Good reasons

- Esthetic treatment of white spots
- Restoration of the authentic tooth shade
- Preservation of healthy tooth structure
- Gentle, painless approach
- Application process in only one sitting



**Now available:
Icon-Etch Refill**

Starter Pack

- 2 Treatment units, each including:
 - 1 Syringe @ 0.45 ml Icon-Etch
 - 1 Syringe @ 0.45 ml Icon-Dry
 - 1 Syringe @ 0.45 ml Icon-Infiltrant
 - 6 Vestibular-Tips
 - 1 Luer-Lock-Tip
- REF 220343

Economy Pack

- 7 Treatment units, each including:
 - 1 Syringe @ 0.45 ml Icon-Etch
 - 1 Syringe @ 0.45 ml Icon-Dry
 - 1 Syringe @ 0.45 ml Icon-Infiltrant
 - 6 Vestibular-Tips
 - 1 Luer-Lock-Tip
- REF 220238

Refill

- Icon-Etch
 - 3 Syringes @ 0.45 ml Icon-Etch
 - 15 Vestibular-Tips
- REF 220384